

13.07.
71-A11
Asiatic Immigrant

The Directory
of
Japanese Students
in
North America



ORIENT

IN ONLY 10 DAYS

GO EMPRESS . . . via the Direct Express Route on the *Empress of Asia* or *Empress of Russia*. Reach Yokohama in 10 days.

Or go via Honolulu on the *Empress of Japan* or the *Empress of Canada* . . . Yokohama in 13 days.

Travel in "Empress" style. Large cabins and plenty of deck space. Splendid service at all times . . . and excellent food.



FREQUENT SAILINGS from Vancouver (trains to ship-side) and Victoria. Orient fares include passage to and from Seattle. California sailings connect with "Emperesses" at Honolulu. Ports-of-call: Yokohama, Kobe, Nagasaki, Shanghai, Hong Kong, and Manila.

REDUCED ROUND-TRIP FARES. Luxurious First Class; excellent Tourist Class; and low-cost, comfortable Third Class.

Also, low-cost Independent World Tours.

BOOKLETS, information, and reservations from E. T. Stebbing, 344 Madison Ave., New York.

Canadian Pacific

The Directory
of
Japanese Students
in
North America
1934-1935



The Japanese Students' Christian Association
in North America

347 Madison Avenue, New York City
Telephone VAnderson 3-1200



Cameras and Films

Silverware

Watches—American and Euro-
pean Makes

Jewels and Precious Stones

Phonographs and Records

Radios of All Kinds

Typewriters

Fountain Pens

AOYAGI CO.

147-57 WEST 42nd STREET

NEW YORK CITY

Telephone BRyant 9-4374—4037

CONTENTS

	PAGE
I. JAPANESE STUDENT'S CHRISTIAN ASSOCIATION IN NORTH AMERICA:	
History	6
Objects	6
Practical Aims	7
Organization	7
Membership	8
Branches in Japan.....	8
Program of Service.....	9
Practical Services	11
Friendly Relations Committee.....	13
II. OFFICERS OF THE J. S. C. A.:	
Central Executive Board.....	15
Central Advisory Committee.....	15
Central Office	15
Local Chapters	15
Branches in Japan.....	16
III. EMBASSIES AND CONSULATES:	
The United States of America....	17
Canada	17
Miscellaneous Addresses	18
IV. KEY TO DIRECTORY.....	19
V. ABBREVIATIONS	19
VI. JAPANESE ON THE FACULTY OF AMERICAN INSTITUTIONS	21
VII. DIRECTORY:	
Japanese Students in Canada.....	23
Japanese Students in the United States	25
VIII. INDEX TO ADVERTISERS.....	73
IX. GEOGRAPHICAL INDEX,	74
X. INDEX TO INSTITUTIONS.....	75
XI. INDEX TO NAMES.....	77
XII. SUMMARY	90



INTERNATIONAL
HOUSE

NEW YORK

Chicago

Berkeley, Cal.

Open to Students
of Every Country
Foreign & American
Men & Women

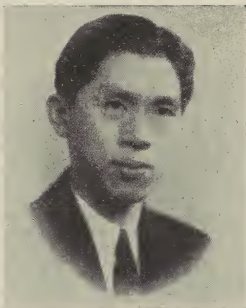
Modern—Comfortable—Reasonable

For full particulars write

500 Riverside Drive, New York, N. Y.

1414 E. 59th Street, Chicago, Ill.

Piedmont Avenue, Berkeley, Cal.



FELLOW STUDENTS:

I am exceedingly happy to greet you all in this little booklet. It is my sincere desire that this directory will serve in introducing each of us and create true fellowship and genuine friendship among us.

More than 85 years ago, Manjiro Nagahama, who is known as the first Japanese student to enter the United States, registered in a high school in New Bedford, Mass. In 1853, he played a most important role as an interpreter in the negotiations of the treaty between Commodore Perry and the Tokugawa government. Indeed, epoch-making history between these countries on the Pacific was made through the help of this lone student.

Today we have 1,632 of you registered, and the ever increasing problems in a vastly complicated situation between the two countries are placed on your shoulders, such as Nagahama assumed some 85 years ago. I am now looking to you as the ones who will follow the footsteps of Nagahama in Pacific relations over the Pacific.

MASATANE MITANI,
General Secretary.

THE JAPANESE STUDENTS' CHRISTIAN ASSOCIATION IN NORTH AMERICA

History

THE Japanese Students' Christian Association in North America, the dream of many a Japanese student in the past, was proposed at a meeting of Japanese delegates to the Student Volunteer Convention at Indianapolis in January, 1924. In the following June the national organization became a reality, and since then has made a record growth. The appointment of the Committee of Twenty at Indianapolis, the nation-wide discussion of the proposed plan, the organization of twenty-one Local Chapters all over the country from the Atlantic to the Pacific, the drafting and adoption of the national constitution, and the election of the national officers—these were the high spots in the historic movement. With the successful conclusion of the eastern and the middle western sectional conferences in June of that year and the Meeting of the Central Executive Board in September, the J. S. C. A. officially entered the first year of its activity. Since then three National Conventions were held: First at Evanston, Ill., in 1927, second at Detroit in 1928 and the third at Buffalo in 1931.

The association now enters the eleventh year of its activity.

Objects

THE objects of the J. S. C. A. are threefold: (1) to unite all Japanese, especially Christian, students and to cultivate an organized effort; (2) to promote growth of Christian character and fellowship among its members and to spread the Christian way of life among Japanese students in America; (3) to stimulate

capacity for service and to render needed services for the general welfare of Japanese students in America.

Practical Aims

BOTH nationally and locally, the J. S. C. A. will attempt to relate Japanese students to Christian influences in reading, daily contact, and practical life. For this purpose, the Local Chapters will endeavor to emphasize personal evangelism, to conduct religious forums or discussion groups; to foster prayer circles and prayer life, to encourage attendance at student Christian conferences, to organize sectional conferences, and to encourage contact with Christian homes.

Through the cooperation of the Local Chapters and the Friendly Relations Committee, the J. S. C. A. will attempt to promote friendly relations both among Japanese students and between Japanese students and American friends, as well as students from other lands, to the end that Christian principle of brotherhood may prevail.

Organization

THE J. S. C. A. is simple in its organization and consists of the four following divisions:

(1) **Local Chapters.** The members in each locality are organized into a Local Chapter in order to promote locally the objects of the Association and to provide a program of service and spiritual training for its members.

(2) **Central Executive Board.** The Central Executive Board is composed of the national officers elected by members and the Gen-

eral Secretary. It supervises the national affairs and activities of the Association.

(3) **General Secretary.** The Secretary for Japanese Students of the Committee on Friendly Relations among Foreign Students serves the J. S. C. A. as its General Secretary to maintain a central office to execute the program of service, to visit Local Chapters and scattered members in the interest of the Association, and to supervise the publications of the Association.

(4) **Central Advisory Committee.** The Central Advisory Committee is composed of fifteen friends of the J. S. C. A. movement to give advice and moral encouragement in all activities of the Association.

Membership

(1) **Regular Membership.** Regular membership in the J. S. C. A. is limited to Japanese students who are in sympathy with the objects of the Association and who make declaration of the purpose to work for their realization.

(2) **Cooperative Membership.** Any person, not a student, either Japanese or American, who is interested in the work of the Association, may become a Cooperative Member.

The right to hold office, however, is restricted to regular members of the Association.

J. S. C. A. Branches in Japan

IN order to bring together ex-J. S. C. A. members and to carry out the J. S. C. A. purposes in Japan, two branches are maintained as follows:

(1) The **Kwanto Shibu** is located in Tokyo with a temporary office in the Tokyo City Y. M. C. A. The following constitute the committee in charge: Prof. Takuo Matsumoto, Aoyama Gakuin, Aoyama, Tokyo; Miss Taki Fujita, Tsuda Eigaku-Jiku, Tokyo; Prof. Ryozo Sawada, Kwanto Gakuin, Tokyo.

(2) The **Kwansai Shibu** is located in Osaka, Mr. Tatsuzo Yamagata, Osaka Y. M. C. A., Osaka, is the Secretary.

Students in Japan who wish to receive information concerning American education and college life are asked to communicate with any one of the above.

Program of Service

THE *Japanese Student Bulletin*. The *Bulletin* is published bi-monthly, during the academic year, from October to June inclusive, as the official organ of the J. S. C. A. It is edited by the Editorial Board under the chairmanship of the General Secretary, and is distributed free of charge to members.

The *Bulletin* contains general news of interest to Japanese students, J. S. C. A. news, student forum, condensed news from Japan, special short articles of an informational nature, book reviews, bibliography of current periodical literature on Japan and things Japanese, and editorial notes.

The Directory of Japanese Students in North America. *The Directory of Japanese Students* is published once a year and distributed also free of charge to the regular members and friends. It contains a complete list of Japanese students who are studying in the institutions of higher learning in North Amer-

ica. The eleventh annual edition is being distributed.

J. S. C. A. Pamphlets. With the hope of serving the needs of Japanese students in America, the J. S. C. A. has taken steps to publish a series of pamphlets, of which the following have already appeared:

(1) **"Second Generation Problem: Some Suggestions Toward Its Solution,"** being Series One, Number One. This is an attempt to formulate suggestions for definite plans toward the solution of the problem on the Pacific Coast, and to arouse public interest toward definite, practical works.

(2) **"Educational System in Japan,"** being Series One, Number Two. This is an attempt to correlate Japanese and American institutions of higher learning, thereby facilitating the entrance of Japanese students to American institutions.

(3) **"Educational Guide for Japanese Students in the United States,"** being Series One, Number Three. This is an attempt to explain the American educational system for the benefit of newcomers, especially by providing guides to institutions according to subjects of studies and also to technical and professional schools.

(4) **"Japanese Civilization: A Syllabus,"** being Series Two, Number One. This is an outline guide for the study of Japanese civilization with reference to useful books.

J. S. C. A. Research Library. A Circulating Library, containing both Japanese and English books, of lasting and current interest, has been started in the Central Office. The books will be rented out by the mere payment of postage fees.

Practical Services

WITH the cooperation of the Friendly Relations Committee, the J. S. C. A. renders practical services to Japanese students. The following brief summary may show the general nature of these practical services.

(1) **To Students Entering Schools.** The J. S. C. A. gives information and counsel concerning institutions, entrance requirements, courses of study, facilities for research work, expenses, living conditions, etc., to students in America or students coming from Japan by carefully conducted correspondence or through personal interviews. The J. S. C. A. will aid the graduates of colleges and universities in Japan by correlating Japanese and American Institutions and negotiating for entrance. The J. S. C. A. further helps them, through its nation-wide connections, by introducing them to the local Japanese groups and American friends. (Attention of students in Japan is called to the proposed J. S. C. A. branches in Japan already mentioned.)

(2) **To Students Returning to Japan.** The Traffic Department is always ready to help them secure railway and steamship reservations, visa, passports, send baggage or books, etc. It will be glad to notify the Japanese members of the Association staff at the port of arrival in Japan to meet the returning students and assist them in regard to their baggage, customs examination, hotel, etc.

(3) **To Students Going to Europe.** The J. S. C. A. is in touch with the national student organizations in nearly All European countries. It can supply letters of introduction which may result, on the one hand, in the saving of much trouble, and, on the other, in placing at their disposal friendly assistance not

otherwise easily obtainable. It will also furnish information concerning colleges and universities in Europe and the sailing of steamers to Europe and secure reservations.

(4) **To Students Planning to Travel in America or Canada.** The J. S. C. A. will assist them in making their itineraries and reservations. It will give letters of introduction to proper authorities and Japanese students and friends in various cities or colleges so that the traveling students will receive proper attention upon their arrival and necessary cooperation to attain their objects.

(5) **To Students Wishing Mail Service.** The J. S. C. A. will receive and forward mail anywhere. Students who are uncertain of their permanent address will find this service extremely useful. It can also help locate any Japanese student in an American college or university, or to communicate with persons in Japan.

(6) **To Students Making Purchases.** As far as possible, the J. S. C. A. will help them buy whatever they need, particularly books, at a considerable saving of money.

(7) **To Students Looking for Lodging.** The J. S. C. A. will reserve or help to secure proper lodging places for new students in New York City, or through the cooperation of Local Chapters, anywhere throughout the country.

(8) **To Students Looking for Employment.** As far as possible the J. S. C. A. will gladly help students find employment, either for practical experience or for financial aid. It is hoped that this important work will be further developed so that in the near future, definite connections can be established to help secure employment for students graduating

from colleges, not only in America, but also in Japan.

(9) **To Students Needing Counsel in Personal and Religious Problems.** The General Secretary will give his friendly aid to students in their personal, moral, and religious problems, or their adjustment to American life. The local leaders all over the country are always at the service of students in putting them in touch with the churches, best American homes, and friends.

(10) **To Friends Wishing to Get Speakers on Japan.** The J. S. C. A. will help furnish speakers for various occasions, selected from Japanese student groups in different parts of the country.

FRIENDLY RELATIONS COMMITTEE AMONG FOREIGN STUDENTS

THE J. S. C. A. is at present affiliated with the Committee on Friendly Relations Among Foreign Students, whose Secretary for Japanese Students serves the former as its General Secretary. In fact, the J. S. C. A. owes its existence mainly to the encouragement and cooperation given to the Japanese student Christian movement by the Friendly Relations Committee.

The Friendly Relations Committee was organized in 1911 by Dr. John R. Mott and a little group of far-seeing men in New York City, and ever since has been a part of the International Committee of the Young Men's Christian Association. It maintains its headquarters and offices at 347 Madison Avenue, New York City, and its divers works are directed and conducted by a staff of seven secre-

taries, including several national secretaries. Mr. Charles D. Hurrey is (has been since 1915) the General Secretary. In the Japanese division of the Committee, Mr. Yoshiyasu Kumazawa is Secretary for Japanese students.

The aim of the Friendly Relations Committee is the development of Christian character among foreign students. Together with this fundamental aim, the Committee hopes to render innumerable other services toward the welfare of students from other lands. Its services and facilities are available, free of charge to students and professors from every land, without distinction of race, color, or religious profession. The Committee is interdenominational and international in its membership and spirit; it seems to meet the student's immediate needs and to cooperate with him in realizing his highest aspirations. It recognizes the need of friendly mediators between the foreign students and the people and institutions of America. It is the Committee's sincere desire that the student shall get what he has come for and that, returning, he shall entertain feelings of affection for America and that he will devote his energies to the promotion of international friendship and goodwill.

OFFICERS OF THE J. S. C. A.
THE CENTRAL EXECUTIVE BOARD
1934-1935

Acting President, Miss Kazue Takasugi, Crozer
Theological Seminary, Chester, Pa.

Vice President, Fumitaka Konoye, Princeton University,
Princeton, N. J.

Treasurer, Tatsuo Ono, Columbia University, New York
University.

Eastern Representative, Shigeyoshi Sakabe, Harvard
University, Boston, Mass.

Middle Western Representative, Rev. Kurao Tsuchiya,
Northern Baptist Theological Seminary in Chicago.

Western Representative, Miss Yuriko Lily Mizuno,
University of British Columbia, Vancouver, B. C.

**THE CENTRAL ADVISORY
COMMITTEE**

Norman F. Coleman

Walter F. Dexter

Charles D. Hurrey

Shailer Mathews

John R. Mott

Albert W. Palmer

David A. Robertson

A. A. Shaw

Mrs. Harper Sibley

Edmund D. Soper

T. C. Takami

Shiro Tashiro

George W. Wickersham

CENTRAL OFFICE

General Secretary, Masatane Mitani, 347 Madison Ave.,
New York City.

**OFFICERS OF LOCAL CHAPTERS
AND SECTIONAL REPRESENTATIVES**

Baker University, Baldwin City, Kans.:

Tadashi Kawai, P. O. Box 12, Baldwin, Kans.

Cornell Chapter, Ithaca, N. Y.:

President, Miss Nobuko Takagi, Balch Hall,
Ithaca, N. Y.

New York Chapter, New York, N. Y.:

President, T. Yamada, 176 Washington Pk., Bklyn.
Vice President, K. Furuya, 107 Post Ave.
Treasurer, S. Fujii, c/o Sumitomo Bank, 149
Broadway.
Corresponding Secretary, Miss Iku Kondo, 126
Valley Brook Ave., Lyndhurst, N. J.
Recording Secretary, Miss Momowe Higuchi, 110-
06—14th Rd., College Point, L. I.

Ohio State University, Columbus, Ohio:

Walter Ozawa, University Station, Box 3074,
Columbus, Ohio.

Purdue University, Lafayette, Ind.:

P. T. Yamashita, c/o University.

Reed College, Portland, Ore.:

Paul M. Yamada, 1430 First Ave., Portland, Ore.

Syracuse University, Syracuse, N. Y.:

Victor M. Otake, 725 Ostrom Ave., Syracuse,
N. Y.

University of British Columbia, Vancouver, B. C.:

Miss Mary Kato, 1234 W. 6th Ave., Vancouver,
B. C.

University of Kansas, Lawrence, Kans.:

Harry Takashi Hamaichi, 1244 Ohio St., Law-
rence, Kans.

University of Toronto, Toronto, Ont., Canada:

Miss Patricia Sugamori, 572 Huron St., Toronto,
Ont., Canada.

Virginia Theological Seminary, Alexandria, Va.:

G. Matsubara, c/o Seminary.

University of Washington:

Charles Tatsuta, c/o Japanese Students' Club,
Seattle, Wash.

Whittier College, Whittier, Calif.:

Miss Setsu Bessho, 209 W. Beverly Blvd., Monte-
bello, Calif.

J. S. C. A. BRANCHES IN JAPAN

Kwansai Shibu:

Secretary, Tatsuzo Yamagata, Osaka Y. M. C. A.,
Osaka.

Kwanto Shibu:

Committee in Charge, Prof. Takuo Matsumoto,
Aoyama Gakuin, Aoyama, Tokyo; Miss Taki
Fujita, Miss Tsuda's College, Tokyo; Prof.
Ryozo Sawada, Kwanto Gakuin, Tokyo.
Tentative Office, Tokyo City Y. M. C. A., Tokyo.

JAPANESE EMBASSY AND CONSULATES IN THE UNITED STATES OF AMERICA

Washington:

Embassy of Japan, 2514 Massachusetts Ave.,
Washington, D. C.

New York City:

Consulate-General of Japan, 500 Fifth Ave., New
York City, N. Y.

Chicago:

Consulate of Japan, 1533 Tribune Tower, Chicago,
Ill.

New Orleans:

Consulate of Japan, 3102 Prytania St., New Or-
leans, La.

Los Angeles:

Consulate of Japan, 116 Temple St., Los Angeles,
Calif.

San Francisco:

Consulate-General of Japan, 22 Battery St., San
Francisco, Calif.

Portland:

Consulate of Japan, 210 Henry Building, Port-
land, Ore.

Seattle:

Consulate of Japan, Central Building, Seattle,
Wash.

Hawaii:

Consulate-General of Japan, 1742 Nuuanu Ave.,
Honolulu, T. H.

JAPANESE CONSULATES IN CANADA

Ottawa:

Consulate-General of Japan, 45 Rideau St., Ot-
tawa, Canada.

Vancouver:

Consulate of Japan, 525 Seymour St., Vancouver,
B. C.

MISCELLANEOUS ADDRESSES

San Francisco, Calif.:

Japanese Y. M. C. A., 1409 Sutter St., San Francisco.

Japanese Association of America, 1619 Laguna St., San Francisco.

Seattle, Wash.:

Japan Society, Olympic Hotel, Seattle.

Chicago, Ill.:

International House, Chicago.

Japanese Y. M. C. A., 747 East 36th St., Chicago.

New York City, N. Y.:

Federal Council of the Churches of Christ in America, 105 E. 22nd St., N. Y. C.

International House, 500 Riverside Drive, N. Y. C.

Japan Society, 36 W. 44th St., N. Y. C.

Japanese M. E. Church and Institute, 323 W. 108th St., N. Y. C.

Japanese Chamber of Commerce of N. Y., Inc., 500 Fifth Ave., N. Y. C.

Japanese Christian Association, 453 W. 143rd St., N. Y. C.

Japanese Christian Institute, 330 East 57th St., N. Y. C.

Japanese Association, 1819 Broadway, N. Y. C.

National Committee on American-Japanese Relations, 287 Fourth Ave., N. Y. C.

Japan Tourist Bureau, 1 Madison Ave., N. Y. C.

Japan Culture Center, Columbia Library, Columbia University, N. Y. C.

Philadelphia, Pa.:

International Student House, 3905 Spruce St., West Philadelphia.

Boston, Mass.:

Japan Society of Boston, 44 School St., Boston.

KEY TO DIRECTORY

The Directory is arranged alphabetically by states and by colleges in each state. The places wherein the colleges are located are indicated in parentheses after each college. The names of the students are also alphabetically arranged by college. The index at the end of the Directory will take the place of the alphabetical list of all Japanese students.

Each name, if complete, should contain the following information: Family name and given name; class and major course in parenthesis; college address; birth place in parenthesis; preparatory school or higher institutions from which the student was graduated or previously attended.

The Directory contains the names of students who were born in Hawaii and on the mainland of America, and other countries, although they are citizens of the United States of America. This is done for the sake of convenience; it has no political significance whatever.

ABBREVIATIONS

Acad.—Academy.	Bot.—Botany.
Acct.—Accounting.	Bus.—Business.
Adv.—Advertising.	Bus. Adm.—Business Administration.
Aero.—Aeronautics.	B. Th.—Bachelor of Theology.
Aero-Eng.—Aero-Engineering.	C. or Col.—College.
Agr.—Agriculture.	C.E.—Civil Engineering.
Amer. Lit.—American Literature.	Chem.—Chemistry.
App. Sci.—Applied Science.	Chem. Eng.—Chemical Engineering.
Arch.—Architecture.	Ch. Hist.—Church History.
A.S.—Arts and Science.	Cloth.—Clothing.
Bact.—Bacteriology.	Col.—College Course.
Bank.—Banking.	Comm.—Commerce.
Biol.—Biology.	

Comp. Rel.—Comparative Religion.
 Dent.—Dentistry.
 Diet.—Dietetics.
 Draw.—Drawing.
 Econ.—Economics.
 Ed.—Education.
 E. E.—Electrical Engineering.
 Eng.—Engineering.
 Engl.—English.
 Eng. Lit.—English Literature.
 Ent.—Entomology.
 Ext.—Extension.
 Fin.—Finance.
 Gen.—General.
 Geol.—Geology.
 Govt.—Government.
 Gr.—Graduate Student.
 H. S.—High School.
 Hist.—History.
 Home Econ.—Home Economics.
 Ind.—Industry.
 Inst.—Institute.
 Int. Dec.—Interior Decoration.
 Int. Law—International Law.
 Interm.—Intermediate.
 Journ.—Journalism.
 Juris.—Jurisprudence.
 Kind.—Kindergarten.
 L. A.—Liberal Arts.
 L. A. & S.—Liberal Arts and Science.
 Land. Arch.—Landscape Gardening.
 Lang.—Languages.
 L. S.—Letters and Science.
 Low. Div.—Lower Dividends.
 Math.—Mathematics.
 Mech. A.—Mechanical Arts.
 M. E.—Mechanical Engineering.
 Med.—Medicine.
 Merch.—Merchandising.
 Met.—Metallurgy.
 Mid. S.—Middle School.
 Min.—Mining.
 Mod. Lang.—Modern Languages.
 Mus.—Music.
 New Test.—New Testament.
 Norm.—Normal.
 Nurs.—Nursing.
 Old Test.—Old Testament.
 Osteo.—Osteopathy.
 Pharm.—Pharmacy.
 Phil.—Philosophy.
 Phil. Rel.—Philosophy of Religion.
 Phys.—Physics.
 Phys. Ed.—Physical Education.
 Pol. Sci.—Political Science.
 Poly.—Polytechnic.
 Pract. Sci.—Practical Science.
 Pre-Dent.—Pre-Dental.
 Pre.Med.—Pre-Medical.
 Pre-Norm.—Pre-Normal.
 Prep.—Preparatory.
 Pre-Sec.—Pre-Secretary.
 Prim.—Primary.
 Psych.—Psychology.
 Pub. H.—Public Health.
 Rel.—Religion.
 Rel. Ed.—Religious Education.
 Ret.—Retailing.
 S.—School.
 Sci.—Science.
 Secr.—Secretarial.
 Sem.—Seminary.
 Soc.—Sociology.
 Soc. Sci.—Social Science.
 Sp.—Special.
 T. C.—Teachers College.
 Tech.—Technical.
 Theol.—Theology.
 Trans.—Transportation.
 U. or Univ.—University.
 Vet.—Veterinary.
 Voc. Ed.—Vocational Education.
 Zool.—Zoology.

* See Supplementary List.

**LIST OF JAPANESE ON THE FACULTY OF
NORTH AMERICAN COLLEGES AND
UNIVERSITIES**

Note: For the sake of convenience this list includes the names of certain persons connected with scientific bureaus and their offices in the higher educational institutions in North America.

- Asakawa, Kan-Ichi, B. A., Ph.D., Litt. D. (Yale U.), (236 H.G.S.), 228 Park St., Research Associate in History, and Curator of the Japanese and Chinese Collections, Yale University (Fukushima).
- Fujimoto, Giichi, A.B. and M.S. (U. of Hawaii)—Instructor in Chemistry, University of Hawaii.
- Fujishiro, Shinji, D.M.D. (Harvard U.)—Assistant in Orthodontia Dental School, Harvard University (Chiba).
- Fukushima, Iwao, B.A. (U. of Minnesota)—Teaching Fellow in Physics, University of Minnesota, (Kobe).
- Harada, Tasuka, B.D. (Yale U.) D.D. (Amherst C.), L.L.D. (Edinburgh)—Ex-President of Doshisha University; Professor of Japanese Language and History, University of Hawaii.
- Harada, Y., D.D.S., Professor of Dentistry, Washington University.
- Hatai, S., M.D. (U. of Penn.)—Professor of Neurology, Wister Institute of Anatomy and Biology, University of Pennsylvania.
- Hayashi, H.—Clinical Instructor of Prosthetic Dentistry, Dental School, University of California.
- Ichihashi, Yamato, A.B. and M.A. (Stanford U.), Ph.D. (Harvard U.)—Professor of Japanese History and Government, Leland Stanford Junior University.
- Kawai, Kazuo, A.B., M.A. (Stanford U.)—Instructor in Geography and History, University of California, at Los Angeles.
- Kitagawa, Kay Jiro, A.B. and M.D. (Stanford U.)—Assistant in Instruction and Research, Medical School, Leland Stanford University.
- Kitsuta, Kisaku—Assistant in Agricultural Chemistry, Ohio State University.
- Kiyasu, K., M.D.—Assistant Professor of Pediatrics, School of Medicine, University of California.
- Kudo, Rokusaburo, D.Ag.Sci. (Tokyo Imperial U.)—Associate in Zoology, University of Illinois.
- Kuno, Yoshisaburo, M.S. (U. of California)—Assistant Professor of Japanese Language, (Aichi).
- Manabe, Mitsuta, (Nippon Dental C.)—Assistant Dental School, Harvard University, (Ehime).
- Nakarai, Toyozo W., (Kokugakuin U.), M.A. (Butler U.), Ph.D. (U. of Michigan)—Professor in Old Testament, Butler University.

- Nakazawa, Ken—Lecturer in Oriental Studies, University of Southern California.
- Obata, Chiura—Lecturer in Fine Arts, University of California.
- Ogihara, Yuichiro, D.D.S. (Nippon Dental C.)—Instructor in Technical Laboratory, Texas Dental C., Houston, Texas.
- Saiki, Arthur Kazu, M.S.—Instructor in Physiology and Pharmacy, University of North Dakota.
- Shohara, Hide, Miss (Kobe Women's College), A.B., M.A., Ph.D. (U. of Michigan), Instructor in Linguistics, Univ. of Mich., Ann Arbor, Mich.
- Tashiro, Shiro, B.S. and Ph.D. (U. of Chicago), D.M.Sc. (Kyoto Imp. U.)—Professor of Bio-Chemistry, University of Cincinnati, (Kagoshima).
- Tatsumi, Henry S., A.B., M.A. (U. of Wash.)—Assistant in the Dept. of Oriental Studies, University of Washington, Seattle, Wash.
- Toda, Kenji—Artist, Department of Zoology, University of Chicago.
- Tsunoda, Ryusaku, Lecturer on History and Curator of Japanese Collection, 414 Library, Columbia Univ., New York City.
- Yoshioka, Joseph Geno, Ph.D.—Research Assistant in Comparative Psychology, Yale University.



**GRAND
CANYON**
and the
INDIAN DETOURS
on your Santa Fe way to
CALIFORNIA

The CHIEF is the fastest train to California.
The CALIFORNIA LIMITED and GRAND
CANYON LIMITED are fine trains without
extra fare.

Fred Harvey Dining Service Is Famous
C. E. Eaton, G.A.P.D., Santa Fe Ry.
505 Fifth Ave., New York City, N. Y.
Phone VANDerbilt 3-3791

JAPANESE STUDENTS IN CANADA

ALBERTA

University of Alberta (Edmonton) 4

- Inouye, Archie Masanori, (3rd Yr., App. Sci.), 10725
—86th Ave.
Kumagai, Paul Sakae, (3rd Yr., Med.), Room 17 Doug-
las Block, Whyte Ave., (Canada), Univ. of B. C.
Sanmiya, Mamoru, (1st Yr., Med.), c/o University,
(Japan).
Yamaoka, Nobuichi, (4th Yr., Arch.), c/o St. Stephen's
College, (Japan).

BRITISH COLUMBIA

University of British Columbia (Vancouver) 29

- Arima, Junichi, (2nd Yr., App. Sci.), 356 Powell St.,
(Japan).
Higashi, Shinobu, (2nd Yr., Arts), 546 Powell St.,
(Japan).
Higashi, Yoshimoto, (1st Yr., Arts), 546 Powell St.,
(Japan).
Hori, Chikao George, (4th Yr., Arts), 300 Dunsmuir
St., (Canada).
Iwasaki, Hideo William, (1st Yr., Arts), 500 Powell
St., (Canada).
Kato, Joichi George, (2nd Yr., Arts), 1234 W. 6th
Ave., (U. S.).
Kato, Miss Mary, (Arts), 1234 W. 6th Ave., (Canada).
Kishimoto, Yoshio, (1st Yr., Arts), 2099 W. 3rd Ave.,
(Canada).
Kitamura, Kengi, (1st Yr., Arts), 215 Gore Ave.,
(Canada).
Komiya, Takashi, (4th Yr., Arts), 3154 Vanness
Ave., (U. S.).
Kondo, Tsuneo, (2nd Yr., Arts), 500 Powell St.,
(U. S.).
Korenaga, Yujiro, (4th Yr., Comm.), 2685 Dundas
St., (U. S.).
Kusaka, Shuichi, (2nd Yr., Appl. Sci.), 368 Ft. Cor-
dova St. E., (Japan).
Masuda, Peter Fumio, (3rd Yr., Arts), 2000 Yukon
St., (Canada).
Mizuno, Miss Yuriko Lily, (3rd Yr., Arts), Box 84,
Steveston, (Japan).
Nakano, Haruo, (1st Yr., Arts), 5685 Victoria Rd.,
(Canada).

BRITISH COLUMBIA—Continued, N. S., ONT.,
QUEBEC

- Naruse, Henry, (1st Yr., Arts), Box 170, Steveston,
(Canada).
Obata, Roger, (3rd Yr., Appl. Sci.), 2099 W. 3rd Ave.,
(Canada).
Okamura, Hachiro, (Arts), Union College, Point Grey,
(Japan).
Okuda, Hiroshi, (4th Yr., Comm.), 333 Columbia Ave.,
(Japan).
Shoyama, Kunito Thomas, (2nd Yr., Arts), 767 Kings-
way, (Canada).
Sumida, Rigenda Togo, (Gr., Arts), 355 Powell St.,
(Japan), King George H. S.
Suzuki, Hajime, (2nd Yr., Arts), 526 Alexander St.,
(Canada).
Takahashi, Yukio, (4th Yr., Arts), Union College,
University Hill, (Canada).
Takimoto, Albert Shinichi, (1st Yr., Arts), 2292 E.
Hastings St., (Canada).
Tanaka, Fuji-Kazu, (2nd Yr., Arts), Union College,
University Hill, (U. S.).
Washimoto, Daniel K., (4th Yr., Arts), 396 Powell
St., (Canada).
Yatabe, Eiji, (2nd Yr., Appl. Sci.), 2818 Yew St.,
(Canada).
Yoshida, Kiyoko, (2nd Yr., Arts), P. O. Box 8, Steves-
ton, (U. S.).

NOVA SCOTIA

Pine Hill Divinity Hall (Halifax) 1

- Mori, Bunjiro, (Theol.), c/o Divinity Hall, (Japan).

ONTARIO

Training School of United Church of Canada
(Toronto) 2

- Kochi, Miss Kuni, (Sr.), 135 St. Clair Ave., W.,
(Japan).
Niwasi, Miss Sadako, (Theol.), Emmanuel College,
(Japan).

University of Toronto (Toronto) 1

- Shimizu, Shiro, (II, Pol. Sci.), 37 Constance St.,
(Japan).

QUEBEC

McGill University (Montreal) 1

- Nakano, Shimpei, (Arch.), P. O. Box 327, Sta. "B",
(Japan).

JAPANESE STUDENTS IN THE UNITED STATES

CALIFORNIA

Berkeley Baptist Divinity School (Berkeley) 3

- Hamada, Sadaye, (B. Th.), 2115 Parker, (Japan).
Kusunoki, Miss Yasuko, (Reg. Theol.), 1375 Pine St.,
San Francisco.
Nakamura, Isamu, (1st yr. B. Th.), 2610 Dwight Way,
(Hawaii), Pacific Union C.

California Institute of Technology (Pasadena) 9

- Kido, Koichi, (So. Sci.), 965 E. 10th St., Los Angeles,
(U. S.).
Kimura, Ben, (Jr., Eng.), Ricketts House, (U. S.).
Kurihara, Hisayuki, (Jr., Eng.), 135 S. Fair Oaks,
(Japan).
Nojima, Noble M., (So., Eng.), 1243 W. State, Long
Beach, (U. S.).
Obatake, Tanemi, (Sr., Eng.), Ricketts House, (U. S.).
Ohashi, George Yoshio, (Sr., Eng.), 2014 E. 3rd St.,
Los Angeles, (Japan).
Shinohara, Kenichi, (Gr., Phys.), 504 S. Catalina,
(Japan).
Tsubota, George, (—Eng.), 135 W. Bellevue, (U. S.).
Watanabe, Kenichi, (Jr., Sci.), 160 S. Mentor, (U. S.).

Church Divinity School of the Pacific (Berkeley) 1

- Nakajo, Korioka, (Theol.), 2451 Ridge Rd., (Japan).

Citrus Junior College (Azusa) 2

- Doi, Miss Yoncko, (Gen.), W. Allen Ave., Glendora,
(U. S.).
Ito, Miss Tatsuko A., (Gen.), c/o Mrs. Edna Paige,
Ben Lomand Ave., Covina, (Japan).

College of Medical Evangelists (Loma Linda) 5

- Hanaoka, Wilfred, (Med. V), c/o College, (Hawaii).
Kawaichi, George K., (Med. III), c/o College, (Calif.).
Kushi, Edward J., (Med. I), c/o College, (Hawaii).
Sumida, Perry (Med. I), c/o College, (Hawaii).
Tatsuguchi, Nobuo Paul, (Med. II), c/o College,
(Japan).

College of Osteopathic Physicians and Surgeons (Los Angeles) 2

- Kumai, Lawrence, (—), 141 S. Granada Ave.
Nagata, Wallace, (—), 141 S. Granada Ave.,
(Hawaii).

CALIFORNIA—Continued

College of the Pacific (Stockton) 4

- Fujishiro, Shuichi, (So. Sci.), Men's Hall, (U. S.).
 Hoshino, Denzaburo, (Sp.), 148 W. Washington,
 (Japan).
 Imura, Eiichi, (Sr., Hist.), c/o College, (Japan).
 Mikami, Koshi, (Sr., Soc.), 148 W. Washington,
 (Japan).

Compton Junior College (Compton) 5

- Kanda, Tomoji, (Math.), 725 W. Jefferson, Los Angeles.
 Kayano, Kiyoshi, (Acct.), 3651 E. 3rd St., Los Angeles.
 Kishi, Mitsuru, (Comm.), 10422 S. Main, Los Angeles.
 Shimomura, Shigeru, (Comm.), Route 2, Box 868.
 Shimomura, Takaji, (Comm.), Route 2, Box 868.

Fresno State Teachers College (Fresno) 13

- Akiyama, Miss Florence, (Engl.), 721 C St., (U. S.).
 Akiyama, Miss Helen, (Pre-Leg.), c/o College.
 Arase, Tamotsu, (Pharm.), c/o College.
 Hisamoto, Makato, (Phil.), 1542 Kern, (Japan).
 Koga, Miss Momoyo, (Nurs.), c/o College.
 Matsuda, Miss Chiyeko, (Soc. Sci.), c/o College,
 (U. S.).
 Miyake, Shegetto Rene, (Pre-Leg.), Route 6, Box 163,
 (U. S.).
 Mori, Akira, (Comm.), 1340 Kern, (Japan).
 Nakayama, Shintaro, (Sp.), 801 E St., (U. S.).
 Yamasaki, Tsugio, (M. E.), 1033 E St., (U. S.).
 Yemoto, Miss Koko, (Home Mak.), Route 9, Box 198,
 (U. S.).
 Yemoto, Miss Sadayo, (Home Mak.), Route 9, Box 198,
 (U. S.).
 Zukeran, Warren Shigeru, (Pre-Med), c/o College.

Fullerton Junior College (Fullerton) 9

- Kameyama, Yozen, (—), 547 W. Artesia Ave.,
 Artesia, (U. S.).
 Kanemitsu, Sunao, (—), Route 2, Box 481, Norwalk,
 (U. S.).
 Kitahato, Seito, (—), Route 1, Box 143-C, Artesia,
 (U. S.).
 Nakanishi, George, (—), Route 1, Box 154, Anaheim,
 (U. S.).
 Nakatani, Miss Kazuko, (—), Route 2, Box 446,
 Norwalk, (U. S.).
 Nishio, Fred, (—), Route 1, Box 132-D, Whittier,
 (U. S.).
 Nishizu, Miss Ruth, (—), Route 1, Box 72, Buena
 Park, (U. S.).
 Yamachika, Fumiye, (—), Route 1, Box 60, Buena
 Park, (U. S.).
 Yamada, Yaju, (Gen.), Route 4, Box 416, Santa
 Ana, (Japan).

CALIFORNIA—Continued

Glendale Junior College (Glendale) 11

- Hayashi, Masao, (Econ.), 421 W. Chevy Chase, (Japan).
 Hiraoka, Shunichi, (Law), 569 Oak St., (Hawaii).
 Imoto, Miss Chiduyo, (Lib. Sci. & Journ.), 1210 N. Geneva, (U. S.).
 Maeda, Miss Shigeko, (Comm.), 1719 Glenwood Rd., (Japan).
 Maki, Hideshi, (Journ.), 914 S. Central Ave., (Japan).
 Matsushita, Kai, (—), 501 E. Main St., Burbank, (U. S.).
 Nito, Ronald, (Comm.), 323 Geneva St., (Japan).
 Oda, Taiichi, (Econ.), 323 Geneva St., (Japan).
 Ogata, E. Osamu, (Econ.), 430 W. Chevy Chase, (Japan).
 Sagayama, Yori, (Engl.), 801 Maple St., (Japan).
 Tsuchiya, Eichira, (Engl.), 719 N. Central, (U. S.).

La Verne College (La Verne) 1

- Abe, Shogo, (L. A.), 2333—3rd St., (Hawaii).

Long Beach Junior College (Long Beach) 3

- Hata, Frank Haruo, (Eng.), 1629 Chestnut Ave.
 Nagai, Ichio, (Eng.), Route 2, Box 506.
 Watanabe, Miss Fuziko, (L. A.), 2273 Olive Ave.

Los Angeles Pacific College (Los Angeles) 7

- Anraku, Miss Yuki, (Sp.), 331 South Ave.
 Arimoto, Hisao, (L. & S.), 170 Maple Ave.
 Genroku, Otani, (—), 118 S. Soto St.
 Hattori, Tadashi, (—), 1716 Sunset.
 Higashi, Masanori, (Sp.), 918 Gardena Blvd., Gardena.
 Takata, Hiroshi, (L. & S.), 1131 W. 25th Pl.
 Takata, Miss Yoneko (Sp.) 208 N. Saratoga.

Mills College (Mills College) 3

- Eto, Miss Alice (Home Econ.), c/o College, (U. S.).
 Tamato, Miss Fudeko, (Engl.), c/o College.
 Yanagawa, Miss Kimi, (Gen.), c/o College, (U. S.).

Modesto Junior College (Modesto) 4

- Kito, Toshio, (Comm.), Route 6, Box 212, Stockton, (Japan).
 Komure, Seiichi, (Eng.), 702½—7th St., (Japan).
 Togashi, Miss Sada, (For. Lang.), 627—8th St., (U. S.).
 Yamota, Miss Juna Ruth, (Home Econ.), Box 19, Livingston, (U. S.).

Occidental College (Los Angeles) 2

- Miyakawa, Miss Kikuko Kay, (Sr., Phil.), Orr Hall, (U. S.).
 Suzuki, Tsutomu Tom, (Sr., Chem.), 11178 Mass. Ave., West L. A., (Japan).

CALIFORNIA—Continued

Otis Art Institute (Los Angeles) 7

- Kurata, Miss Shizue, (Draw.), 466 S. Savannah St., (Japan).
Masuda, James, (Draw. & Comm. Art), 248½ E. 5th St., (U. S.).
Masukawa, Shoso, (Life), 640 San Julian St., (Japan).
Sugimoto, Tashio, (Design), Box 57, San Pedro, (Japan).
Tanaka, Miss Emily, (2nd Yr., Comm. Design), 316 S. Mott St., (U. S.).
Tatsuno, Miss Yaeko, (Comm. Design), 242 E. 1st St., (Japan).
Yamazaki, Matsuo, (Comm. & Dec. Design), 735 San Julian St., (Japan).

Pacific Union College (Angwin) 11

- Gima, Richard Shinki, (Col.), c/o College.
Higa, Benjamin, (Pre-M.), c/o College, (Hawaii).
Kawabe, Kiyoto, (Pre-M.), c/o College, (Hawaii).
Miyagi, Seiichi, (Pre-M.), c/o College, (Hawaii).
Morita, Yoshio, (So., Pre-M.), c/o College, (Hawaii).
Nashiwa, James Kazuya, (Comm.), c/o College (Hawaii).
Nosaki, Tom Toshio, (Pre-M.), c/o College, (Hawaii).
Oshito, Hideo, (Theol.), c/o College, (Hawaii).
Sesoko, Miss Harriet Kimiko, (Pre-Nurs.), c/o College, (Hawaii).
Suzuki, John Ichiro, (Pre-M.), c/o College, (Japan).
Taira, Harry Y., (Pre-M.), c/o College, (Hawaii).

Pasadena College (Pasadena) 4

- Kira, Tadashi, (So., L. A.), 3353 N. Marengo.
Kuba, Miss Tsuta, (L. A.), 330 Arlington Dr.
Ozawa, Hayato Harris, (L. A.), 527 S. Fair Oaks, (Japan).
Shiojima, Hifumi, (L. A.), 1773 W. 35th Pl.

Pasadena Junior College (Pasadena) 70

- Aisawa, Miss Yoneko, (—), c/o College, (U. S.).
Asakura, Jim, (—), c/o College, (Hawaii).
Asmeshima, Miss Fumi, (—), c/o College, (U. S.).
Doi, Bert. (—), c/o College, (Hawaii).
Fujimoto, Miss Shizuko, (—), c/o College, (U. S.).
Gomes, Anthony, J., (—), 244 W. Colorado, (Japan).
Haramoto, Miss Toshi, (—), c/o College, (U. S.).
Hasama, Michiye, (—), c/o College, (U. S.).
Hazama, George, (—), c/o College, (U. S.).
Hohri, Miss Salko, (—), c/o College, (Japan).
Hohri, Samuel (—), c/o College, (Japan).

CALIFORNIA—Continued

- Homma, Miss Yoshiko, (—), c/o College, (U. S.).
 Igauye, Noboru, (—), c/o College, (U. S.).
 Ikeda, Miss Yuri, (—), c/o College, (U. S.).
 Ishihara, Paul, (—), c/o College, (Japan).
 Ito, Isuke, (—), c/o College, (Japan).
 Kako, Miss Helen, (—), c/o College, (U. S.).
 Katahira, Yoichiro, (—), 3550 Sunnyside Ave.,
 Sierra Madre, (Japan).
 Kato, Miss Lorna, (—), c/o College, (U. S.).
 Kawai Shigeru, (—), c/o College, (U. S.).
 Kirita, Jimmie, (—), c/o College, (U. S.).
 Kodani, Masuo, (—), c/o College, (U. S.).
 Komori, Arinori, (—), c/o College, (U. S.).
 Kondo, Miss Yuri (—), c/o College, (U. S.).
 Koyama, Miss Jessie, (—), c/o College, (U. S.).
 Kunihiro, Matsuo, (—), c/o College, (U. S.).
 Kunihiro, Mitsuo, (—), c/o College, (U. S.).
 Kunihiro, Shizuo, (—), c/o College, (U. S.).
 Kuramoto, Sam, (—), c/o College, (U. S.).
 Kurokawa, Kujoshi, (—), c/o College, (U. S.).
 Kurokawa, Yozo, (—), c/o College, (U. S.).
 Matsumoto, George, (—), c/o College, (U. S.).
 Mikuriya, Miss Chiyeko, (—), c/o College, (U. S.).
 Mikuriya, Kay, (—), c/o College, (U. S.).
 Negoro, Kaiui, (—), c/o College, (U. S.).
 Nikaido, Susumu, (—), c/o College, (Japan).
 Nomura, Charles Mitsuo, (—), 164 W. Grove St.,
 Sierra Madre, (U. S.).
 Nomuro, Sho, (—), c/o College, (U. S.).
 Ogara, Leonard, (—), c/o College, (U. S.).
 Ogura, Miss Sakiko, (—), c/o College (U. S.).
 Ogura, Miss Yumi, (—), c/o College, (U. S.).
 Okimoto, Richard, (—), c/o College, (Japan).
 Otake, Larry Takeo, (—), c/o College, (Hawaii).
 Ozawa, Hayata, (—) c/o College, (Japan).
 Sameshima, Kenja, (—), c/o College, (U. S.).
 Sato, Miss Fumiko, (—), c/o College, (U. S.).
 Sato, Miss Kiyoko, (—), c/o College, (U. S.).
 Seiki, Miss Anna, (—), c/o College, (U. S.).
 Shimamoto, Miss Haruko, (—), c/o College, (U. S.).
 Shimazu, Miss Mary, (—), c/o College, (U. S.).
 Suda, Walter, (—), c/o College, (U. S.).
 Suenaga, Henry, (—), c/o College, (U. S.).
 Sumeragi, Atsuyuki, (—), c/o College, (Japan).
 Tagashira, Miss Hamako, (—), c/o College, (U. S.).
 Tajima, Miss Sophie, (—), c/o College, (U. S.).
 Tajima, Yuyi, (—), c/o College, (Japan).
 Takahashi, William, (—), c/o College, (U. S.).
 Takasugi, Miss Tomoye, (—), c/o College, (U. S.).
 Takayama, Hideo, (—), 310 W. Greet St., (U. S.).
 Takayama, Shigeo, (—), c/o College, (U. S.).
 Takeshige, John, (—), c/o College, (U. S.).
 Takeuchi, Miss Mary, (—), c/o College, (U. S.).

CALIFORNIA—Continued

Tanaka, Manabu, (—), c/o College, (U. S.).
 Tomoyasu, Miss Kimi, (—), c/o College, (U. S.).
 Tsuneishi, Hughes, (—), c/o College, (U. S.).
 Uchida, Miss Setsuko, (—), c/o College, (U. S.).
 Uchiyama, Miss Emily, (—), c/o College, (U. S.).
 Wakiyi, Miss Takeko, (—), c/o College, (U. S.).
 Yamada, Kitao, (—), c/o College, (U. S.).
 Yatabe, Miss Minoe Grace, (—), c/o College,
 (Japan).

Pomona College (Claremont) 2

Mikami, Miss Tsuyako, (—), Fontana, (U. S.).
 Takahasa, Henry Hirayuki, (L. A.), Smiley Hall,
 (Japan).

Porterville Junlor College (Porterville) 3

Imoto, Hijoshi, (Acad.), c/o College, (U. S.).
 Kaku, Shoji, (Acad.), Lindsay, (U. S.).
 Shimisaki, Tom, (Acad.), Strathmore (U. S.).

Riverside Junlor College (Riverside) 7

Fujisaki, Charles K., (L. S.), 4255 Market, (U. S.).
 Nishimura, Benjamin, (—), 3651—3rd St., (Japan).
 Ochiai, Tadeshi, (—), 2993—14th St., (U. S.).
 Sawahata, Alfred, (—), 3560 Franklin Ave., (U. S.).
 Shibata, George, (L. S.), 4418 Howard Ave., (U. S.).
 Takeda, Charles, (L. S.), 2915 Madison, (U. S.).
 Teshima, John, (L. S.), 4403 Park Ave., (U. S.).

Sacramento Junlor College (Sacramento) 62

Abe, Miss Alice, (L. & S.), 1323—4th St., (U. S.)
 Abe, Miss Mary, (Comm.), 1323—4th St., (U. S.)
 Aoki, Miss Alyce, (L. & S.), 1223½—4th St., (U. S.).
 Asami, Taiichi, (Sci.), 2736—10th Ave., (Japan).
 Baba, Karjiro, (Comm.), 1206—4th Ave., (Japan).
 Fujii, William, (L. & S.), 1405—4th St., (U. S.).
 Hara, George, (L. & S.), 326 M St., (U. S.).
 Hirai, Kaoru, (L. & S.), 1522 X St., (U. S.).
 Hiyama, H. Frank, (Eng.), 1817—3rd St., (U. S.).
 Honda, Yasuo, (L. & S.), 1327—4th St., (U. S.).
 Ichikawa, George, (L. & S.), 415 O St., (U. S.).
 Imagawa, Richard Masayuki, (L. & S.), Route 1, Box
 5520, (U. S.).
 Inagaki, George, (L. & S.), Route 5, Box 400, (U. S.).
 Ishida, Masao, (Aero.), Route 8, Box 184, (U. S.).
 Ishikawa, Jin, (L. & S.), Route 4, Box 3113, (U. S.).
 Iwasaki, Miss Tomiko, (L. & S.), Route 8, Box 1719.
 (U. S.).
 Kambara, George, (L. & S.), 1609—37th St., (U. S.).

CALIFORNIA—Continued

- Kamiya, Ichiro, (Agr.), 1423½—5th St., (Japan).
 Kato, William Yoshiharu, (Comm.), Box 7, Locke,
 (U. S.).
 Kawamoto, Miss Joice, (L. & S.), 1064—41st St.,
 (U. S.).
 Kimura, Tetsuo, (E. E.), 1427—4th St., (U. S.).
 Korematsu, Hiroshi, (Agr.), 2159 Perkins Way,
 (U. S.).
 Kubo, James, (L. & S.), 1018½—3rd St., (U. S.).
 Kurima, Wilbert, (Eng.), Box 125, Florin, (U. S.).
 Makimoto, Midori, (L. & S.), 925—3rd Ave., (U. S.).
 Mayeda, Fred, (M. E.), 1710—5th St., (U. S.).
 Miura, Shinichi, (L. & S.), 1319—4th St., (U. S.).
 Miura, Tadashi Tod, (L. & S.), Route 1, Box 174,
 (U. S.).
 Miura, Miss Yayoi Lilly, (L. & S.), Route 8, Box
 851, (U. S.).
 Miwa, Miss Edna, (L. & S.), 1330 V St., (U. S.).
 Miyahara, Hoshi, (L. & S.), 2211—16th St., (U. S.).
 Miyao, Herbert Kokuo, (L. & S.), Box 83, Florin,
 (U. S.).
 Nakamura, Shigeo, (Comm.), 512½ J St., (U. S.).
 Nakamura, Toshio, (Aero.), 956—4th St., Woodland,
 (U. S.).
 Nakano, Shigeo, (L. & S.), Route 1, Box 5730, (U. S.).
 Nakayama, Takao, (Agri.), 410 M St., (U. S.).
 Nishi, Charles Teishi, (Pre-M), Florin, (U. S.).
 Nishimura, Miss Shizuka, (Journ.), 227 J St., (U. S.).
 Noguchi, David, (L. & S.), 3608 Riverside Blvd.,
 (U. S.).
 Oda, Ben H., (Art), Florin, (U. S.).
 Ogawa, Miss Futami, (L. & S.), 1112½—3rd St.,
 (U. S.).
 Okamoto, Kaoru, (Comm.), 845—9th Ave., (Japan).
 Okusako, Hideo, (L. & S.), 2757—10th Ave., (U. S.).
 Okazaki, John Daisaku, (Comm.), 522½ L-M Alley,
 (Japan).
 Oki, John Kenkichi, (L. & S.), 1308—6th St., (U. S.).
 Oshita, Sakaye, (Phys. Ed.), 2006—6th St., (U. S.).
 Sakai, Miss Pansy Tamiko, (Sci.), Clarksburg, (U. S.).
 Sakata, Miss Alice Kimiko, (Art), 1011—8th Ave.,
 (U. S.).
 Sasaki, Everett Shigeo, (Agr.), Route 2, Box 3542,
 (U. S.).
 Satow, Miss Eureka, (Secr.), 1417—5th St., (U. S.).
 Shimizu, Kiyoshi, (Pre-Dent.), 415 O St., (U. S.).
 Sugawara, Peter, (Pre-M.), 1522 X St., (U. S.).
 Suyemoto, Miss Toyo, (L. & S.), 421 O St., (U. S.).
 Takahashi, Joseph Govo, (L. & S.), 510 U St., (U. S.).
 Takeuchi, James Naoji, (L. & S.), 327 M St., (U. S.).
 Toriumi, Howard Noboru, (L. & S.), 407 N St.,
 (U. S.).

CALIFORNIA—Continued

- Tsuda, Robert Roku, (L. & S.), 1324—3rd St., (U. S.).
 Tsukamoto, Alfred Iwao, (L. & S.), Route 1, Box
 173, Florin, (U. S.).
 Yamagata, Howard Yasuo, (Arch.), 1330—4th Ave.,
 (U. S.).
 Yamamoto, Louis Shigeto, (L. & S.), Route 1, Box
 5741, (U. S.).
 Yamasaki, Fred S., (Comm.), 74 Japanese Alley,
 (U. S.).
 Yoshikawa, Tsuneo, (Sp.), Route 4, Box 3032, (U. S.).

San Bernardino Valley Union Junior College
 (San Bernardino) 2

- Hirata, Miss Masako, (Gen.), 448 Lugo St., (U. S.).
 Katayama, Yoshio, (Gen.), 149—6th St., (U. S.).

San Francisco State Teachers College
 (San Francisco) 8

- Kajiwara, LeRoy, (Pre-Secr.), 2263 Pacific Ave.,
 (U. S.).
 Kamiya, Phyllis, (Pre-Secr.), 1499 Geary St., (U. S.).
 Koike, Yasuha, (Pre-Secr.), 1409 Sutter, (U. S.).
 Nakahira, Shizue, (Elem.), 1211 Sutter, (U. S.).
 Omori, Nobu, (Pre-Secr.), 1919 Fillmore St., (U. S.).
 Shioto, Fumi, (Elem. Jr. H. S.), 2009 Buchanan St.,
 (U. S.).
 Takaki, Miss Chiyoko, (Pre-Secr.), 1869 Buchanan,
 (Hawaii).
 Takiguchi, Seiko, (Unclass.), 2013 Bush, (U. S.).
 Yoshimura, Nobu, (—), 1398 O'Farrell St., (U. S.).

San Francisco Theological Seminary
 (San Anselmo) 2

- Kanai, Masasuke, (Mid.), c/o Seminary, (Japan).
 Tonegawa, Ichiro, (Mid.), c/o Seminary, (Japan).

San Jose State Teachers College (San Jose) 43

- Aihara, Chitose, (—), 7931 S. F. Highway, Sunny-
 vale, (U. S.).
 Aiura, Kiyō, (—), R.F.D. Box 54A, Irvington,
 (U. S.).
 Hamasaki, Henry, (—), Los Altos, (U. S.).
 Hase, Kiyō, (—), Route 2, Box 337, Lemoore,
 (U. S.).
 Hase Miyo, (—), Route 2, Box 337, Lemoore,
 (U. S.).
 Higashiuchi, Yoshio, (—), Los Altos, (U. S.).
 Higuchi, James (—), Route 1, Box 361A, (U. S.).
 Himeda, Eddie, (—), 800 California Ave., Palo
 Alto, (U. S.).
 Hirabayashi, Toshio, (—), Cor. Castro & Villa, Mt.
 View, (U. S.).
 Hirayama, Elsie, (—), Mountain View, (U. S.).
 Ichishita, George, (—), 1001 S 10th St., (U. S.).

CALIFORNIA—Continued

- Ishida, Miss Masako, (Ed. 4), R.F.D. 8, Box 184, Sacramento, (U. S.), Sacramento Jr. C.
- Iwori, Marilyn, (—), Route 1, Box 336, (U. S.).
- Kadoiki, Miss Virginia, (—), 546 N. 6th St., (Japan).
- Kimura, Rankin, (—), Los Altos, (U. S.).
- Kojima, Miss Iris, (—), 829 Bird Ave., (Japan).
- Matsumura, Philip, (—), Route 2, Box 117E, (U. S.).
- Mineta, Aya, (—), 545 N. 5th St., (U. S.).
- Mineta, Etsu, (—), 546 N. 5th St., (U. S.).
- Miyamoto, Takahisa, (—), P. O. Box 865, Carmel, (U. S.).
- Miyamoto, Yositaka, (—), P. O. Box 865, Carmel, (U. S.).
- Nakano, Miss Edith, (—), P. O. Box 149, Mt. View, (U. S.).
- Nakashiki, Toshio, (—), Route 1, Box 393A, Gilroy, (U. S.).
- Nishihara, Miss Ida, (—), 709 Lincoln Ave., (U. S.).
- Nishimura, Luther, (—), 363 S. 7th St., (U. S.).
- Ogata, Miss Yoshiye, (—), Route 1, Box 610, Santa Clara, (U. S.).
- Okamoto, Miss June, (—), 326 N. 21st St., (U. S.).
- Okamoto, Susumu, (—), 1135 Crane St., Menlo Park, (U. S.).
- Okamoto, Yokio, (—), 326 N. 21st St., (U. S.).
- Ono, Dan, (—), 417 Scott Lane, Santa Clara, (U. S.).
- Ozawa, Roy, (—), Route 1, Box 305, Cupertino, (U. S.).
- Sakamoto, David, (—), 627 N. 6th St., (U. S.).
- Sakamoto, Micheo, (—), 627 N. 6th St., (U. S.).
- Sasaki, Micheo, (—), Box 292, Menlo Park, (U. S.).
- Sato, Miss Kiyō, (—), 733 Ramona St., Palo Alto, (U. S.).
- Shibuya, Madoka, (—), Grant Road, Mt. View, (U. S.).
- Takaichi, Miss Martha, (—), Route 2, Box 246, (U. S.).
- Uriu, Masaye, (—), Route 1, Box 900, Sunnyvale, (U. S.).
- Ushiro, Arthur K., (—), P. O. Box 5, Los Altos, (U. S.).
- Ushiro, California, (—), P. O. Box 5, Los Altos, (U. S.).
- Yamakawa, Masami, (—), Route 2, Box 268, (U. S.).
- Yamakawa, Utaka, (—), Route 3, Box 60, (U. S.).
- Yonemoto, Fred, (—), 271 N. Muraphy Ave., Sunnyvale, (U. S.).

CALIFORNIA—Continued

Santa Ana Junior College (Santa Ana) 6

- Furuta, Raymond, (Eng.), Route 1, Box 239, Huntington Beach, (Japan).
 Furuta, Miss Toshiko, (Comm.), Route 1, Box 239, Huntington Beach.
 Ishii, Charles, (Eng.), Route 3, Box 375.
 Matsukane, Harry Hideo, (—), Route 4, Box 652, (U. S.).
 Ogawa, Harry H., (—), Route 1, Box 46, Garden Grove, (U. S.).
 Yoshida, Yoshiki, (L. & S.), Route 2, Box 295.

Santa Maria Union Junior College (Santa Maria) 3

- Shimada, Masao, (Dip.), Box 47, Guadalupe.
 Yamamoto, Victor, (Dip.), Box 47, Guadalupe.
 Yasunaga, Miss Masayo, (Comm.), Box 514, Guadalupe.

Southwestern University (Los Angeles) 2

- Katsu, Kanari, (—), 236 E. 2nd St., (Japan).
 Kodama, Kenbun, (—), 2029 W. 28th St., (Japan).
Stanford University (Stanford University) 12
 Fujimoto, Tadashi, (—), Box 598, (Japan).
 Hara, Masuki, (Lower Div.), Box 2174, (U. S.).
 Ida, Paul Kazue, (Econ.), Box 598, (Japan).
 Inouye, Charles Ichiro, (Soc. Sci.), Route 1, Box 196 E., Mountain View, (U. S.).
 Nakamura, Hiomi (Bas. Med. Sci.), c/o General Delivery, (U. S.).
 Nao, Miss Tamaki, (Hist.), 823 Valparaiso, Menlo Park, (U. S.).
 Oi, Tetsuo, (Lower Div.), Box 598, (Hawaii).
 Okagaki, I. Henry, (Basal Med. Sci.), Box 647, San Jose, (U. S.).
 Oki, Thomas Soichiro, (Lower Div.), Box 1060, (U. S.).
 Tani, Henry Nobuo, (Lower Div.), Box 598, (U. S.).
 Tokuzawa, Ryutan, (Gr. German), 766 Emerson, Palo Alto, (Japan).
 Yamamoto, Ray, (Lower Div.), Box 598, (U. S.).

University of California (Berkeley) 205

- Akimoto, Miss Bertha M., ('37, Hist.), 1716 Dwight Way B, (Japan).
 Aoki, Miss Anna J., ('37, Sci.), 2830 Derby St., (U. S.).
 Aoki, Peter S., ('37, Pre-Med.), 2016 Milvie St., (U. S.).
 Aoki, Shozo, ('38, Comm.), 2603 Union St., (U. S.).
 Asami, Kikuo, ('36, Comm.), 2539 Fulton St., (U. S.).

CALIFORNIA—Continued

- Dekuzaku, Miss Ruth, ('36 L. & S.), 12 Indian Rock Path, (U. S.).
- Domoto, Miss Yuriko, ('35, Econ.), 7321 Krause St., Oakland, (U. S.).
- Endow, Edward A., ('38, Pharm.), 1627 Parker St., (U. S.).
- Enomoto, William, ('36,—), 1777 Euclid Ave, (U. S.).
- Fujii, Miss Mary S., ('35, L. & S.), 2500 Durant Ave., (U. S.).
- Fujioka, Miss Michihiko, ('37, Comm.), 1615 Virginia St., (U. S.).
- Fujioka, Takashi R., ('36, E. E.), 1615 Virginia St., (U. S.).
- Fujishige, Miss Alice, ('36, L. & S.), 629 Santa Rosa Ave., (U. S.).
- Fujita, Miss Eugenia Yuriko, ('35, Pre-Med.), 1877 Sutter St., San Francisco, (U. S.).
- Fujita, Miss Kathleen, ('38, L. & S.), 1877 Sutter St., (U. S.).
- Fujita, Samuel J., ('37, Comm.), 1777 Euclid Ave., (U. S.).
- Fukuda, Frank, ('36, E. E.), 464—24th St., Oakland, (U. S.).
- Fukui, Frank F., ('36, Comm.), 1745 Buchanan, (U. S.).
- Furuta, William J., ('36, L. & S.), P. O. Box 417, Concord, (U. S.).
- Ginoza, Yekoh W., ('36, L. & S.), 1777 Euclid Ave., (U. S.).
- Goto, Mazuo, ('37, L. & S.), 1777 Euclid Ave., (U. S.).
- Hara, Shigeru, ('36,—), 2912 King, (U. S.).
- Hasegawa, Tatsuo, ('35, Eng.), 3611 Sacramento St., San Francisco, (U. S.).
- Hishimoto, Masato, ('38, Pre-Med.), 2407 Fulton St., (U. S.).
- Hawegawa, Junji, ('38,—), International House, (U. S.).
- Higa-hiuchi, Kazuo E., ('35, Pre-Med.), 1777 Euclid Ave., (U. S.).
- Higuchi, Francis M., ('35, Comm.), 1408 Russell St., (U. S.).
- Hirayama, Masaichi, (Gr., Comm.), 506 Madison St., Oakland, (Japan).
- Hori, Taichiro, ('35, Eng.), Route 3, Box 278, Lodi, (Japan).
- Hoshino, Masao, ('37,—), 1777 Euclid Ave., (U. S.).
- Ichio, Miss Miki, ('37,—), 28 Plaza Dr., (U. S.).
- Ichisaka, Morio, ('37,—), P. O. Box 145, Livingston, (U. S.).
- Ichiyasu, Miss Ayama, ('37, L. & S.), 1577 Laguna St., San Francisco, (U. S.).

CALIFORNIA—Continued

- Iida, Miss Lillian Yuri, (—Ed.), 1547 Parker St., (U. S.).
- Iijima, Miss Misaki, ('35,—), 939—35th St., Oakland, (U. S.).
- Iino, Miss Carol K. ('38,—), 1480—14th St., Oakland, (U. S.).
- Ikeda, Miss Fusae, ('36, L. & S.), 2739 Stuart St., (U. S.).
- Ikida, Miss Noriko, ('35, L. & S.), 3528 Hillegass Ave., (U. S.).
- Imamura, Miss May, ('35,—), 1711 Carleton St., (U. S.).
- Imura, Taizo W., ('37, Comm.), 2225 Pacific Ave., Alameda, (U. S.).
- Inouye, Ari, ('36, L. & S.), 5919 Canning St., Oakland, (U. S.).
- Inouye, Kaoru, ('37, L. & S.), 1777 Euclid Ave., (U. S.).
- Inouye, Tsotomu T., ('38,—), 2305 Eagle Ave., Alameda, (U. S.).
- Iriki, Masanori, (Gr.), 1602—12th St., Oakland, (Japan).
- Isokawa, Ichio, ('35, L. & S.), 4331 Clement St., Oakland, (U. S.).
- Itatani, Masayoshi, ('36, Pre-Med.), 1669 Post St., San Francisco, (U. S.).
- Ito, Tomoo, ('38,—), 2728 Channing Way, (U. S.).
- Iwamoto, Harry K., ('37,—3076 Claremont Ave., (U. S.).
- Iwatsu, Sunao J. ('37, L. & S.), 2273 Pine St., San Francisco, (U. S.).
- Kai, Miss Marie, ('38, L. & S.), International House, (U. S.).
- Kajiwara, Nobuo, ('36, L. & S.), 1034—10th St., Oakland, (U. S.).
- Kamikawa, Thomas T., ('37 L. & S.), 1777 Euclid Ave., (U. S.).
- Kano, Miss Mary, ('38, Pharm.), 1044 Willow St., Oakland, (U. S.).
- Karoyama, Thurston J., (Gr., L. & S.), 2026 Blake St., (U. S.).
- Kasai, Yoshio, ('38, Comm.), 1124 E. 14th St., Oakland, (U. S.).
- Katow, Masakazu, ('36, Eng.), 1777 Euclid Ave., (U. S.).
- Kawahara, Hiroshi, ('37, L. & S.), 1716 Waller St., San Francisco, (U. S.).
- Kawashima, Hajime, (Gr.), 1359 Pine St., San Francisco, (Japan).
- Kazato, Henry H., ('35, L. & S.), 1777 Euclid Ave.
- Kiino, Hugh M., ('35, Pre-Med.), 1777 Euclid Ave., (U. S.).

CALIFORNIA—Continued

- Kimura, Harold H., ('36, Eng.), 1777 Euclid Ave., (U. S.).
- Kimura, Miss Frances, ('37, Pre-Med.), 2912 King St., (U. S.).
- Kimura, Miss Jeannette, ('36, L. & S.), 2539 Fulton St., (U. S.).
- Kimura, Jiro, ('35, Zool.), 2912 King St., (U. S.).
- Kitano, Miss Bessie, ('38, L. & S.), 949 Clay St., San Francisco.
- Kitazumi, Edward, (Gr.), 2720 Dwight Way, (U. S.).
- Kobayashi, Miss Hisako, ('35, L. & S.), 2119 Haste St., (U. S.).
- Komatsu, Ota, ('36, L. & S.), 775—16th St., Oakland, (U. S.).
- Komatsu, Shigego, ('38, L. & S.), 2043 Bush St., San Francisco.
- Kondo, Benjamin, ('35, Med.), 2498 Piedmont Ave.
- Kondo, George, ('35, Comm.), 1640 Delaware St., (U. S.).
- Kondo, Miss Hisae, ('37, L. & S.), 2212 Encinal Ave., Alameda, (U. S.).
- Kono, Masami, ('37, L. & S.), 2309 California St., San Francisco, (U. S.).
- Koyama, Isamu, ('36, Comm.), 1631 Benita St., (Hawaii).
- Koyama, John, ('38, L. & S.), 626 Clay St., Oakland, (U. S.).
- Kubose, Masao, ('36, L. & S.), 119 Magnolia, Oakland, (U. S.).
- Kubota, Robert, ('35, E. E.), International House, (U. S.).
- Kurahara, Miss Pearl, ('37, L. & S.), 137 Ardmore Road, (U. S.).
- Kushida, Tatsuo, ('38, Comm.), 1536 Shattuck Ave., (U. S.).
- Kyogoku, Miss Marii, ('36, L. & S.), 2016 Blake St., (Japan).
- Kyogoku, Miss Yuri, ('36, L. & S.), White Cotton Hotel, (Japan).
- Masuda, Tatsuro, ('38, Comm.), 881 Athens Ave., Oakland.
- Matsumoto, Miss Rose F., ('37, L. & S.), 983 Peralta Ave., (U. S.).
- Matsuoka, Miss Bessie ('37, L. & S.), 29 Eucalyptus Rd., (U. S.).
- Matsuura, Arthur, ('38, L. & S.), 2026 Blake St., (U. S.).
- Matsuura, Perry S., ('38, Pharm.), 2121 Channing Way, (U. S.).
- Matsuyeda, William H., ('38, L. & S.), 4629 Geary Blvd., San Francisco, (U. S.).
- Mayewaki, Ben, ('37, L. & S.), 576 Sycamore St., Oakland, (U. S.).

CALIFORNIA—Continued

- Migita, Nobuhiko, (Gr. For.), International House, (Japan).
- Minami, William, ('35, Comm.), 7014 Krause St., Oakland, (U. S.).
- Misumi, Juro, (No. 6, Chem.), 429 Spruce St., San Francisco, (Japan).
- Miura, Wataru, ('35, Eng.), 1714 Hearst Ave., (U. S.).
- Miyoshi, Miss Annie Y., ('36, Econ.), 2843 Forest Ave., (U. S.).
- Mizuna, George R., ('37, Chem.), 860—33rd St., Oakland, (Japan).
- Mori, Miss Mary Y., ('36, Comm.), 1103 Amador St., (U. S.).
- Mori, Nasae, ('36, L. & S.), 2312 Durant Ave., (U. S.).
- Morifuji, Harry H., ('37, Comm.), 1939 San Antonio Ave., (U. S.).
- Morimitsu, Arthur, ('36, Comm.), 60 The Uplands, (U. S.).
- Morino, Masayoshi, (Gr., Pol. Sci.), 2330 Buena, Alameda, (U. S.).
- Muramoto, Hideo, ('37, L. & S.), 55—6th St., Oakland, (U. S.).
- Murata, Yoshinori, ('36, Comm.), 1917 Francisco St.
- Murayama, Etsuko, (Gr., L. & S.), 1624 Post St., San Francisco, (Japan).
- Murayama, Makio, ('37, L. & S.), 1624 Post St., San Francisco, (U. S.).
- Najima, Haruo, ('38, Comm.), 613 Webster St., Oakland, (U. S.).
- Naka, Harry, ('35, L. & S.), 1777 Euclid Ave., (U. S.).
- Nakabayashi, Kazuo, ('38, Agr.), International House, (U. S.).
- Nakagaki, Hiromi, ('38, Eng.), 2020 Berkeley Way, (U. S.).
- Nakagawa, Miss Florence, ('37, Ed.), 1505 Laguna St., San Francisco, (U. S.).
- Nagatoshi, Miss Mary, ('36, Nurs.), 3124 Lewiston Ave., (U. S.).
- Nakahara, Miss Anna, ('38, L. & S.), 1405½ Lyon St., San Francisco, (U. S.).
- Nakamoto, Tatsuo, ('38, Eng.), 1526 Stuart St., (U. S.).
- Nakamura, Frank, ('37, Pharm.), 1736 Stuart St., (U. S.).
- Nakamura, Hiroshi, ('35, L. & S.), 1777 Euclid Ave., (U. S.).
- Nakamura, Katsumi, ('36, Pre-Med.), 2052 Bush St., San Francisco, (Japan).
- Nakano, Masa G., ('36, L. & S.), 1777 Euclid Ave., (U. S.).

CALIFORNIA—Continued

- Nakashima, Ritsu, (Gr.), 2072 Bush St., San Francisco, (U. S.).
- Negi, Miss Takako Mary, ('35, L. & S.), 2828 Prince St., (U. S.).
- Negishi, George R., (Gr., Chem.), 1631 Parker, (Japan).
- Nishimoto, Ken-Ichi, ('35, L. & S.), 1777 Euclid Ave., (U. S.).
- Nishimura, Shinze, ('36,—), 2119 Haste St., (Japan).
- Nitta, Shigeo, ('35, L. & S.), 2728 Benvenue Ave., (Hawaii).
- Noda, Miss Julia, ('36, L. & S.), 1714 Hearst Ave., (U. S.).
- Noda, Lafayette, ('38, Chem.), 821 Indian Rock Ave., (U. S.).
- Noda, Miura, ('38, L. & S.), 1500 Russell St., (U. S.).
- Nogami, Kiyomitsu, ('36, Comm.), 2301 Buena Vista, Alameda, (U. S.).
- Nomura, Masahi, ('35, Econ.), 1122 College Ave., Alameda, (U. S.).
- Nozawa, Tonoye, ('37, L. & S.), International House, (U. S.).
- Obata, Kimio G., ('36, L. & S.), 2609 Ellsworth St., (U. S.).
- Ogawa, Seido, ('37, L. & S.), International House, (U. S.).
- Ogura, Joseph H., ('37, L. & S.), 2710 Sutter St., San Francisco, (U. S.).
- Ohashi, Theodore, (Gr., Pre-Med.), 2583 Buena Vista Way, (U. S.).
- Ohashi, Miss Alice, ('36, L. & S.), 2728 Regent St., (U. S.).
- Okada, Kiyoshi, ('36, E. E.), 6025 Claremont Ave., (U. S.).
- Okamoto, Miss Ada M., ('38, L. & S.), 2912 King St., (U. S.).
- Okawa, Tokico, ('38, L. & S.), 86 Southampton Rd., (U. S.).
- Okazaki, Miss Mari, ('38, L. & S.), 1623 Pierce St., San Francisco, (U. S.).
- Okubo, Miss Mine, ('36, L. & S.), 736 Santa Barbara Rd., (U. S.).
- Omori, Miss Tomoyuki, ('37, L. & S.), 1921 Fillmore St., San Francisco, (U. S.).
- Oshima, Fred Y., (—), 5035 Wall Ave., Richmond, (U. S.).
- Ota, James H., ('38, M. E.), 1777 Euclid Ave., (U. S.).
- Sagawa, Miss Micki, ('36, L. & S.), 299 Panoramic Way, (U. S.).
- Saito, Hiroshi, ('38, L. & S.), 823 Market St., Oakland, (U. S.).

CALIFORNIA—Continued

- Saito, Morris M., ('35, Pre-Med.), 1608 Julia St., (U. S.).
- Saito, Miss Taiko, ('35,—), 823 Market St., Oakland, (U. S.).
- Saito, Miss Yaeko Anne, ('35, L. & S.), International House, (U. S.).
- Sakai, Mitsuo, ('38, Eng.), 2020 Berkeley Way, (U. S.).
- Sakanari, George, ('38, L. & S.), 4347 A Calif. St., San Francisco, (U. S.).
- Sasaki, Joe D., ('36, L. & S.), 2026 Blake St., (U. S.).
- Sato, Masa, ('36, L. & S.), 620—58th St., Oakland, (Hawaii).
- Shigezumi, George, ('37, L. & S.), 871 Sanchez St., San Francisco, (U. S.).
- Shima, Ruidge, ('35, L. & S.), 2601 College Ave., (U. S.).
- Shimokubo, Paul, ('35, Eng.), International House, (Japan).
- Shimotori, George, ('37, E. E.), 411—7th St., Oakland, (U. S.).
- Shimotori, Miss Noboko, (—L. & S.), 411—7th St., Oakland, (U. S.).
- Shinoda, Paul, ('35, Agr.), 1777 Euclid Ave., (U. S.).
- Shiota, Manzo, ('38, L. & S.), 2009 Buchanan St., San Francisco, (U. S.).
- Sonoda, Miss Margaret, ('37, L. & S.), International House, (U. S.).
- Sonoda, Miss Mary, ('35, Comm.), International House, (U. S.).
- Suda, George M., ('38, Dent.), 1777 Euclid Ave., (U. S.).
- Sueiyama, Henry I., ('36, L. & S.), 1630 Parker St., (U. S.).
- Sugiyama, Hiroshi, ('38, L. & S.), 2306 Eagle Ave., Alameda, (U. S.).
- Sueiyama, Tetsuo, ('37, L. & S.), 1812 Bush St., San Francisco, (U. S.).
- Suzuki, Harvey K., ('36, L. & S.), Cor. 10th & West Sts., Oakland, (U. S.).
- Suzuki, Richard C., ('36, L. & S.), 795—10th St., Oakland, (U. S.).
- Takagi, Noboru G., ('38, Pharm.), 2308 Claremont Ave., Alameda, (U. S.).
- Takahashi, Ernest, ('37, L. & S.), 1724 Carleton, (U. S.).
- Takao, Susumu S., ('36, L. & S.), 2033 Bush St., San Francisco, (U. S.).
- Takei, Susumu, ('38, Comm.), 3912 Telegraph Ave., Oakland, (U. S.).
- Takei, Tatsuto, ('36, L. & S.), 753 Kingston Ave., Oakland, (U. S.).

CALIFORNIA—Continued

- Takemoto, Miss Fumie, ('37, L. & S.), 682—30th St.,
Oakland, (U. S.).
- Taketa, Robert, ('37, Comm.), 1412 Geary St., San
Francisco, (U. S.).
- Takahashi, Miss Grace, ('37, L. & S.), 1724 Carleton
St., (U. S.).
- Tamura, Kosaku, (Gr., L. & S.), 2539 Fulton St.,
(U. S.).
- Tan be, Miss Emi, ('38, L. & S.), 2213 California St.,
(U. S.).
- Tanaka, George, ('37, L. & S.), 659 E. 12th St., Oak-
land, (U. S.).
- Tanaka, Miss Hiroko, ('38, Comm.), 531 Brush St.,
Oakland, (U. S.).
- Tanaka, Miss Yoshiko, ('36, L. & S.), 1009 Mariposa
Ave., (U. S.).
- Taniguchi, Tadao, ('36, Eng.), 6315 Chabot Rd., Oak-
land, (U. S.).
- Tann, Miss Yoshiko, ('38, L. & S.), 2427 Blake St.,
(U. S.).
- Tashiro, Haru, ('36, Pre-Med.), 1800 Buchanan St.,
San Francisco, (U. S.).
- Toriumi, Kaoru D., ('36, L. & S.), 1705 Carleton St.,
(U. S.).
- Tsuchiya, Takashi, ('35, Comm.), 2304 Pacific, Ala-
meda, (U. S.).
- Tsurumoto, Hajime, ('37, Comm.), 160 Southampton,
(U. S.).
- Uratsu, Hiroshi, ('37, Eng.), 2117 Channing Way,
(U. S.).
- Ushihara, Tom T., ('36, L. & S.), 1736 Stuart St.,
(Japan).
- Utsumi, Toyoji, ('37, L. & S.), 396—49th St., San
Francisco, (U. S.).
- Utsunomiya, Miss Kiyoko, ('37, L. & S.), 2912 King
St., (U. S.).
- Uyechi, Tatsu J., ('36, Chem.), 1737A Virginia St.,
(U. S.).
- Yabuki, Masao, ('37, L. & S.), 474—23rd St., Oak-
land, (U. S.).
- Yamada, George Y., ('36, Comm.), 2026 Blake St.,
(U. S.).
- Yamada, Masao, ('37, Comm.), 2516 Grove St.,
(U. S.).
- Yamagata, Miss Mary K., ('38, L. & S.), 2539 Fulton
St., (U. S.).
- Yamamoto, Miss Kikuo, ('38, Comm.), 1534 Oregon
St., (U. S.).
- Yamamoto, Masao, ('37, L. & S.), 1608 Oregon St.,
(U. S.).
- Yamamoto, Shinji, (Gr., Arch.), 1608 Oregon St.,
(U. S.).

CALIFORNIA—Continued

- Yamamura, Harold Y., ('36, L. & S.), 200 Stonewall Rd., (U. S.).
 Yamasaki, Hisato, ('37, L. & S.), 1816 Minturn St., A'ameda, (U. S.).
 Yamauchi, Paul, ('36, L. & S.), 2919 King St., (U. S.).
 Yamazaki, Tomomasa, ('36, Comm.), 1777 Euclid Ave., (Japan).
 Yanaga, Chitoshi, (—), 2521 Durant Ave., (U. S.).
 Yanaga, Miss Clara, ('35, L. & S.), 2521 Durant (U. S.).
 Yanagisawa, Kazuo, ('35, Pre-Med.), 1621 Carleton St., (U. S.).
 Yatabe, Motoko, ('38, Agr.), 835 University Ave., (U. S.).
 Yosh'oka, Ben T., ('37, L. & S.), 919 Mendocino Ave., (U. S.).
 Yuasa, Hachiro, (Gr., L. & S.), 3028 West St., Oakland, (U. S.).

University of California at Los Angeles
 (Los Angeles) 89

- Abe, George Yoshimichi, (U. S.).
 Adachi, George Toshio, (U. S.).
 Aiso, Miss Mary S., (U. S.).
 Aiso, Paul Togo, (U. S.).
 Anraku, Tatsuo, (U. S.).
 Babamoto, Toshio, Fred, (U. S.).
 Chuman, Fujio Frank, (U. S.).
 Chuman, Yemi, (U. S.).
 Eto, Jackson Kazuo, (U. S.).
 Eto, William Hisayuki, (U. S.).
 Fujikawa, Fujie, (U. S.).
 Fujioka, Miss Alice Tomiko, (U. S.).
 Fujioka, Kaoru, (U. S.).
 Fujioka, Sadamu, (U. S.).
 Fukasawa, Kiyō Cathalin, (U. S.).
 Fukunaga, Miss Kiku Alice, (U. S.).
 Fukunaga, Yujiru Jack, (U. S.).
 Furumura, Togo S., (U. S.).
 Hasegawa, Charles Satori, (U. S.).
 Hasegawa, Henry Hidehiko, (U. S.).
 Hiraoka, Yoshimi R., (U. S.).
 Hirashima, Thomas Toma, (U. S.).
 Hirota, Masahiro John, (U. S.).
 Honda, Miss Viola M., (U. S.).
 Imoto, Sunao, (U. S.).
 Iino, Sho, (U. S.).
 Inoshita, Day Hiroshi, (U. S.).
 Inouye, Torao, (Japan).
 Inui, Frank Kazuo, (U. S.).
 Itami, Akira, (U. S.).
 Jow, William Minoru, (U. S.).

CALIFORNIA—Continued

- Kadota, Yoshie, (U. S.).
 Kanegai, Masako, (U. S.).
 Kaneko, Thomas Motomi, (Japan).
 Kawashima, Mabel Takako, (U. S.).
 Koba, Tamiko, (U. S.).
 Kodama, Miss Edith, 1609 W. 36th St., (U. S.).
 Kouzumi, Miss Fumiko Florence, (U. S.).
 Komai, Khan, (U. S.).
 Kubo, Tojiko, (U. S.).
 Kumai, George Kiyoshi, (U. S.).
 Marumoto, Kenji, (U. S.).
 Matsumoto, Miss Alma K., (U. S.).
 Mimaki, Richard Hidekatsu, (U. S.).
 Mori, Yoshihira, (U. S.).
 Morikawa, Jitsuo, (Canada).
 Murakami, Kiyoshi, (U. S.).
 Murao, Miss Barbara Haruko, (U. S.).
 Murayama, Henry Hiroshi, (U. S.).
 Nagahama, John Harukichi, (U. S.).
 Naganuma, Michiko, (U. S.).
 Namamura, George N., (U. S.).
 Nakano, Kenneth Khan, (U. S.).
 Nishibayashi, Shunji, (U. S.).
 Nishikawa, Noboru, (U. S.).
 Nozaki, Kenzie, (U. S.).
 Ogawa, Masaru, (U. S.).
 Sasaki, George, (U. S.).
 Senzaki, Kazuyoshi, (U. S.).
 Shigekawa, Toy Toru, (U. S.).
 Shima, Takayoshi A., (—Pre-Med.), 1029 S. Harvard
 Blvd., (U. S.).
 Sugahara, Miss Jean Fuji, (U. S.).
 Sugahara, Roku, ('34, Econ.), 1954 Federal Ave.,
 (U. S.).
 Sugi, Tetsu, (U. S.).
 Sugihara, Hideko, (U. S.).
 Suyehara, Jimmie Shigeo, (U. S.).
 Suzukawa, Isami, (U. S.).
 Suzuki, Miss Florence S., (U. S.).
 Suzuki, Hiroshi, (Japan).
 Suzuki, Kazuko, (Japan).
 Takahashi, Alden Wataru, (U. S.).
 Takeda, Hiroshi, (U. S.).
 Tanabe, Eiji, (So., Journ.), 1104½ E. 7th St., (U. S.).
 Tanaka, Ayako, (U. S.).
 Tanaka, Togo, (U. S.).
 Toguri, Iva Ikiko, (U. S.).
 Tsuchiyama, Hisako, (U. S.).
 Tsunokawa, George Hirokozu, (U. S.).
 Unoki, Kazuo Karl, (U. S.).
 Ushijima, Totto Henry, (U. S.).
 Wakamatsu, Miss Eiko, Mary, (U. S.).
 Wakamatsu, Miss Frances, (U. S.).

CALIFORNIA—Continued

- Wakimoto, Toshio, (U. S.).
 Watanabe, Henry Ichiro, (U. S.).
 Yamaguchi, Mitsuga, (U. S.).
 Yamazaki, John Henry, (U. S.).
 Yasumi, Hideo, (U. S.).
 Yata, Tatsuo Paul, (U. S.).
 Yoshihashi, Takehiko, (U. S.).

University of Southern California
 (Los Angeles) 107

- Abe, Yonekagu, ('39, Dent.), San Bernardino, (Japan).
 Adachi, Kagumi, ('39, Arch.), 1583 W. 35th Pl.,
 (U. S.).
 Akiyama, Sumi, ('38, Arch.), Westminster, (U. S.).
 Aoyagi, Shunryu, ('35, Arch.), c/o University,
 (Japan).
 Arikawa, James Takeo, (Jr., Dent.), 1031 Crocker St.,
 (U. S.).
 Audo, Yoshitake, ('36, Arch.), 1342 Gordon, (Japan).
 Chino, Thomas T., ('36, Arch.), Chula Vista, (U. S.).
 Chogoro, Kanno, ('36, Comm.), Route 2, Box 244,
 Norwalk, (Japan).
 Fujima, Rev. Ichigu, (Sp., Arch.), c/o University,
 (Japan).
 Fujii, Ryuchi, (Gr.), Route 1, Box 191B, Venice,
 (Japan).
 Fukuoka, Miss Fumiko, (Gr., L. & S.), 621 S. Oxford
 Ave., (Japan).
 Goto, James M., ('36, Med.), 228 E. Beverly, (U. S.).
 Goto, Komao, ('37, Dent.), c/o University, (U. S.).
 Hamamura, Masami, ('35, Dent.), 1032 W. 35th,
 (Hawaii).
 Hanada, Kichiji, (Gr.), Fullerton, (Japan).
 Hara, Ernest Hideo, ('35, Arch.), 923 W. 35th St.,
 (Hawaii).
 Haruki, Takeshi, (Gr.), c/o University, (Japan).
 Hashimoto, Gerald S., ('37, Pharm.), c/o University,
 (Hawaii).
 Hayashi, Katao, ('35, Dent.), 923 W. 35th St.,
 (Hawaii).
 Hayashi, Shotoku M., (Sp., Rel.), 123 S. Hewitt,
 (Japan).
 Heyamoto, Toshiro, ('35, Comm.), c/o University,
 (Japan).
 Hifurima, Thomas T., ('38, Comm.), 568½ N. Virgil,
 (U. S.).
 Higashida, Wattow, ('36, Pharm.), 5715 Whittset St.,
 N. Hollywood, (U. S.).
 Hori, Masashi, ('36, Comm.), 3524 Folsom, (U. S.).
 Ichioka, Isutayo N., ('38, L. & S.), 115 N. Bonnie
 Beach Pl., (U. S.).
 Inouye, Joe Yuzuku, ('38, Comm.), c/o University,
 (U. S.).

CALIFORNIA—Continued

- Inouye, Jun, ('37, Comm.), c/o University, (U. S.).
 Iriye, Mort, ('36, Comm.), Route 1, Box 105-D, El Monte (U. S.).
 Ishiguro, Kei, ('35, Arch.), 1229 W. 35th St., (Japan).
 Ishii, George, ('36, Eng.), 615 Tuna, Terminal Is., (U. S.).
 Itabashi, Namiji, ('36, —), c/o University, (Japan).
 Iwata, Kaoru Frank, ('37, Eng.), 129 S. Mathews St., (U. S.).
 Kadotani, Kazuo, ('35, Comm.), 923 W. 35th St., (Hawaii), Doshisha U.
 Kagawa, Shinso, (So., Ed.), 923 W. 35th St., (Hawaii).
 Kako, Yukio, ('39, Arch.), 837 Laveta Ter., (U. S.).
 Kamei, Toshiro, ('38, Comm.), c/o University, (Hawaii).
 Kanemaru, Masao, ('38, Dent.), c/o University, (Hawaii).
 Kanco, Kazuma N., ('35, Dent.), 923 W. 35th St., (Hawaii).
 Kawachi, Risaku, (Gr., Ed.), Route 1, Box 399, Gardena, (Japan).
 Kawachika, Shinichi, ('36, Comm.), 923 W. 35th St., (U. S.).
 Kawaji, Shunpaku, ('38, Comm.), c/o University, (Japan).
 Kikunaga, Jitsuo Joe, ('37, Comm.), 305 E. 2nd St., (U. S.).
 Kobayashi, George, ('37, Comm.), El Centro, (U. S.).
 Kumabe, Iwao, ('37, Comm.), c/o University, (U. S.).
 Kumabe, Noboru Paul, ('36, Comm.), 3430 McClintock, (U. S.).
 Kusayanagi, Masoko, ('36, Arch.), 752 Micheltorena St., (U. S.).
 Kuwata, Ken, ('35, Dent.), c/o University, (Hawaii).
 Makino, Yi Tom, ('35, Arch.), 119 S St. Louis St., (U. S.).
 Mansho, Fred Fumio, ('36, Pharm.), 4338 N. Y. Ave., (U. S.).
 Masuoka, Masaru A., ('37, Pharm.), 1016½ S. Catalina, (U. S.).
 Matsu, Yeiko, ('38, Pharm.), Elko, Nev., (U. S.).
 Matsuo, Kehei, (Gr.), c/o University (Japan).
 Morihara, Edward T., ('38, Pharm.), 923 W. 35th St., (U. S.).
 Moroaka, John K., (Jr., Comm.), Route 3, Box 797, Compton, (U. S.).
 Nagai, Kimie, ('38, Arch.), Route 2, Box 282c El Monte, (U. S.).
 Naganuma, Michiko, (Gr., Mus.), 1688 W. 36th St., (U. S.).
 Nagao, Chitosey, ('36, Mus.), 937 Towne Ave., (U. S.).
 Naitu, Miss Lois Aiko, ('37, Arch.), El Centro, (U. S.).

CALIFORNIA—Continued

- Nakaji, Yoshi, ('35, Dent.), 625 Tuna St., Terminal Is., (U. S.).
- Nakamura, Yoshio I., ('36, Dent.), 247 Cannery St., (U. S.).
- Nishida, Tom T., ('36, Arch.), 3430 McClintock, (U. S.).
- Nodera, Isamu, (Gr.), c/o University, (Japan).
- Nowaki, Kenneth A., ('35, Dent.), 2331 Wall St., (U. S.).
- Nozaki, Masao, ('36, Comm.), 2015—4th Ave., (Japan).
- Onaka, Takeji, ('35, Eng.), 1770 W. 35th St., (U. S.).
- Osaki, George, ('39, Arch.), 1923 N. J., (U. S.).
- Osuni, Paul S., (Gr., Rel.), c/o University, (Hawaii).
- Ota, Tetsuo F., ('35, Arch.), 248 E. 1st St., (Japan).
- Ota, Tosuke, (Sp.) 1333 Locust Ave. Long Beach, (Japan)
- Otani, William, ('38, Comm.), 5630 Tryon Rd., Hollywood, (U. S.).
- Ozaki, Miss Elsie T., ('37, Comm.), 1076½ W. 35th Pl., (U. S.).
- Sato, Hiroshi, ('36, Ed.), c/o University, (Japan).
- Serisawa, Koko, (Gr., Ed.), Box 544, Moneta, (U. S.).
- Shgekawa, Sakaye ('36 Arch.) 4625 Hooper Ave., (U. S.).
- Shimizu, Kazu, ('38, Arch.), 2923 S. Western, (U. S.).
- Shimizu, Miss Masako Martha, ('38, Arch.), 2923 S. Western, (U. S.).
- Shingu, Shuzo L., (Gr.), Box 319, Moneta, (Japan).
- Shinno, George M., ('35, Arch.), 1426 Fries Ave., Wilmington, (U. S.).
- Shinoda, Shiho, ('38, Arch.), c/o University (Hawaii).
- Sonoda, George, ('36, Pharm.), 1325 E. 99th St., (U. S.).
- Tada, Donald K., ('35, Pharm.), 923 W. 36th St., (U. S.).
- Tarukuji, Momoru, ('35, Arch.), 923 W. 35th, (U. S.).
- Takahashi, Kyojito, (Gr.), c/o University, (Japan).
- Takahashi, Seytsu S., (Gr., Rel.), 133 N. Central Ave., (Japan).
- Taketa, Edsworth Hiroshi, ('36, Dent.), 923 W. 35th St., (Hawaii).
- Takeno, Roy M., ('36, Journ.), 231 S. Juanita, Redondo Beach, (U. S.).
- Takeuchi, Frank Sei, ('38, Pharm.), 756 Tuna, (U. S.).
- Takii, Arthur, ('37, Dent.), 682 W. 9th St., San Pedro, (U. S.).
- Tamura, Tahei, ('37, Comm.), 128 E. 1st St., (Japan).
- Tamura, Takatoshi, ('36, Arch.), Route 1, Box 165, Redondo Beach, (U. S.).
- Tanase, Miss Florence H., ('38, Comm.), Holtville, (U. S.).
- Tasumoto, George, ('38, Dent.), 1004 Clare, Whittier, (U. S.).

CALIFORNIA—Continued, COLORADO

- Tokushige, Hiroo, ('37, Comm.), 718 Gendora, Puente,
(U. S.).
Tom, Richard, ('38, Arch.), 1458 W. 37th St., (U. S.).
Toshujuki, John Y., ('36, Pharm.), 2197 W. 29th Pl.,
(U. S.).
Toyama, Henry Y., ('38, Comm.), 1371 W. 36th Pl.,
(U. S.).
Uba, Katsumi, ('38, Dent.), 1007 E. 21st St., (U. S.).
Wakukawa, Katsushiro, ('37, Arch.), 126 S. Savannah,
(Japan).
Watanabe, Hesako, (Gr.), 4907 Maplewood Ave.,
(U. S.).
Watanabe, Miss Ruth T., ('36, Mus.), 1020 E. 8th St.,
(U. S.).
Watanabe, Yoshio, ('36, Comm.), 716 E. Green, Pasa-
dena, (U. S.).
Yamashiro, Masami, ('37, Dent.), c/o University,
(U. S.).
Yamayata, Susamu, ('36, Dent.), c/o University,
(U. S.).
Yamasaki, Kimi, ('36, Arch.), 1128½ Cahuenga, Holly-
wood, (U. S.).
Yamazuchi, Ernest, ('37, Pharm.), Madera, (U. S.).
Yanase, Stanley H., ('38, Dent.), c/o University,
(U. S.).
Yuba, Arthur T., ('37, L. & S.), 544 Vernon Ave.,
Venice, (U. S.).

University of San Francisco (San Francisco) 2
Shimizu, Seihei, (Unres. Course), c/o University.
Tsukamoto, Shigeo, (Pre-Legal), c/o University.

Whittier College (Whittier) 3

- Fukushima, David, (—), 149 S. 10th St., Montebello,
(U. S.).
Fukushima, Paul, (Ent.), 149 S. 10th St., Montebello,
(U. S.).
Fukushima, Miss Ruth, (Rel. Phil., Soc.), 149 S.
10th St., Montebello, (U. S.).

COLORADO

Colorado School of Mines (Golden) 1

- Watanabe, S., (Sr., Met.), 1942 Market St., (Japan),
McKinley H. S.

University of Colorado (Boulder) 9

- Furusho, George Ryoji, (A. & S.), 1044—13th St.,
(U. S.).
Harada, Mitsu Harry, (A. & S.), 1004—13th St.,
(U. S.).
Kobayashi, Tommy, (Pharm.), 994—14th St., (U. S.),
Manual Tr. H. S.

COLORADO—Continued, CONN., D. C., HAWAII

- Noguchi, Miss Suzan Lillian, (A. & S.), 750—12th St.,
(U. S.).
Ozamoto, Isamu, (Med.), 1137 Colorado Blvd., (U. S.).
Sakaguchi, Shimpei, (Med.), 1162—12th St., (U. S.).
Umemoto, Hart Haruto, (Eng.), 1452 Elizabeth,
(U. S.).
Watanabe, Michiro, (A. & S.), 1010 Grandview.
Yamaguchi, Ralph Tadashi, (Law), 940—14th.

University of Denver (Denver) 12

- Amano, Miss Alice, (Fr., Comm.), 625—15th St.,
(U. S.).
Inouye, John, (Fr., Comm.), 1942 Market, (U. S.).
Inouye, Roy Yoshinori, (Fr., Eng.), 1942 Market,
(U. S.).
Ito, Yoshi, (Fr., Arts), 2014 Larimer, (U. S.).
Iwanaga, Miss Polesta, (Fr., Eng.), Littleton, (U. S.).
Kaiharu, Fred Tard, (Fr., Arts), 4116 Valjejo St.,
(U. S.).
Kojiua, Yutaka, (So., Arts), 1929 Larimer St., (U. S.).
Koshi, George, (Fr., Arts), 28th & Curtis Sts.,
(U. S.).
Takamine, Tol, (Fr., Comm.), 2240 Tremont St.,
(U. S.).
Tomita, Miss Yone Ann, (So., L. A.), 2801 Curtis,
(U. S.).
Tsumura, Nobuzane, (Gr., Arts), 1942 Market, (Japan).
Uemura, Miss Lillian, (So., L. A.), 2801 Curtis,
(U. S.).

- Western State College of Colorado (Gunnison) 1**
Maruyama, Paul, (A. B., Econ.), Colorado Hall,
(Japan).

CONNECTICUT

Wesleyan University (Middleton) 1

- Yoneda, Kiyotaka, (B. A.), c/o University, (Japan),
Kwansei Gakuin.

Yale University (New Haven) 1

- Moriyama, —, (Pub. Health), 43 South St., (Japan).

DISTRICT OF COLUMBIA

George Washington University 1

- Miho, Katsuro, (—), 1614 Eye St., N.W., (Hawaii),
Hiroshima.

National University 1

- Maruyama, Kunio, (M. A.), c/o University, (Japan).

HAWAII

- (Names and all information of students in Hawaii
are filed in J. S. C. A. National Office.)

IDAHO, ILLINOIS

IDAHO

College of Idaho (Caldwell) 5

Hashitani, Roy, (A. B.), Route 4, Nampa, (U. S.).

Nishioka, Bill, (—), Route 2, (U. S.).

Suyehira, Henry, (A. B.), 1720 Blaine St., (U. S.).

Takeuchi, Paul, (—), 1720 Blaine St., (U. S.).

Uyematsu, Miss Martha, (A. B.), Box 325, (U. S.).

Northwest Nazarene College (Nampa) 1

Fujino, Chester, (Sr., L. A.), c/o College, (Japan),
Nishaken H. S.

ILLINOIS

Armour Institute of Technology (Chicago) 1

Nakayama, George Isao, (—), 3423 S. Michigan Ave.,
(Hawaii).

Baptist Missionary Training School (Chicago) 2

Mori, Miss Jeanne, 2969 Vernon Ave.

Sese, Miss Shigeko, 2969 Vernon Ave.

Bradley Polytechnic Institute (Peoria) 1

Takemoto, Haruta, (Eng.), Rebecca Pl.

Chicago Medical School (Chicago) 2

Hamamoto, David M., (Sr., Med.), 2129 W. Jackson
Blvd., (Hawaii).

Yamamoto, Fred J., (—), 2119 W. Jackson Blvd.,
(Hawaii).

Chicago Technical College (Chicago) 1

Katsuyama, Harry M., (—Arch.), 747 E. 36th St.,
(Japan).

Knox College (Galesburg) 1

Oda, Tadayuki, (Jr., B. A.), Seymour Hall, (Japan).

Loyola University (Chicago) 4

Ito, Masayoshi, (Med.), 1804 W. Congress St.

Kaneko, Yoshio H., (Dent.), 2119 W. Jackson Blvd.,
(Hawaii).

Natsui, Miss Dorothy S., (Med.), 2826 Jackson Blvd.,
(Hawaii), Marui H. S.

Uyeda, Stanley T., (Dent.), 2917 W. Jackson Blvd.,
(Hawaii).

National College of Education (Evanston) 2

Kunugi, Miss Yoshiko, (Kgn. Elm.), 90 Kedzie Ave.,
(Japan).

Uchimura, Miss Yuriko, (Kgn. Elm.), 4000 Lake Park
Ave., (U. S.).

Northern Baptist Theological Seminary
(Chicago) 1

Tsuchiya, Kurao, (Gr., Theol.), 3040 W. Washington Blvd., (Japan).

Northwestern University (Evanston) 3

Hagiwara, Hirato, (L. A.), 360 Locust St., Chicago, (Japan).

Ishizaki, S., (Gr.), 1251 Wilson Ave., (Japan).

Matzuzawa, Dr. Daikichi, (Med.), Michael Reese Hospital, (Japan).

Seabury-Western Theological Seminary
(Evanston) 1

Ochiai, Augustine Yoshitsugu, (Theol.), 600 Haven St., (Japan).

**CABIN AND TOURIST CABIN
TO JAPAN**

from Seattle, Wash.; Vancouver, B. C.
to Japan, China and the Philippines

Unusual comfort on the new Cabin and Tourist-Cabin motor liners Hikawa Maru, Hiye Maru and Heian Maru. Also regular sailings from Portland, Ore. to the Orient. Regular sailings from San Francisco and Los Angeles via Honolulu, First-Class, Cabin, Second-Class and Tourist-Cabin.

N. Y. K. LINE
(JAPAN MAIL)

New York: 25 Broadway; San Francisco: 551 Market St.; Seattle: 1404 Fourth Ave.; Chicago: 40 N. Dearborn St.; Los Angeles: 605 S. Grand Ave., or any Cunard White Star Limited office. Consult local tourist agent. He knows.

University of Chicago (Chicago) 10

Ando, Miss Toshimi, (Gr., Chem.), 1522 Hyde Park Blvd., (Japan).

Hayashi, Dr. Rei, (Anat.), 1414 E. 59th St., (Japan),
Tokio Jikei Med. C.

Hino, Aiko, (—), 5648 Harper Ave., (U. S.), Hyde Park H. S.

Idaka, T., (L. A.), 747 E 36th St., (U. S.)

ILLINOIS—Continued, INDIANA

- Ito, Miss Eileen May, (Art), 1017 E. 54th St., (Japan), Hyde Park H. S.
 Ito, Miss Elizabeth Carol, (Germanic Lit.), 1017 E. 54th St., (U. S.), Hyde Park H. S.
 Kano, Riho, (Econ.), 1414 E. 59th St., (Japan), Shizuoka Koto Gakko.
 Kasuga, Katsuno, (Gr., Anth.), 5544 Broadway, (Japan), Maeiji U.
 Kanai, Matsukichi, (Med.), 3026 California Ave., (Hawaii), Northwestern U.
 Maeyama, Chiyo, (Art & Mus.), 2020—72nd Pl., (U. S.), Hyde Park H. S.
 Ogata, Dr. Tomio, (Immunology), 1414 E. 59th St., (Japan), Tokyo Imperial U.
 Otsuka, Masashi, (Med.), Snell Hall, (Japan).
 Sakakibara, Raymond Reiichi, (Gr., Soc.), 1414 E. 59th St., (Japan), Hosei U.
 Shiga, Kohei, (Phys.), 1414 E. 59th St., (Japan), Tokyo Imperial U.
 Uyeno, Naozo, (Gr., Engl. Lit.), 5757 University Ave., (Japan), Doshisha U.
 Watanabe, Tetsui, (Med.), 1414 E. 59th St., (Hawaii).
 Watanabe, Toshihisa, (Med.), Hitchcock Hall, (Japan).
 Watanabe, Yisamu, (Zool.), 1414 E. 59th St., (Japan), Tokyo Imperial U.
 Yanagida, H., (Gr., Chem.), 747 E. 36th St., (Japan).

University of Illinois (Champaign) 4

- Kashihara, Fujio, (Uncl.), 701 W. Illinois, (U. S.).
 Kubota, Howard H., (—), 601 E. Healey.
 Nakamura, F. I., (An. Hus.), 1104 W. California.
 Onodera, Kenji, (—), 601 E. Healey, (Hawaii).

INDIANA

Butler University (Indianapolis) 1

- Funai, Richard Toshio, (L. A. & S.), Men's Union, (Hawaii).

Earlham College (Richmond) 2

- Bessho, Miss Setsuko, (A. B.), c/o College, (Japan).
 Tadokoro, Shigeru, (Sr., A. B.), c/o College, (Japan), Teachers Training S.

Indiana University (Bloomington) 2

- Ando, Kaoru, (Bus.), 314 N. Washington, (Japan), Tokyo Higher Normal S.
 Miyaki, Yoshifumi, (P. G.), 202 E. 5th St., (Japan).

Purdue University (Lafayette) 2

- Imada, J. H., (3, M. E.), 322 N. Salisbury, (Hawaii).
 Yokochi, C., (3, C.), 322 N. Salisbury, (Hawaii).

IOWA, KANSAS, KENTUCKY

IOWA

Iowa State College (Ames) 2

Ige, Yuichi, (An. Hus.), 2184 L. Way, (Hawaii).
Yamashiro, Zengei Yoshio, (Jr., Vet. Med.), 2184 L.
Way, (Hawaii).

Simpson College (Indianola) 1

Takehara, Miss Helen Kiyoko, (L. A.), Mary Berry
Hall, (Hawaii).

State University of Iowa (Iowa City) 2

Kikuchi, Yuzuru, (3-P), 611 S. Clinton, (Hawaii).
Sakai, Toru, (—), 611 S. Clinton St., (Hawaii).

KANSAS

Baker University (Baldwin City) 1

Kawai, Tadashi, (Sr., L. A.), c/o University, Old
Science Hall, (Japan), Buzan H. S.

Kansas City-Western Dental College (Kansas City) 4

Chikasue, R. S., (Dent.), 920 Forest.
Miura, Shigeru, (Dent.), c/o College.
Tabata, I., (—), c/o College, (Hawaii).
Tsuda, Yoshio, (Jr., Dent.), 5521 Mission Dr.,
(Hawaii).

Kansas State College of Agr. and App. Sci. (Manhattan) 1

Nomura, Paul, (Vet. Med.), 358 N. 15th St., (Hawaii).

University of Kansas (Lawrence) 2

Hamaisha, Harry Takashi, (Jr., Bus.), 1229 Ohio St.,
(Hawaii), McKinley H. S.
Matsumoto, Shirowo, (Sr., Eng.), 1244 Ohio, (Hawaii).

University of Wichita (Wichita) 1

Shimamoto, Miss Tae (L. A.), 1704 N. Holyoke,
(Japan).

KENTUCKY

Southern Baptist Theological Seminary (Lexington) 1

Kuriya, Hiroji, (—), 2625 Lexington Rd., (Japan).

University of Louisville (Louisville) 2

Hata, Richard, (Med.), 201 E. Chestnut St., (Hawaii).
Ohtani, Masato, (Med.), 223 E. Gray St., (Japan).

LOUISIANA

LOUISIANA

Tulane University (New Orleans) 9

Kainuma, Richard Toshio, (Fr., Med.), 716 Lowerline St., (Hawaii).

Kawaoka, Wallace Shinobu, (So., Med.), 916 Lowerline St., (Hawaii).

Kimata, Harold Tamaki, (Jr., Med.), 1902 Canal St., (Hawaii).

Kimura, Minoru, (Jr., Med.), 244 S. Claiborne Ave., (Hawaii).

Kobayashi, Dr. Norman Takashi, (Gr., Med.), 116 S. Johnson St., (Japan).

**UNUSUAL LOW RATE
TO JAPAN VIA NEW ORLEANS**

**From Eastern and Mid-Western Cities
in Combination with Greyhound Bus**

**Comfortable Accommodations on
New Motor Vessels**

**Regular Monthly Sailings from
New Orleans and Los Angeles**

O. S. K. LINE

New York: 17 Battery Place

New Orleans:

Los Angeles:

Whitney Bank Bldg.

111 W. 7th Street

Chicago: 333 N. Michigan Ave.

Miyamoto, Mitsuo, (Fr., Med.), 916 Lowerline St., (Hawaii).

Nishigawa, Toru, (Fr., Med.), 916 Lowerline St., (Hawaii).

Tomoguchi, George Yoshikatsu, (Jr., Med.), 1431 Tulane Ave., (Hawaii).

Yasuda, Hiroshi, (Jr., Med.), 1005 Lowerline St., (Hawaii).

MARYLAND, MASSACHUSETTS

MARYLAND

Johns Hopkins University (Baltimore) 2

Harashima, Dr. Susamu, (Hygiene), 1513 N. Broadway.
Kawakami, Dr. Riiti, (Hygiene), 1910 Mt. Royal Terr.

Westminster Theological Seminary (Westminster) 1

Oda, Tsukasa, (Theol.), c/o Seminary, (Japan),
Aoyama Gakuin.

MASSACHUSETTS

Atlantic Union College (South Lancaster) 1
Miyashiro, Ronald, (B. A.), c/o College, (Japan).

Boston University (Boston) 2

Kasai, Masao, (Theol.), 72 Mt. Vernon St., (Japan).
Mukaibo, Nagahide, (Theol.), 72 Mt. Vernon St.,
(Japan), Aoyama Gakuin.

Clark University (Worcester) 1

Ishii, Ryoichi, (Gr.), 166 Woodland St.

Harvard University (Cambridge) 3

Kawanishi, Sei Kogioku, (Arts & Sci.), 1933 Common-
wealth Ave., Brighton.
Kyoji, Tsutsumi, (Gr., Arts & Sci.), 12 Sumner Rd.
Tsuru, Shigeto, (Coll.), Adams GO43, (Japan).

Massachusetts Institute of Technology (Cambridge) 8

Isobe, Taro, (—), 329 Park St., Roxbury, (Japan).
Kawai, Juntaro, (—), 288 Commonwealth Ave.,
Boston, (Japan).
Mikimoto, Yoshio, (—), M. I. T. Dormitory, (Japan).
Miyazawa, Kiko, (—), 54 Garfield St., (Japan).
Nakamura, Hirotaro, (—), 367 Harvard St., (Japan).
Takahashi, Ichiro J., ('37, E. E.), c/o M. I. T., Dor-
mitory, (Hawaii).
Tsukada, Hideo, (—), 237 St. Paul St., Brookline,
(Japan).
Yamamoto, Takoshi, (—), 37 Langdon St., (Japan).

Mt. Holyoke College (South Hadley) 1

Nakayama, Miss Yoshi, (Fr.), c/o College, (U. S.).

Northeastern University (Boston) 1

Sakamoto, Makoto, (Eng.), 89 Oak St., Dedham,
(Japan).

Springfield College (Springfield) 1

Oka, M., (Soc. Sci.), c/o College, (Hawaii).

Wellesley College (Wellesley) 1

Hirooka, Miss Miye-ko, (Bot.), Davis Hall, (Japan).

MICHIGAN

MICHIGAN

Battle Creek College (Battle Creek) 1
Enomoto, Miss Cecelia, (Phys. Ed.), Kellogg Hall
Dormitory, (Hawaii).

Hope College (Holland) 1
Hidaka, Tsuguo, (Sr., Sci.), c/o College, (Japan),
Takato H. S.

Kalamazoo College (Kalamazoo) 1
Shirai, Noboru, (L. A.), Williams Hall, (Japan).



**The Japanese
Times**

Semi-Weekly

Established 1911

Shozo Midzutani,
Publisher

The Japanese-American
Daily Cable Service

Subscription Rates:

5c a copy, \$5.00 per year
postage included

12 W. 17th Street, New York

Telephones: WAtkins 9-2909—2910

University of Michigan (Ann Arbor) 5
Atsumi, John S., (Gr.), 1109 E. University, (U. S.).
Kashiwa, Shiro, ('35, Law), Lawyer's Club, (Hawaii).
Kobayashi, Noboru, ('35, Arch.), 201 N. Thayer,
(Hawaii).
Masuhara, Robert T., ('35, Med.), 201 N. Trayer
(Hawaii).
Ohara, George Yoshio, ('36, Eng.), 201 N. Thayer,
(Hawaii).

Wayne University (Detroit) 1
Ohno, William, (Bus. Adm.), 11681 Yellowstone Ave.,
(Japan).

MINNESOTA, MISSOURI

MINNESOTA

University of Minnesota (Minneapolis) 9

- Ariyama, Kyozo, ('35, Phys.), 816 Aurora Ave.,
(Japan).
Kitagawa, Kiyoshi, (Bus.), 4029 Lyndale St., (U. S.).
Kitagawa, Miss Nobu, (L. A.), 4029 Lyndale St.,
(U. S.).
Kometani, John T., (Med.), 513 Washington Ave.,
S. E., (Hawaii).
Nitta, Henry, ('37, Eng.), 417 S. E. Walnut, (Hawaii),
McKinley H. S.
Sakamoto, Wallace, ('35, Med.), 710 S. E. Essex,
(Hawaii).
Seto, Masaharu, (Pre-Med.), 513 Washington Ave.,
S. E., (U. S.).
Tanaka, Roy K., (—), 312 Walnut, S. E., (Hawaii).
Uyenovanna, Hidekzu, (—), 513 Washington Ave.,
S. E., (Hawaii).

MISSOURI

School of Mines and Metallurgy (Rolla) 1

- Ishiguro, Hachiro, (Mine Eng.), 300 W. 9th, (Hawaii).

JAPANESE MEALS



陽太

TAIYO

148 WEST 65TH STREET
NEW YORK CITY

Telephone: SUsquehanna 7-9372
TRafalgar 7-0042

MISSOURI—Continued

University of Missouri (Columbia) 3

Iwatate, Ichiro, (Journ.), 714 Missouri, (Japan).
Matsuda, Morita, (Arts), c/o University, (Japan).
Miyaki, Yoshifumi, (Gr.), 203 South 6th St., (Japan).

The Principia (St. Louis) 4

Matsukata, Haru, (—), c/o school, (Japan).
Matsukata, Naka, (—), c/o school, (Japan).
Matsukata, Tane, (—), c/o school, (Japan).
Takaki, Sada, (—), c/o school, (Japan).

Washington University (St. Louis) 5

Kanda, Robert T., (Med.), 4949 Forest Park Blvd.,
(Hawaii).
Kusunoki, Clarence J., (Med.), 4949 Forest Park Blvd.,
(Hawaii).
Ogawa, Robert Nobuichoshi, (—), 4949 Forest Park
Blvd., (Hawaii).
Takenaka, Kameichi, (—), 4949 Forest Park Blvd.,
(Hawaii).
Tanabe, Miss Hana, (Dent.), McMillan Hall.

William Jewell College (Liberty) 1

Shimoda, Robert Kazumi, (—), c/o College, (Japan).

Greetings to Japanese Students

When You Are in New York City
Enjoy Japanese Meals at



Miyako

340 WEST 58th STREET
NEW YORK CITY

Telephone COLUMBUS 5-0577

NEBRASKA, NEW JERSEY

NEBRASKA

Creighton University (Omaha) 4

Fujii, Koichi Kenneth, (Med., 3), 2206 Douglas, (—),
U. of Redlands.

Katsuki, Robert Yoshihika, (Med., 4), 2532 Cass St.

Suzuki, Mitsuo Paul, (Med. 3), 2206 Douglas, (—),
C. of Puget Sound.

Takanaga, Robert Toshiwo, (Med., 1), 2623 California
St., (Japan).

University of Nebraska (Lincoln) 4

Inouye, Lee Masayashi, (B. A.), c/o Y. M. C. A.,
(Japan).

Katagiri Brothers

Importers of

Oriental Food Products

Books and Magazines

Railway and Steamship Tickets

Forwarding Agents

224 East 59th Street

New York City

Phone Wickersham 2-9344—9345

Nagai, Sunao, (Eng.), 2925 Sumner St.

Ugai, Fred, (B. A.), 1548 N. 14th St., (Japan).

Yoshikawa, George, (Dent.), 2416 S. 10th St., (Japan).

NEW JERSEY

Drew University (Madison) 2

Sacon, Yoshi-Shige Herman, (B.D.), c/o University,
(Japan), Aoyama Gakuin.

Tagawa, Miss Takae, (Theol.), c/o Seminary, (Japan).

Princeton Theological Seminary (Princeton) 1

Takeda, Kaichi, (—), 405 Alexander Hall.

NEW JERSEY—Continued, NEW YORK

Princeton University (Princeton) 4

Hirata, Harold Yoshiomi, (Gr.), 18 Vandeventer,
(Hawaii).

Konoye, Fumitaka, ('38, Engl.), c/o University,
(Japan).

Morikawa, Kiyoshi, (Gr., Chem.), Graduate College.

Terashima, M., ('35,—), c/o University, (Japan).

TOKYO TEI

*Famous Sukiyaki Restaurant
in New York*

76 WEST 47th STREET

NEW YORK CITY

Telephone: LOngacre 5-8237



Kuwayama & Co., Inc.

76 WEST 47th STREET

NEW YORK CITY

JAPANESE FOOD PRODUCTS

BOOKS AND MAGAZINES

ORIENTAL JEWELRY — ART GOODS

NEW YORK

Auburn Theological Seminary (Auburn) 4

Chinen, Theodore K., (Theol.), Morgan Hall, (Hawaii).

Iino, David, (Theol.), Morgan Hall, (Japan).

Katsuyama, Yasutaro, (Sr., Theol.), c/o Seminary,
(Japan), Koshisha U.

Kuroda, Andrew Yoshinobu, (Theol.), Morgan Hall,
(Japan).

Biblical Seminary in New York (New York City) 3

Himeno, Masa Hero, (Theol.), 235 E. 49th St.,
(Japan).

(Established 1900)



The Japanese American
"News and Views of Japanese"
Published Weekly
Japanese and English

NIPPON PUBLISHING Co.
Y. E. Muraoka, *Editor*

Offices of Japanese American
216 E. 45th St., New York
Tel. MUrray Hill 2-6242

Branch Offices:

Chicago	Los Angeles	London
San Francisco	Tokyo	Miami

Subscription Rates:

1 year	6 months	3 months
\$5.00	\$2.50	\$1.25

NEW YORK—Continued

Mitani, Masatane, (Theol. III), 235 E. 49th St.,
(Japan), Aoyama Gakuin.
Sugimoto, Noboru, (Rel. Ed.), 235 E. 49th St.,
(Japan).

Columbia University (New York City) 23

Akagi, Mrs. Yoshi, (T. C.), 174 Nagle Ave., (Japan).
Fukuzawa, En-Ichi, (—), (Japan).
Haoka, Asae, (T. C.), c/o Kaufman, 625 Park Ave.,
(Japan).
Matsuda, M., (Univ.), c/o Yokohama Specie Bank,
120 Broadway, (Japan).
Matsu, Shoji, (Bus.), 323 W. 108th St., (Japan).
Matsushima, Sumi, (Univ.), 1250 Grand Concourse,
(Japan).
Miura, Miss Sada, (T. C.), 500 Riverside Dr., (Japan).
Miyana, Miss Shizue, (T. C.), 500 Riverside Dr.,
(Japan).
Miyazaki, Rene Akira, (Univ.), 500 Riverside Dr.,
(Japan).
Miyazaki, Yuzo, (T. C.), 524 W. 123rd St., (Hawaii).
Morikawa, K. (Chem.), c/o Princeton Univ., N. J.,
(Japan).
Morimura, Yoshiko, (Univ.), 270 Convent Ave.,
(Japan).
Ono, Tatsuo, (Gr.), 323 W. 108th St., (Japan).

Nippon Rihatsu-kan

100 WEST 43rd STREET

NEW YORK CITY

Room 205

NEW YORK—Continued

- Sakamaki, Shunzo, (Gr.), 509 W. 121st St., (Hawaii).
Shirai, Masahi, (Univ.), (Japan).
Suzuki, Kazumi, (Gr.), 500 Riverside Dr., (Japan).
Yamada, Herman Henry, (Univ.), 11 Vermilyea Ave.,
(Japan).
Yamada, Tadayoshi, (Gr.), 176 Washington Park,
Brooklyn, N. Y., (Japan).
Yamamoto, Saburo, (Univ.), 120 Broadway, (Japan).
Yamawaki, Chizuko, (Ext.), 290 Riverside Dr.,
(Japan).
Yasumori, M., (Bus.), 500 Riverside Dr., (Japan).
Yoshimaru, Giroku, (Univ.), Bank of Taiwon, Ltd.,
165 Broadway, (Japan).
Yositizumi, Minoru, (Univ.), 165 Broadway, (Japan).

Cornell University (Ithaca) 5

- Asai, George Napoleon, ('38, B.S.), Box 221, Kline
Rd., (U. S.).
Asai, Miss H. N. ('36, Agr.), Route 2, Box 221, Kline
Rd., (U. S.).
Asai, K. W., ('36, Agr.), Route 2, Box 221, Kline
Rd., (U. S.).
Asai, Miss M. V., ('36, Agr.), Route 2, Kline Rd.,
(U. S.).
Takase, Mr. and Mrs., (—), 609 E. State.

New School for Social Research (New York City) 1
Fukusato, Jisaku, (Econ.), 323 W. 108th St., (Japan),
Waseda U.

New York Institute of Photography
(New York City) 1

Hata, George, (Photo.), Cedar Lane, Ozone Park, L. I.

Japanese Methodist Episcopal Church and Institute

Pastor: Rev. T. Komuro

323 West 108th Street, New York City

Telephone ACademy 2-9774

LOCATION: Between Broadway and Riverside Drive—Several minutes' walk to Columbia University—fifteen minutes' ride to Downtown—Convenient Subway connections.

MEETINGS: Sunday Service—Sunday School—Language School—Prayer Meetings—Young People's Society—Seiwakai (Ladies' Aid Society)—Lectures and Discussion—Social Gatherings.

EQUIPMENT: Library: books, magazines and newspapers—Amusements—Dormitory—Dining Room.

ACTIVITIES: Employment Agency—Travelers' Guide—Personal Attention on any request.

New York Post Graduate Medical School
(New York City) 1

Yamashita, Dr. Takeo, (Gynecology), 151-10—35th Ave., Room 2-J, Hillcrest Apts., Flushing, L. I., (Japan).

New York University (New York City) 3

Isomura, Fumio, (L. A.), 500 Riverside Drive, (Japan).
Kosubuchi, Sojiro, (Comm.), 323 W. 108th St., (Japan).
Miyakawa, Takeo, (Gr., Bus.), 500 Riverside Drive, (Japan).

Pratt Institute (Brooklyn) 1

Tanaka, Frank W., (Chem. Eng.), 9 W. 98th St., (Japan).

NEW YORK—Continued, N. C., O., OKLA.

Rochester Athenaeum & Mechanics Institute
(Rochester) 1

Matsuoka, Miss Fuku, (—Int. De.), 102 Spring St.,
(Japan), Kyouku Jogokko.

Syracuse University (Syracuse) 1

Otake, Masaru, (Gr., L.A.), 725 Ostrom Ave.,
(Japan), First S. of Foreign Lang.

Union Theological Seminary (New York City) 2

Akamatsu, Alfred Saburo, (Theol.), 600 W. 122nd St.,
(Japan).

Matsumoto, Tsuyoshi, (Sacred Mus.), 600 W. 122nd
St., (Japan).

NORTH CAROLINA

Duke University (Durham) 1

Inagaki, Taro, (Pol. Sci. & Hist.), 304 House B,
Duke Sta.

Guilford College (Guilford College) 1

Kumagai, Naotada, (L. A. Econ.), c/o College, (Japan).

OHIO

Oberlin College (Oberlin) 1

Yoshida, Ryukichi, (Theol.), Theological Quad.,
(Japan).

Ohio Wesleyan University (Delaware) 1

Kurihara, Kenneth, (Jr., B.A.), 12 E. Lincoln,
(Japan), Hokkai Mid. School.

University of Cincinnati (Cincinnati) 2

Sasaki, Yasuo, (Gr.), Memorial Dormitory, (Japan).
Tamura, Joseph, (Gr.), 258 Erkenbrecher Ave., (U. S.).

University of Toledo (Toledo) 1

Wada, Miss Dorothy, (A. & S.), 3370 Parkwood Ave.,
(U. S.).

Wittenberg College (Springfield) 2

Sato, Miss Masako, (Arts), Ferncliff Hall, (Japan).
Shinowara, George, (Arts), Myers Hall, (U. S.),

OKLAHOMA

University of Oklahoma (Norman) 1

Setsubo, Kobayashi, (Arts & Sci.), Robertson Hall,
(Hawaii).

OREGON

OREGON

Albany College (Albany) 1

Shiogi, Miss Mary, (Fr., L.A.), 2148 N. Rillingsworth St., Portland, (U. S.).

Columbia University (Portland) 1

Kumura, Toshio, (Bus. Adm.), 208 N. W. 3rd Ave.

North Pacific College of Oregon (Portland) 11

Banno, Edward, (Dent.), 216 N. W. 3rd Ave., (U. S.).

Fujinaka, George, (Dent.), c/o College, (U. S.).

Hirota, Mitsuzo, (Pharm.), c/o College, (Japan).

Kiyohira, Leo U., (Pharm.), c/o College, (U. S.).

M'ki, Alvin Liichi, (Dent.), S. P. Hotel, (Hawaii).

Nishio, Mariko, (Pharm.), c/o College, (U. S.).

Otsuki, Chieko, (Pharm.), 206½ Salmon St., (Japan).

Suwahiro, Reiko E., (Pharm.), Route 3, Box 881, (U. S.).

Tsuboi, Miss Akiko, (Pharm.), 434 Oregon St., (U. S.).

Yoshinaga, Miss Fumie, (Pharm.), 1003 W. 11th St.,

Vancouver, Wash., (U. S.).

Yotsuya, Shigeyoshi, (—), c/o College.

Oregon State College (Corvallis) 6

Abe, Paul Y., (So., Pharm.), 214 Monroe, (U. S.).

Kodani, Arthur T., (Sr., Soc. Sci.), 616 S. 17th St., (U. S.).

Komoto, Joe Y., (Fr., Pharm.), 428 S. 13th St., (U. S.).

Maeda, Milton, (Fr., Eng.), 419 S. 13th, (U. S.).

Onishi, Raymond Kazuye, (E.E.), 616 S. 17th St., (Hawaii).

Yasui, Ray, (Fr., Agr.), 428 S. 13th St., (U. S.).

University of Oregon (Eugene) 7

Hiroshige, Raymond, (—), c/o University.

Ito, William, (Soc. Sci.), 1319 E. 15th.

Kajikawa, Hideo, (—), c/o University.

Ogura, Tommy, (—), c/o University.

Sato, Joseph, (—), c/o University.

Shimamura, Charles, (—), c/o University.

Yasui, Minoru, (Law), 704—12th St., Hood River.

Willamette University (Salem) 6

Fukuda, Miss Suzie, (L.A.), Route 9, Box 106, (U. S.).

Nakadate, K., (Jr., Biol.), 434 Union St., (U. S.).

Nakamura, Eiichi, (Pol. Sci.), 1434 Ferry St., (Japan), Waseda U.

Watanabe, Miss Seiko, (Hist.), 15555 B St., (U. S.).

Yada, Tatsuro, (L.A.), Route 9, (U. S.).

Yamagata, H., (L.A.), 1434 Ferry St., (Japan).

PENNSYLVANIA

PENNSYLVANIA

Bryn Mawr College (Bryn Mawr) 1

Nakamura, Miss Shizu, ('35, —), Denbigh Hall,
(Japan), Tsuda C.

Crozer Theological Seminary (Chester) 1

Takasugi, Miss Kazue, (Rel. Ed.), c/o Seminary,
(Japan).

**Divinity School of the Protestant Episcopal
Church (Philadelphia) 1**

Miyaki, Stephen T., (Mid. Theol.), 209 St. Mark's
Square, (Japan).

Jefferson Medical College (Philadelphia) 2

Nishijima, Satoru, (Med.), 939 Spruce St., (Japan).

Suenaga, Howard, (Med.), 1107 Spruce St., (Hawaii).

Pendle Hill (Wallingford) 2

Kurama, Miss Kikue, (Soc. & Rel. Studies), c/o Pendle
Hill, (Japan).

Kusama, Nobuwo, (Soc. & Rel. Studies), c/o Pendle
Hill, (Japan).

Swarthmore College (Swarthmore) 2

Sakami, Warwick, (Fr.), 86 E. Essex Ave., Lans-
downe, (U. S.).

Sakami, Miss Yuri, (Jr., Engl.), 86 E. Essex Ave.,
Lansdowne, (U. S.).

**Westminster Theological Seminary
(Philadelphia) 2**

Matsuo, Takeshi, (Gr., Theol.), 1528 Pine St., (Japan).

Okada, Minoru, (Theol.), The Gladstone Hotel, 11th
& Pine Sts., (Japan).

University of Pennsylvania (Philadelphia) 7

Imamura, Charles Takeo, (Gr., Bus.), 215 S. De Kalb
St., (Japan).

Inouye, Dr. Kiyoshi, (Gr., Med.), 233 S. 41st St.,
(Hawaii).

Kitamura, Saburo, (Jr., Med.), 226 S. 39th St.,
(Japan).

Mayuzumi, Haruo, (—), 4103 Pine St.

Okazaki, Dr. and Mrs. Kyuro, (Gr., Med.), 416 S.
41st St.

Sato, Zen, (Med.), The Woodlands, 39th & Woodland
Ave., (Hawaii).

Tachibana, Takashi Francis, ('35, Med.), 3905 Spruce
St., (Japan), American S. in Japan.

RHODE ISLAND, SOUTH DAKOTA, TENNESSEE,
TEXAS, UTAH, VIRGINIA, WASHINGTON

RHODE ISLAND

Brown University (Providence) 1

Takagi, Hirochi, (Sp., Hist. & Pol. Sci.), 52 Barnes
St.

SOUTH DAKOTA

University of South Dakota (Vermillion) 1

Kuramoto, Mitsuo, (Med.), 105 N. Yale St., (Hawaii).

TENNESSEE

David Lipscomb Junior College (Nashville) 1

Mazawa, Tokuo, (Engl. & Bible), c/o College, (Japan).

Bob Jones College (Cleveland) 1

Tanaka, Jonathan, (Rel. Ed.), c/o College, (South
America).

**Nashville Agricultural Normal Institute
(Madison) 2**

Imai, Joseph, (Agr.), c/o Institute, (Japan).

Mizukami, William Takeshi, (Med. Evang.), c/o In-
stitute, (Japan).

Vanderbilt University (Nashville) 1

Kuribayashi, Tatsuo, (Phil. of Rel. & Soc.), c/o Uni-
versity, (Japan).

TEXAS

Baylor University (Waco) 1

Sakabe, Shigeyoshi, (Arts & Sci.), 1625 S. 10th,
(Japan).

UTAH

Westminster College (Salt Lake City) 2

Yoshimura, Shinichi, (Coll.), 140 W. 2nd So., (Japan).

Yukawa, Mōriyoshi, (—), 247 W. 1st So.

VIRGINIA

Virginia Theological Seminary (Alexandria) 1

Goto, David Makoto, (Theol.), c/o Seminary, (Japan).

WASHINGTON

College of Puget Sound (Tacoma) 13

Fukuyama, John, (L.A.), 726 Fawcett Ave., (U. S.).

Kato, Masesaburo, (L.A.), 1505 Fawcett Ave.,
(Japan).

WASHINGTON—Continued

- Kubo, Giro, (L.A.), 817½ Fawcett Ave., (U. S.).
 Kubo, Michio, (B.A.), Route 1, Box 418, Puyallup,
 (Japan).
 Kurimoto, Miss Toshiko, (Home Econ.), P. O. Box
 919, (U. S.).
 Mayeda, Tom, (B.A.), Route 3, Box 1190, Auburn,
 (U. S.).
 Miyazaki, Tadashi, (Gr., M.A.), Route 2, Box 511,
 Kent, (Japan).
 Miyazaki, Mrs. Takai, (Home Econ.), Route 2, Box
 511, Kent.
 Nakagawa, Tanzo, (Sr., L.A.), 1355 Market St.,
 (Japan), Y.M.C.A.
 Norisada, Tom, (L.A.), Route 2, Box 533, (U. S.).
 Ohmoto, Masao, (B.A.), Route 1, Box 400, Puyallup,
 (U. S.).
 Yamamoto, Miss Katherine, (Home Econ.), Route 2,
 Box 657, (U. S.).
 Yasuda, Taro, (B.A.), P. O. Box 188, Eatonville,
 (Japan).

Pacific Lutheran College (Parkland) 1

- Hasegawa, Shoin, (So., L.A.), 1357½ Market St.,
 Tacoma.

Seattle Pacific College (Seattle) 1

- Oiye, Miss Louise Hatsue, (—), c/o College.

State College of Washington (Pullman) 1

- Tsuji, Suejiro, (Arch. Eng.), 511 Campus, (Japan).

University of Washington (Seattle) 147

- Araki, Toru, (Fr., B.A.), 839 Elmgrove, (U. S.).
 Aritomi, Ikuo, (Gr., Eng.), 1414 Weller, (Japan).
 Chiba, Bain, (So., Pharm.), 514 Main, (U. S.).
 Fujihara, Kazuo, (So., Sci.), 4021 University Way,
 (U. S.).
 Fujii, Howard Thomas, (So., E.E.), 4238—12th N.E.,
 (U. S.).
 Fujii, Takashi, (So, Eng.), 529—11th Ave., (U. S.).
 Fujimoto, Frank, (Jr., Mktg.), 1346—13th So., (Japan).
 Fujishige, Charles Giichi, (Sr., E.E.), 518 Washing-
 ton St., (U. S.), Broadway H. S.
 Fujita, Tetsuo, (So., Mktg.), 4115—15th N.E., (U. S.).
 Fukui, Shoji, (So., Bus. Adm.), 1201 Rainier Ave.
 (U. S.).
 Fukutani, Miss Shizuyo Molly, (Fr., L.A.), 2035
 King, (U. S.).
 Hagihara, George, (Fr., Pharm.), 1510 E. Alder
 (U. S.).
 Hasegawa, George Shigeo, (Fr., L.A.), 416—18th So.,
 (U. S.).
 Hasegawa, Ichiro, (Fr., Chem. Sci.), Route 3, Box
 154, (U. S.).

WASHINGTON—Continued

- Hayashi, Naohisa, (So., Econ.), 4158—38th So., (U. S.).
- Higuchi, Joe, (So., B.A.), 616—11th Ave., (U. S.).
- Higuchi, Miss Yuriko Lillian, (Fr., Pharm.), 616—11th Ave., (U. S.).
- Hirabayashi, Martin Y., (Fr., For. Tr.), 5032—21st N.E., (U. S.).
- Hirade, Yoneo, (Jr., Bus. Adm.), 515—18th So., (U. S.).
- Hirata, Miss Mitsuko, (Jr., Bus. Adm.), 6531—60th N.E., (U. S.).
- Hirata, Miss Yuri Lilly, (Fr., Home Econ.), 6531—60th N.E., (U.S.).
- Hisayasu, Saburo, (So., L.A.), 1403 Elmgrove St., (U. S.).
- Hokari, Samuel Yorchi, (So., L.A.), 2033 Washington St., (U. S.).
- Horiuchi, Miss Chiye, (Fr., Bus. Adm.), 303—23rd No., (U. S.).
- Horiuchi, Masanori, (Fr., Hist.), 303—23rd No., (U. S.).
- Hoshi, Hiroshi Paul, (Fr., E.E.), 307—15th Ave., (U. S.).
- Hoshide, Sekio, (Fr., Pharm.), 203—1st So., (U. S.).
- Hosokawa, William K., (So., Journ.), 1626½ Lane St., (U. S.).
- Imori, Tom Tomoyoshi, (So., Pharm.), 4023 University Way, (U. S.), Olympia H. S.
- Iriye, Tom Tateki, (Sr., Pharm.), 4115—15th Ave., N.E., (Japan).
- Ishio, Paul Y., (Gr., Eng.), 423 Maynard Ave., (U. S.), Franklin H. S.
- Ito, Kenji, (Jr., Law), 4115—15th N.E., (U. S.).
- Iwanaga, Yoshio, (Jr., Arch.), 2207—15th So., (Japan), Lincoln H. S.
- Kajiwara, Miss Mieko, (Fr., Journ.), 1965—26th No., (U. S.).
- Kanaya, Toshiji, (Sr., L.A. & Soc.), 1217 Yesler Way, (Japan).
- Kanazawa, Minoru, (Fr., B.A.), 1642 Weller, (U. S.).
- Kaneko, Shozo, (Fr., Art), 607—11th Ave., (U. S.).
- Kashiwagi, Mitsuo, (So., Econ.), 3508 Genessee, (U. S.).
- Katsuno, Peter, (Fr., B.A.), Kent, (U. S.).
- Kawahara, Hitoshi, (Fr., L.A.), 1716 Jackson, (U. S.).
- Kazama, Donald, (Jr., Pharm.), 1108 E. Cherry, (U. S.).
- Kazama, Miss Ruth, (Fr., Econ.), 1108 E. Cherry, (U. S.):
- Kimura, Shuji, (So., Chem.), 5032—21st N.E., (Japan).
- Kiryama, Miss Yukiye, (So., L.A.), 921 Yesler Way, (Japan).

WASHINGTON—Continued

- Kiyomizu, Shozo, (So., Eng.), 706 Main St., (U. S.).
 Kobayashi, Shin, (So., L.A.), 2205½ 1st Ave., (U. S.).
 Kobayashi, Thomas Takao, (Fr., Econ. & Bus.), 1629A
 King St., (U. S.).
 Koitbashi, Yoshiyuki Russell, (Jr., Pre-Med.), 804 Yes-
 ler Way, (U. S.), Broadway H. S.
 Koito, Chugo, (So., Journ.), 1806½—8th Ave.,
 (Japan).
 Kondo, Miss Mariko Mary, (Fr., Engl.), 1621½ Yes-
 ler Way, (U. S.).
 Koriyama, Miss Hana, (So., Nurs.), 617—6th Ave.,
 (U. S.).
 Kosaka, Roy Minoru, (Fr., L.A.), 2701 E. Madison
 (U. S.).
 Kubushiro, Akira, (So., Econ.), 111 Railroad Ave.,
 So., (U. S.).
 Kumamoto, Yukio, (So., Chem.), 1229 E. Spruce,
 (U. S.).
 Kumasaka, Miss Mayko, (Fr., Bact.), 2124 N. 100th
 St., (U. S.).
 Kuramoto, Tsuyoshi, (So., M.E.), 4115—15th N.E.,
 (U. S.).
 Makino, Miss Tsunechiyo, (So., Pre-Med.), 1005 E.
 Jefferson, (U. S.).
 Masuda, Minoru, (Jr., Pharm.), 506½ Maynard Ave.,
 (U. S.).
 Matsumoto, Hiroo, (Fr., Econ. & Bus.), 1815 Lane
 St., (U. S.).
 Matsushima, Miss Sueko, (Sr., Pharm.), 1722 N. 47th
 St., (U. S.).
 Mimbu, William Yoshiya, (2nd Yr. Law), 4111 Rainier
 Ave., (U. S.).
 Minatoya, Hiroaki, (Fr., Sci.), 4115—15th, N.E.,
 (Japan).
 Miyamoto, Shotaro, (Jr., Soc.), 4023 University Way,
 (U. S.).
 Momoi, Jimmie Mitsuo, (So., E.E.), 761—32nd Ave.,
 (U. S.).
 Monden, Tamao, (3rd Yr., Law), 4115—15th N.E.,
 (Hawaii).
 Mori, Miss Takae Mary, (Jr., Pharm.), 712—6th Ave.
 Morimizu, Miss Hide, (Fr., For. Tr.), Box 306, Sum-
 ner, (U. S.).
 Morimizu, Miss Toshio, (Fr., L.A.), Box 306, Sumner,
 (U. S.).
 Morita, Miss Dorothea Yae, (Sr., Hist.), Lewis Hall,
 (Hawaii).
 Morita, Miss Fumiko, (Sr., Mus.), 208—8th Ave., So.,
 (U. S.).
 Morita, Miss Michiko, (So., Mus.), 208—8th Ave., So.,
 (U. S.).
 Morita, Shigeru, (Fr., B.A.), 208—8th Ave., So.,
 (U. S.).

WASHINGTON—Continued

- Murakami, Richard K., (Fr., B.A.), Long Beach, (U. S.).
- Murakami, Takashi, (Fr., Bot.), P. O. Box 20, Algonia, (U. S.).
- Nagaisha Kenji, (Fr., Eng.), 710 Main St., (U. S.).
- Nakagawa, Yuichi, (Fr., B.A.), 505 Main St., (Japan).
- Nakamura, John Kazuo, (So., Pharm.), 1422 Norman (U. S.).
- Nakamura, Karl K., (Fr., B.A.), 931—25th So., (U. S.).
- Nakamura, Tsuyoshi, (Fr., L.A.), 4115—15th Ave., N.E., (U. S.).
- Nakamura, Victor Sadahito, (So., For. Tr.), 1117 Washington St., (U. S.).
- Nakao, Thomas, (Sr., Pharm.), 602 Cherry St., (Japan).
- Nakata, Miss Katsuko, (Fr., Home Econ.), 222 Terry (U.S.).
- Namba, Miss Josephine Sakae, (For., Hom. Econ.), 2611 Broadway, No., (U. S.).
- Nishimura, Hiromi, (Fr., For.), 619½ 6th So., (U. S.).
- Nishisaka, Noboru, (So., E.E.), 722 Main St., (U. S.).
- Nojiri, George Kazuo, (Fr., Eng), 417 James St., (U. S.).
- Nomura, Richard, (So., Pharm.), 162—15th Ave., (U. S.).
- Nozawa, George Katsumi, (Fr., L.A.), 1228 Main, (U. S.).
- Ogawa, Miss Ethel Fox, (So. Sci.), 510—15th Ave.
- Ohi, George M., Jr., (Jr., E.E.), 716 Yesler Way, (U. S.).
- Okada, Mitsuru, (Fr., For Tr.), 412—7th Ave., (U. S.).
- Okada, Takao Frank, (Fr., B.A.), 1002 E. Spruce, (U. S.).
- Okamura, Miss Mary Shizue, (Fr., L.A.), 1916 Main St., (U. S.).
- Okazaki, Takaaki, (Fr., Econ. & Bus.), 819 Weller, (U. S.).
- Saito, Frank H., (So., Pre-Med.), 4115—15th Ave., (U. S.).
- Sakahara, Toru Roy, (Fr., Pre-Law), 4115—15th Ave., N.E., (U. S.).
- Sakimura, Miss Mary Akiko, (Fr., Journ.), 4521—6th Ave., N.E., (U. S.).
- Saoka, Miss Fumiko, (So., Sci.), 2269 E. Howe, (Japan).
- Sato, Miss. Miyako, (Sr., For. Tr.), Clark Hall, (U. S.).
- Shimanaka, Fred, (So., Pharm.), 1342—14th So., (U. S.).
- Shimomura, Eddie Kazuo, (So., Pharm.), 946—24th So., (U. S.).

WASHINGTON—Continued

- Shinbo, Sherlock Shorokuro, (Fr., Pharm.), 220—10th Ave., (U. S.).
- Shio, Esam Ronald, (Fr., Bus. Adm.), 2026—10th N., (U. S.).
- Suzuki, Fujitsugu, (Sr., C. E.), 1924—12th Ave., So., (Japan).
- Takagi, Harry Ichiro, (So., Bus. Adm.), 4115—15th Ave., N.E., (U. S.).
- Takahashi, William Y., (So., Pre-Med.), 907—9th So., (Japan).
- Takakoshi, Katsumi, (Fr., L.A.), 165—9th Ave., (U. S.).
- Takayoshi, Miss Masako, (Gr., Sci.), Harborview Hall, (U. S.), Garfield H. S.
- Takeda, Miss Mary Mariko, (Fr., Home Econ.), 221—18th Ave., So., (U. S.).
- Takeuchi, Miss Lilly Makiko, (Jr., Bus. Adm.), 318—11th Ave., (U. S.).
- Tamura, Yoshio, (Jr., Sci.), 2023 King, (Japan).
- Tarabe, S. David, (Jr., E.E.), 4115—15th Ave., N.E., (U. S.).
- Tanaka, Miss Miyoka Viola, (So., Pharm.), 123 Maynard Ave., (U. S.).
- Tatsuda, Charlie, (So., For. Tr.), 4115—15th Ave., N.E., (U. S.).
- Tatsumi, Henry S., (Gr.), 107—16th So., (U. S.).
- Tatsuo, Matsui, (So., Eng.), 1214 Howell St., (Japan).
- Terada, George S., (Jr., Mktg.), Route 2, Box 28, Kent, (U. S.).
- Terusaki, Frank Fuzuko, (Fr., Journ.), 2515—24th No., (U. S.).
- Toribara, Frank Yoshio, (So., Arch.), 1757—14th So., (U. S.).
- Toribara, Taft, (Fr., Chem.), 1757—14th So., (U. S.).
- Tsuboi, Toshio, (So., Pharm.), 2207—15th So., (U. S.).
- Tsubota, Miss Masuko, (Fr., Mus.), 1108 E. Spruce, (U. S.).
- Tsuchiya, Henry M., (Jr., Bact.), 5032—21st N.E., (U. S.).
- Tsukuno, Harold Harunobu, (Fr., Bus. Adm.), 113—7th So., (U. S.).
- Tsukuno, Kazuo, (So., Bus. Adm.), 113—7th So., (U. S.).
- Tsukano, Miss Mary, (So., Home Econ.), 113—7th So., (U. S.).
- Tsutakawa, George, (Jr., Art), 3220—19th So., (U. S.).
- Tsuzuki, Reisuke Howard, (Sr., L.A.), 4115—15th Ave., N.E., (Japan), Meiji Gakuin.
- Uyeda, Katsujiro, (Sr., L.A.), 4115—15th N.E., (Japan), Y.M.C.A.
- Uyematsu, Miss Kaley S., (So., Journ.), Clark Hall, (U. S.).

WASHINGTON—Continued, WISCONSIN,
ALASKA

- Uyeminami, F. K., (Gr., E.E.), 4115—15th N.E.,
(U. S.).
Uyetake, Shio, (So., Law), 4115—15th N.E., (U. S.).
Wakamatsu, Norio J., (Jr., Bus. Adm.), 137—1st No.,
(U. S.).
Watanabe, George Tsuyoshi, (Fr., Journ.), 4115—15th
N.E., (U. S.).
Watanabe, Hiroshi Jerry, (So., Econ.), 1013 E. Spruce,
(U. S.).
Yagi, Fumio, (Fr., Eng.), 504 Main St., (U. S.).
Yamada, Miss Yoshiko, (Sr., Bot.), 2622—10th No.,
(U. S.), Garfield H. S.
Yamamoto, Floyd Masayuki, (Fr., Eng.), 4115—15th
N.E., (U. S.).
Yanagimachi, George, (So., Mktg.), 703—18th So.,
(U. S.).
Yasumura, Miss Mary Mariko, (Jr.), 2706—10th No.,
(U. S.).
Yasumura, Miss Michiko, (Fr., L.A.), 2626—10th No.,
(U. S.).
Yayoshi, Masao, (Fr., Eng.), 302—14th So., (U. S.).
Yoda, Rinichi Frank, (Fr., Bus. Adm.), 1118 Sturges
(U. S.).
Yonago, Jack Tadashi, (Jr., M.E.), 4115—15th Ave.,
N.E., (U. S.).
Yorioka, Ukio, (Fr., Eng.), 710 Lane St., (U. S.).
Yorozu, Miss Stella Taeko, (Fr., Home Econ.), 1425
Yesler Way, (U. S.).
Yoshihara, Shuko, (Jr., Pharm.), 4230 University Way,
(U. S.).

Walla Walla College (College Place) 1

Morikone, S., (Theol.), c/o College, (Japan).

Yakima Valley Junior College (Yakima) 1

Munekiyo, Frederick, (Sci.), 306 South 2nd St.,
(U. S.).

WISCONSIN

Marquette University (Milwaukee) 1

Ota, Robert K., (Fr., Med.), 562 N. 17th St., (Hawaii).

ALASKA

**Agricultural College and School of Mines
(College) 2**

Mikami, Miss Alice Sachio, (Bus. Adm.), c/o College,
(U. S.), Anchorage H. S.
Mikami, Harry, (Chem.), c/o College, (U. S.).

INDEX TO ADVERTISERS

	PAGE
Alliance Printing Corp.....	Outside Back Cover
American Express Co.	91
Aoyagi Co.	2
Canadian Pacific	Inside Front Cover
International Houses	4
Japanese American	60
Japanese M. E. Church and Institute.....	62
Japanese Times, The.....	55
Katagiri Brothers	58
Kuwayama & Co.	59
Miyako	57
Nippon Rihatsu-kan	61
Nippon Yusen Kaisha (N.Y.K. Line).....	50
O. S. K. Line.....	53
Santa Fe Rwy.	22
Taiyo	56
Tokyo Tei	59

GEOGRAPHICAL INDEX

	PAGE		PAGE
Alberta (Canada)	23	Nebraska	58
Alaska	72	New Jersey	58
British Columbia	23	New York	59
California	25	North Carolina	63
Colorado	47	Nova Scotia	24
Connecticut	48	Ohio	63
District of Columbia..	48	Oklahoma	63
Idaho	49	Oregon	64
Illinois	49	Pennsylvania	65
Indiana	51	Quebec (Canada)	24
Iowa	52	Rhode Island	66
Kansas	52	South Dakota	66
Kentucky	52	Tennessee	66
Louisiana	53	Texas	66
Maryland	54	Utah	66
Massachusetts	54	Virginia	66
Michigan	55	Washington	66
Minnesota	56	Wisconsin	72
Missouri	56		

INDEX TO INSTITUTIONS

	PAGE		PAGE
A		E	
Alaska Gr. C. & S. of Mines	72	Earlham C.	51
Albany C.	64	F	
Armour Inst. of Tech.	49	Fresno State C.	26
Atlantic Un. C.	54	Fullerton Jr. C.	26
Auburn Theo. Sem.	59	G	
B		George Washington U.	48
Baker U.	52	Glendale Jr. C.	27
Baptist Missionary Training S.	49	Guilford	63
Battle Creek C.	55	H	
Baylor U.	66	Harvard U.	54
Berkeley Baptist Div. S.	25	Hope C.	55
Biblical Seminary of N. Y.	59	I	
Boston U.	54	Indiana U.	51
Bradley Polytech. C.	49	Iowa State C.	52
Brigham Young U.	63	J	
Brown U.	66	Jefferson Med. C.	65
C		Johns Hopkins U.	54
Cal. Inst. of Tech.	25	K	
Chicago Med. S.	49	Kalamazoo C.	55
Chicago Tech. S.	49	Kansas City-Western Dent. C.	52
Church D. S. of the Pacific	25	Kansas State C. of Ag. & App. Sci.	52
Clark U.	54	Knox C.	49
C. of Idaho	49	L	
C. of Med. Evang.	25	La Verne C.	27
C. of Osteopathic Phys. & Surg.	25	Los Angeles Pac. C.	27
C. of the Pacific	26	Loyola U.	49
C. of Puget Sound	66	M	
Colorado School of Mines	47	Marquette U.	72
Columbia U. (N. Y.)	60	Mass. Inst. of Tech.	54
Columbia U. (Port- land)	64	McGill U.	24
Compton Jr. C.	26	Mills C.	27
Cornell U.	61	Modesto Jr. C.	27
Creighton U.	56	Mt. Holyoke C.	54
Crozer U.	65	N	
D		Nashville Norm. Inst.	66
David Lipscomb Jr. C.	66	National C. of Ed.	49
Div. S. of the P. E. Church	65	National U.	48
Drew U.	58	New School for Social Research	62
Duke U.	63	N. Y. Institute of Pho- tography	62
		N. Y. Post-Grad. Med. S.	62

	PAGE
New York U.	62
Northeastern U.	54
North Pacific C. of Oregon	64
Northern Bapt. Theol. Sem.	50
Northwest Nazerne C.	49
Northwestern U.	50
O	
Oberlin C.	63
Ohio Wesleyan U.	63
Oregon State C.	64
Otis Art Inst.	28
P	
Pacific Lutheran C.	67
Pacific Union C.	28
Pasadena C.	28
Pasadena Jr. C.	28
Pine Hill Hall	24
Pomona C.	30
Porterville C.	30
Pratt Inst.	62
Princeton Theo. Sem.	58
Princeton U.	59
Purdue U.	51
R	
Riverside Jr. C.	30
Rochester Athenæum & Med. Inst.	63
S	
Sacramento Jr. C.	30
San Bernardino Jr. C.	32
San Francisco Theol. Sem.	32
San Jose State T. C.	32
Santa Ana Jr. C.	34
Santa Maria Union Jr. C.	34
School of Mines & Metallurgy	56
Seabury-Weston Theol. Sem.	50
Seattle Pacific C.	67
Simpson College	52
Southwestern U.	34
Springfield C.	54
Stanford U.	34
State C. of Washington	67
State U. of Iowa	52
Swarthmore C.	65
Syracuse U.	63
Number of Institutions	150

	PAGE
T	
Training C. of Un. Ch. of Canada	24
Tulane U.	53
The Principia	57
U	
Union Theol. Sem.	63
U. of Alberta	23
U. of B. C.	23
U. of California	34
U. of California at L. A.	42
U. of Chicago	50
U. of Cincinnati	63
U. of Colorado	47
U. of Denver	48
U. of Illinois	51
U. of Kansas	52
U. of Louisville	52
U. of Michigan	55
U. of Minnesota	56
U. of Missouri	57
U. of Oklahoma	63
U. of Oregon	64
U. of Pennsylvania	65
U. of San Francisco	47
U. of South Dakota	66
U. of Southern Calif.	44
U. of Toledo	63
U. of Toronto	24
U. of Virginia	67
U. of Wichita	52
V	
Vanderbilt U.	66
Virginia Theol. Sem.	6
W	
Walla Walla C.	72
Washington U.	57
Wayne U.	55
Wellesley College	54
Wesleyan U.	48
Western State C. of Colorado	48
Westminster C.	66
Westminster Theol. Sem.	54
Westminster Theol. Sem. (Pa.)	65
Whittier C.	47
William Jewel C.	57
Willamette U.	64
Wittenberg C.	63
	150

INDEX TO NAMES

	PAGE		PAGE
A		B	
Abe, Miss Alice.....	30	Baba, Kajiro	30
Abe, George Yoshimi- chi	42	Babamoto, Toshio F....	42
Abe, Miss Mary.....	30	Banno, Edward.....	64
Abe, Paul Y.	64	Bessho, Miss Setsuko	51
Abe, Shogo	27	C	
Abe, Yonekagu	44	Chiba, Bain.....	67
Adachi, George Toshio	42	Chikasue, R. S.....	52
Adachi, Kagumi	44	Chinen, Theodore K... 57	
Aihara, Chitose	32	Chino, Thomas T.....	44
Aisawa, Miss Yoneko..	28	Chogoro, Kanno.....	44
Aiso, Miss Mary S....	42	Chuman, Fujio Frank	42
Aiso, Paul Togo.....	42	Chuman, Yemi	42
Aiura, Kiyo	32	D	
Akagi, Mrs. Yoshi.....	60	Dekuzaku, Miss Ruth..	35
Akamatsu, Alfred Sa- buro	63	Doi, Bert	28
Akimoto, Miss Bertha M.	34	Doi, Miss Yoncko.....	25
Akiyama, Miss Flor- ence	26	Domoto, Miss Yuriko..	35
Akiyama, Miss Helen..	26	E	
Akiyama, Sumi	44	Endow, Edward A.....	35
Amano, Miss Alice....	48	Enomoto, Miss Cecelia	55
Ando, Kaoru	51	Enomoto, William.....	35
Ando, Miss Toshimi... 50		Eto, Miss Alice.....	27
Ando, Yoshitake	44	Eto, Jackson Kazuo....	42
Anraku, Tatsuo	42	Eto, William Hisayuki	42
Anraku, Miss Yuki....	27	F	
Aoki, Miss Alyce.....	30	Fujihara, Kazuo.....	67
Aoki, Miss Anna J....	34	Fujii, Howard Thomas	67
Aoki, Peter S.	34	Fujii, Koichi Kenneth	58
Aoki, Shozo	34	Fujii, Miss Mary S....	35
Aoyagi, Shunryu	44	Fujii, Ryuchi.....	44
Araki, Toru	67	Fujii, Takashi	67
Arase, Tamotsu	26	Fujii, William	30
Arikawa, James Takeo	44	Fujikawa, Fujie	42
Arima, Junichi	23	Fujima, Rev. Ichigu... 44	
Arimoto, Hisao	27	Fujimoto, Frank.....	67
Aritomi, Ikuo	67	Fujimoto, Tadashi.....	34
Ariyama, Kyozo	56	Fujimoto, Miss Shizuko	28
Asai, George Napoleon	61	Fujinaka, George.....	64
Asai, Miss H. N.	61	Fujino, Chester.....	49
Asai, K. W.	61	Fujioka, Miss Alice	
Asai, Miss M. V.	61	Tomiko	42
Asakura, Jim	28	Fujioka, Kaoru	42
Asami, Kikuo	34		
Asami, Taiichi.....	30		
Asmeshima, Miss Fumi	28		
Atsumi, John S.....	55		

	PAGE		PAGE
Fujioka, Miss Michihiko	35	Hamada, Sadae.....	25
Fujioka, Sadamu	42	Hamaishi, Harry Takashi	52
Fujioka, Takashi R.....	35	Hamamoto, David M... ..	49
Fujisaki, Charles K... ..	30	Hamasaki, Henry.....	32
Fujishige, Miss Alice	35	Hamamura, Masami	44
Fujishige, Charles Giichi	67	Hanada, Kichiji.....	44
Fujishiro, Shuichi	26	Hanaoka, Wilfred.....	25
Fujita, Miss Eugenia Yuriko	35	Haoka, Asae	60
Fujita, Miss Kathleen	35	Hara, Ernest Hideo....	44
Fujita, Samuel J.....	35	Hara, George.....	30
Fujita, Tetsuo.....	67	Hara, Masauki	34
Fukasawa, Kiyo Cathalin	42	Hara, Shigeru	35
Fukuda, Frank	35	Harada, Mitsu Harry..	47
Fukuda, Miss Suzie....	64	Haramoto, Miss Toshi	28
Fukui, Frank F.....	35	Harashima, Dr. Susamo.....	54
Fukui, Shoji	67	Haruki, Takeshi.....	44
Fugunaga, Miss Kiku Alice	42	Hasama, Michiye	28
Fukunaga, Yujiro J....	42	Hase, Kiyo	32
Fukuoka, Miss Fumiko	44	Hase, Miyo	32
Fukusato, Jisaku.....	62	Hasegawa, Charles Satori	42
Fukushima, David.....	47	Hasegawa, George Shigeo	67
Fukushima, Paul.....	47	Hasegawa, Henry Hidehiko	42
Fukushima, Miss Shizuyo Molly.....	67	Hasegawa, Ichiro	67
Fukutani, Miss Shizuyo Molly.....	67	Hasegawa, Junji	35
Fukuyama, John.....	66	Hasegawa, Shoin.....	67
Fukuzawa, En-Ichi....	60	Hasegawa, Tatsuo.....	35
Funai, Richard Toshio	51	Hashimoto, Gerald S. ..	44
Furumura, Togo S.....	42	Hashimoto, Masato	35
Furusho, George Ryoji	47	Hashitani, Roy	49
Furuta, Raymond.....	34	Hata, Frank Haruo....	27
Furuta, Miss Toshiko	34	Hata, George	62
Furuta, William J.....	35	Hata, Richard	52
		Hattori, Tadashi.....	27
		Hayashi, Katao.....	44
G		Hayashi, Masao	27
Gima, Richard Shinki	28	Hayashi, Naohisa	68
Ginoza, Yekoh W.....	35	Hayashi, Dr. Rei.....	50
Gomes, Anthony J.....	28	Hayashi, Shotoku M..	44
Goto, David Makoto....	66	Hazama, George	28
Goto, James M.....	44	Heyamoto, Toshiro.....	44
Goto, Komao	44	Hidaka, Tsuguo	55
Goto, Mazuo	35	Hifrima, Thomas T....	44
		Higa, Benjamin N....	28
H		Higashi, Masanori.....	27
Hagihara, George.....	67	Higashi, Shinobu	23
Hagiwara, Hirato	50	Higashi, Yoshimoto ...	23
		Higashida, Wattow....	44

	PAGE
Higashuichi, Kazuo E.	35
Higashiuchi, Yoshio....	32
Higuchi, Francis M.....	35
Higuchi, James	32
Higuchi, Joe	68
Higuchi, Miss Yuriko Lillian	68
Himeda, Eddie	32
Himeno, Masa Hero....	59
Hino, Aiko.....	50
Hirabayashi, Martin Y.	68
Hirabayashi, Toshio.....	32
Hirade, Yoneo.....	68
Hirai, Kaoru	30
Hiraoka, Shunichi	27
Hiraoka, Yoshimi R....	42
Hirashima, Thomas Toma	42
Hirata, Harold Yoshiomi	57
Hirata, Miss Yuri Lilly	68
Hirata, Miss Masako....	32
Hirata, Miss Mitsuko	68
Hirayama, Miss Elsie	32
Hirayama, Masaichi....	35
Hirooka, Miss Miye-ko	54
Hiroshige, Raymond....	64
Hirota, Masahiro, John	42
Hirota, Mitsuzo	64
Hisamoto, Makoto.....	26
Hisayasu, Saburo	68
Hishimoto, Masato.....	35
Hiyama, H. Frank.....	30
Hogoshi, Shinobu	23
Hohri, Miss Salko.....	28
Hohri, Samuel	28
Hokari, Samuel Yorch	68
Homma, Miss Yoshiko	29
Honda, Yasuo	30
Honda, Miss Viola M.	42
Hori, Chikao George..	23
Hori, Masashi	44
Hori, Salko	28
Hori, Samuel	28
Hori, Taichiro	35
Horiuchi, Miss Chiye..	68
Horiuchi, Masanori.....	68
Hoshi, Hiroshi Paul....	68
Hoshide, Sekio.....	68
Hoshino, Denzaburo....	26
Hoshino, Masao.....	35
Hosokawa, William K.	68

I

	PAGE
Ichikawa, George.....	30
Ichio, Miss Miki.....	35
Ichioka, Isutayo N.....	44
Ichisaka, Morio.....	35
Ichishita, George	32
Ichiyasu, Miss Ayana	35
Ida, Paul Kazue.....	34
Idaka, T.	50
Igauye, Noboru	29
Ige, Yuichi.....	52
Iida, Miss Lillian Yuri	36
Iijima, Miss Misaki....	36
Iimura, Eiichi.....	26
Iino, Miss Carol K....	36
Iino, David	59
Iino, Sho	42
Ikeda, Miss Fusae.....	36
Ikeda, Miss Yuri.....	29
Ikida, Miss Noriko....	36
Imada, J. H.....	1
Imagawa, Richard Masayuki	30
Imai, Joseph	66
Imamura, Charles Takeo	65
Imamura, Miss May....	36
Imori, Tom T.....	68
Imoto, Miss Chiduyo....	27
Imoto, Hijoshi	30
Imoto, Sunao	42
Imura, Taizo W.....	36
Inagaki, George.....	30
Inagaki, Taro	63
Inoshita, Day Hiroshi..	42
Inove, Joe Yuzuku....	44
Inouye, Archie Masanori	23
Inouye, Ari	36
Inouye, Charles Ichiro	34
Inouye, John	48
Inouye, Jun	45
Inouye, Kaoru	36
Inouye, Dr. Kiyoshi....	65
Inouye, Lee Masayashi	58
Inouye, Torao.....	42
Inouye, Tsotomu T....	36
Inouye, Roy Yoshinori	48
Inui, Frank Kazuo.....	42
Iriki, Masanori	36
Iriye, Mort	45
Iriye, Tom Tateki.....	68
Ishida, Miss Masako....	33

	PAGE		PAGE
Ishida, Masao	30	Kako, Yukio	45
Ishiguro, Hachiro	56	Kaku, Shoji	30
Ishiguro, Kei	44	Kambara, George	30
Ishihara, Paul	29	Kamei, Toshio	45
Ishii, Charles	34	Kameyama, Yozen	26
Ishii, George	45	Kamikawa, Thomas T.	36
Ishii, Ryoichi	54	Kamiya, Ichiro	31
Ishikawa, Jin	30	Kamiya, Phyllis	32
Ishio, Paul Y.....	68	Kanai, Masasuke	32
Ishizaki, S.....	50	Kanai, Matsukichi	51
Isobe, Taro	54	Kanaya, Toshiji	68
Isokawa, Ichio	36	Kanayawa, Minoru	68
Isomura, Fumio	62	Kanda, Robert T.....	57
Itabashi, Namiji	45	Kanda, Tomoji	26
Itami, Akira.....	42	Kanegai, Masako	43
Itatani, Masayoshi	36	Kaneko, Thomas	
Ito, Miss Elizabeth		Motomi	43
Carol	51	Kaneko, Shozo	68
Ito, Miss Eileen May	51	Kaneko, Yoshio H.....	49
Ito, Isume	29	Kanemaru, Masao	45
Ito, Kenji	68	Kanemitsu, Sunao.....	26
Ito, Masayoshi	49	Kaneo, Kazuma N....	45
Ito, Miss Tatsuko A.	25	Kano, Miss Mary.....	36
Ito, Tomoo.....	36	Kano, Riho	51
Ito, Yoshi	48	Karoyama, Thurston J.	36
Ito, William.....	64	Kasai, Masao	54
Iwamoto, Harry K....	36	Kasai, Yoshio	36
Iwanaga, Miss Polesta	48	Kashihara, Fujio	51
Iwanaga, Yoshio.....	68	Kashiwa, Shiro	55
Iwasaki, Hideo Wm....	23	Kashiwagi, Mitsuo	68
Iwasaki, Miss Tomiko	30	Kasubuchi, Sojiro.....	62
Iwata, Kaoru Frank....	45	Kasuga, Katsuno	51
Iwatate, Ichiro	57	Katahira, Yoichiro.....	29
Iwatsu, Sunao J.....	36	Katayama, Yoshio	32
Iwori, Miss Marilyn....	33	Kato, Joichi George....	23
		Kato, Miss Lorna.....	29
J		Kato, Miss Mary.....	23
Jow, William Minoru	42	Kato, Masesaburo.....	66
		Kato, William	
K		Yoshiharu	31
Kadoiki, Miss Virginia	33	Katow, Masakazu	36
Kadota, Yoshie	43	Katsu, Kanari	34
Kadotani, Kazuo	45	Katsuki, Robert	
Kagawa, Shinso.....	45	Yoshihika	58
Kai, Miss Marie	36	Katsuno, Peter	68
Kaihara, Fred Tard....	48	Katsuyama, Harry M.	49
Kainuma, Richard		Katsuyama, Yasutaru....	59
Toshio	53	Kawabe, Kiyoto.....	28
Kajikawa, Hideo.....	64	Kawachi, Risaku	45
Kajiwara, LeRoy	32	Kawachika, Shinichi....	45
Kajiwara, Miss Mieko	68	Kawahara, Hiroshi.....	36
Kajiwara, Nobuo	36	Kawahara, Hitoshi.....	68
Kako, Miss Helen.....	29	Kawai, Juntaro.....	54
		Kawai, Shigeru	29

	PAGE		PAGE
Kawai, Tadashi	52	Kobayashi, Setsuko	
Kawaichi, George K... 25		Kobayashi, Shin.....	69
Kawaji, Shunpaku.....	45	Kobayashi, Tommy.....	47
Kawakami, Dr. Riiti....	54	Kobayashi, Thomas	
Kawamoto, Miss Joice	31	Takao	69
Kawanishi, Sei		Kochi, Miss Kuni	24
Kogioku	54	Kodama, Miss Edith....	43
Kawaoka, Wallace		Kodama, Kenbun.....	34
Shinobu	53	Kodani, Arthur T.....	64
Kawashima, Hajime....	36	Kodani, Masuo	29
Kawashima, Mabel		Koga, Miss Momoyo....	26
Takako	43	Koike, Yasuha	32
Kayano, Kiyoshi	26	Koitbashi, Yoshiyuki	
Kazama, Donald.....	68	Russell	69
Kazama, Miss Ruth....	68	Koito, Chugo	69
Kazato, Henry H.....	36	Koizumi, Miss Fumiko	
Kido, Koichi	25	Florence	43
Kiino, Hugh M.....	36	Kojima, Miss Iris.....	33
Kikuchi, Yuzuru	52	Kojima, Yutaka.....	48
Kikunaga, Jitsuo Joe... 45		Komai, Khan	43
Kimata, Harold		Komatsu, Ota.....	37
Tamaki	53	Komatsu, Shigego	37
Kimura, Ben	25	Kometani, John T.....	56
Kimura, Miss Frances	37	Komiyana, Takashi ...	23
Kimura, Harold H....	37	Komori, Arinori	29
Kimura, Miss Jeanette	37	Komori, Joe Y.....	64
Kimura, Jiro.....	37	Komure, Seiichi.....	27
Kimura, Minoru	53	Kondo, Benjamin.....	37
Kimura, Rankin.....	33	Kondo, George	37
Kimura, Shuji	68	Kondo, Miss Hisae.....	37
Kimura, Tetsuo	31	Kondo, Miss Mariko	
Kira, Tadashi	28	Mary	69
Kirita, Jimmie	29	Kondo, Tsuneco	23
Kiriyama, Miss Yukiye	68	Kondo, Miss Yuri.....	29
Kishi, Mitsuru	26	Kono, Masami.....	37
Kishimoto, Yoshio	23	Konoye, Fumitaka ...	59
Kitagawa, Kiyoshi.....	56	Korematsu, Hiroshi....	31
Kitagawa, Miss Nobu..	56	Korenaga, Yujiro	23
Kitahato, Seito	26	Koriyama, Miss Hana	69
Kitamura, Kengi	23	Kosaka, Roy Minoru..	69
Kitamura, Saburo.....	65	Koshi, George	48
Kitano, Miss Bessie....	37	Koyama, Isamu	37
Kitazumi, Edward.....	37	Koyama, Miss Jessie... 29	
Kito, Toshio.....	27	Koyama, John	37
Kiyohira, Leo U.....	64	Kuba, Miss Tsuta.....	28
Kiyomizu, Shozo	69	Kubo, Giro	67
Koba, Tamiko	43	Kubo, James	31
Kobayashi, George.....	45	Kubo, Michio	67
Kobayashi, Miss		Kubo, Tojiko	43
Hisako	37	Kubose, Masao	37
Kobayashi, Noboru.....	55	Kubota, Howard H....	51
Kobayashi, Dr.		Kubota, Robert	37
Norman Takashi.....	53	Kubushiro, Akira.....	69
		Kumabe, Noboru Paul	45

	PAGE		PAGE
Kumagai, Naotada.....	63	Mansho, Fred Fumio..	45
Kumagai, Paul Sakae .	23	Marumoto, Kenji	43
Kumai, George Kiyoshi	43	Maruyama, Henry	
Kumai, Lawrence.....	25	Hitoshi	43
Kumamoto, Yukio.....	69	Maruyama, Kunio	48
Kumasaka, Miss		Maruyama, Paul	48
Mayko	69	Masuda, James	28
Kumura, Toshio	64	Masuda, Minoru	69
Kuni, Miss Kochi	24	Masuda, Peter Fumio..	23
Kunihiro, Matsuo.....	29	Masuda, Tatsuuro	37
Kunihiro, Mitsuo.....	29	Masuhara, Robert T....	55
Kunihiro, Shizuo.....	29	Masukawa, Shoso	28
Kunugi, Miss Yoshiko .	49	Masuoka, Masaru A...	45
Kurahaya, Miss Pearl	37	Matsu, Shoji	60
Kurama, Miss Kikue....	65	Matsuda, Miss	
Kuramoto, Kenji.....	43	Chiyeko	26
Kuramoto, Mitsuo.....	66	Matsuda, Morita	57
Kuramoto, Sam	29	Matsuda, M.	60
Kuramoto, Tsuyoshi ...	69	Matsukane, Harry	
Kurata, Miss Shizue....	28	Hideo	34
Kuribayashi, Tatsuo....	66	Matsukata, Tane	57
Kurihara, Hisayuki ...	25	Matsukata, Naka	57
Kurihara, Kenneth.....	63	Matsui, Yeiko	45
Kurima, Wilbert	31	Matsumoto, Miss	
Kurimoto, Miss		Alma K.	43
Toshiko	67	Matsumoto, George ...	29
Kuriya, Hiroji	52	Matsumoto, Hiroo	69
Kuroda, Andrew		Matsumoto, Miss	
Yoshinobu	59	Rose F.	37
Kurokawa, Kujoshi ...	29	Matsumoto, Shirowo ..	52
Kurokawa, Yozo.....	29	Matsumoto, Tsuyoshi ..	63
Kusaka, Shuichi	23	Matsumura, Philip	33
Kusama, Nobuwo.....	65	Matsuo, Kehei	45
Kusayanagi, Masoko....	45	Matsuo, Takeshi	65
Kushi, Edward J.....	25	Matsuoka, Miss	
Kushida, Tatsuo.....	37	Bessie	37
Kusunoki, Clarence J.	57	Matsuoka, Miss Fuku..	63
Kusunoki, Miss		Matsushima, Miss	
Yasuko	25	Sueko	69
Kuwata, Ken	45	Matsushima, Sumi	60
Kyoji, Tsutsumi	54	Matsushita, Kai	27
Kyogoku, Miss Marii ..	37	Matsuura, Arthur	37
Kyogoku, Miss Yuri ...	37	Matsuura, Perry S....	37
		Matsuyeda, William	
M		H.	37
Maeda, Milton	64	Matsuzawa, Dr.	
Maeda, Miss Shigecko .	27	Daikichi	50
Maeyama, Chiyo	51	Mayeda, Fred	31
Maki, Hideshi	27	Mayeda, Tom	67
Makimoto, Midori	31	Mayewaki, Ben	37
Makino, Miss		Mayuzumi, Haruo	65
Tsunechiyo	69	Mazawa, Tuko	66
Makino, Y. Tom	45	Migita, Nobuhiko	38

PAGE	PAGE		
Miho, Katsuro	48	Miyoshi, Miss Annie	
Mikami, Miss Alice		Y.	38
Sachio	72	Mizuna, George R.....	38
Mikami, Harry	72	Mizuno, Miss Yuriko	
Mikami, Koshi	26	Lily	23
Mikami, Miss		Momoi, Jimmie	
Tsuyako	30	Mitsuo	69
Miki, Alvin Riichi.....	64	Monden, Tamao	69
Mikimoto, Yoshio	54	Mori, Akira	26
Mikuriya, Miss		Mori, Bunjiro	24
Chiyeko	29	Mori, Miss Jeanne	49
Mikuriya, Kay	29	Mori, Miss Mary Y.....	38
Mimaki, Richard		Mori, Nasae	38
Hidekatsu	43	Mori, Miss Takae	
Mimbu, William		Mary	69
Yoshiya	69	Mori, Yoshihira	43
Minami, William	38	Morifuji, Harry H.....	38
Minatoya, Hiroaki	69	Morihara, Edward T. ..	45
Mineta, Miss Aya	33	Morikawa, Jitsuo	43
Mineta, Etsu	33	Morikawa, Kiyoshi	59
Misumi, Juro	38	Morikawa, K.	60
Mitani, Masatane	60	Morikane, S.	72
Miuma, Shinichi	31	Morimitsu, Arthur	38
Miura, Miss Sada	60	Morimizu, Miss Hide..	69
Miura, Shigeru	52	Morimizu, Miss Toshio	69
Miura, Tadashi Tod....	31	Morimura, Yoshiko	60
Miura, Wataru	38	Morino, Masayoshi' ...	38
Miura, Miss Yayoi		Morita, Miss Dorothea	
Lilly	31	Yae	69
Miwa, Miss Edna	31	Morita, Miss Fumiko..	69
Miyagi, Seiichi	28	Morita, Miss Michiko..	69
Miyahara, Hoshi	31	Morita, Shigeru	69
Miyakawa, Miss Kikuko		Morita, Yoshio	28
Kay	27	Moriyama,	48
Miyakawa, Takeo	62	Morooka, John K.	45
Miyake, Shegetto Rene	26	Mukaibo, Nagahide	54
Miyaki, Stephen T.....	65	Munekiyo, Frederick....	72
Miyaki, Yoshifumi	51	Murakami, Kiyoshi	43
Miyaki, Yoshifumi	57	Murakami, Richard K.	70
Miyamoto, Mitsuo	53	Murakami, Takashi	70
Miyamoto, Shotaro	69	Muramoto, Hideo	38
Miyamoto, Takahisa	33	Murao, Miss Barbara	
Miyamoto, Yositaka ..	33	Haruko	43
Miyana, Miss Shizue....	60	Murata, Yoshinori	38
Miyao, Herbert		Murayama, Miss	
Kokuo	31	Etsuko	38
Miyashiro, Ronald	54	Murayama, Henry	
Miyazaki, Rene Akira	60	Hiroshi	43
Miyazaki, Tadashi	67	Murayama, Makio	38
Miyazaki, Mrs. Takai	67		
Miyazaki, Yuzo	60		
Miyazawa, Kiko	54		

	PAGE		PAGE
N			
Nagahama, John		Nakano, Shimpei	24
Harukichi	43	Nakao, Thomas	70
Nagai, Ichio	27	Nakashiki, Toshio	33
Nagai, Kimie	45	Nakashima, Ritsu	39
Nagai, Sunao	58	Nakata, Miss Katsuko	70
Nagaisha, Kenji	70	Nakatani, Miss Kazuko	26
Naganuma, Michiko	43	Nakayama, George Isao	49
Naganuma, Michiko	45	Nakayama, Shintaro ..	26
Nagao, Chitosey	45	Nakayama, Takao	31
Nagata, Wallace	25	Nakayama, Miss Yoshi	54
Nagatoshi, Miss Mary	38	Namba, Miss Josephine	
Naitu, Miss Lois Aiko	45	Sakae	70
Najima, Haruo	38	Nao, Miss Tamaki	34
Naka, Harry	38	Naruse, Henry	24
Nakabayashi, Kazuo ..	38	Nashiwa, James	
Nakadate, K.	64	Kazuya	28
Nakagaki, Hiromi	38	Natsui, Miss Dorothy	
Nakagawa, Miss		S.	49
Florence	38	Negi, Miss Takako	
Nakagawa, Tanzo	67	Mary	39
Nakagawa, Yuichi	70	Negishi, George R.....	39
Nakahara, Miss Anna	38	Negoro, Kaiui	29
Nakahira, Shizue	32	Nikaido, Susumu	29
Nakaji, Yosho	46	Nishi, Charles Teishi..	31
Nakajo, Korioka	25	Nishibayashi, Shunji ..	43
Nakamoto, Tatsuo	38	Nishida, Tom T.	46
Nakamura, Eiichi	64	Nishigawa, Toru	53
Nakamura, Frank	38	Nishihara, Miss Ida....	33
Nakamura, George N.	43	Nishijima, Satoru	65
Nakamura, Hiomi	34	Nishikawa, Noboru	43
Nakamura, Hiroshi	38	Nishimoto, Ken-Ichi ..	39
Nakamura, Hirotaro....	54	Nishimura, Benjamin..	30
Nakamura, Isamu	25	Nishimura, Hiromi	70
Nakamura, John Kazuo	70	Nishimura, Luther	33
Nakamura, Karl K....	70	Nishimura, Shinze	39
Nakamura, Katsumi	38	Nishimura, Miss	
Nakamura, F. I.	51	Shizuka	31
Nakamura, Shigeo	31	Nishio, Fred	26
Nakamura, Miss Shizu	65	Nishio, Mariko	64
Nakamura, Toshio	31	Nishioka, Bill	49
Nakamura, Tsuyoshi ..	70	Nishisaka, Noboru	70
Nakamura, Victor		Nishizu, Miss Ruth....	26
Sadabito	70	Nito, Ronald	27
Nakamura, Yoshio I..	46	Nitta, Henry	56
Nakanishi, George	26	Nitta, Shigeo	39
Nakano, Miss Edith	33	Niwasi, Miss Sadako..	24
Nakano, Haruo	23	Noda, Lafayette	39
Nakano, Kenneth Khan	43	Nodera, Isamu	46
Nakano, Masa G.	38	Nogami, Kiyomitsu	39
Nakano, Shigeo	31	Noguchi, David	31
		Noguchi, Miss Suzan	
		Lillian	48

	PAGE		PAGE
Nojima, Noble M.	25	Oi, Tetsuo	34
Nojiri, George Kazuo	70	Oiye, Miss Louise	
Nomura, Charles		Hatsue	67
Mitsuo	29	Oka, M.	54
Nomura, Masashi	39	Okada, Hiroshi	24
Nomura, Paul	52	Okada, Minoru	65
Nomura, Richard M... ..	70	Okada, Mitsuru	70
Nomura, Sho	29	Okada, Takao Frank ..	70
Norisada, Tom	67	Okagaki, I. Henry	34
Nosaki, Tom Toshio....	28	Okamoto, Miss Ada M. .	39
Nowaki, Kenneth A....	46	Okamoto, Miss June ...	33
Nozaki, Kenzie	43	Okamoto, Kaoru	31
Nozaki, Masao	46	Okamoto, Susumu	33
Nozawa, George		Okamoto, Yokio	33
Katsumi	70	Okamura, Hachiro ...	24
Nozawa, Tomoye	39	Okamura, Miss Mary	
		Shizue	70
O		Okawa, Tokico	39
Obata, Kimio G.	39	Okazaki, John Daisaku	31
Obata, Roger	24	Okazaki, Dr. and Mrs.	
Obatake, Tanemi	25	Kyuro	65
Ochiai, Augustine		Okazaki, Miss Mari ...	39
Yoshitsugu	50	Okazaki, Takaaki	70
Ochiai, Tadeshi	30	Oki, John Kenkichi ...	31
Oda, Ben H.	31	Oki, Thomas Soichiro	34
Oda, Tadayuki	49	Okimoto, Richard	29
Oda, Taiichi	27	Okubo, Miss Mine ...	39
Oda, Tsukasa	54	Okuda, Hiroshi	24
Ogara, Leonard	29	Okusako, Hideo	31
Ogata, E. Osamu	27	Omori, Nobu	32
Ogata, Dr. Tomio.....	51	Omori, Miss Tomoyuki	39
Ogata, Miss Yoshiye..	33	Onaka, Takeji	46
Ogawa, Miss Ethel		Onishi, Raymond	
Fox	70	Kazuye	64
Ogawa, Miss Futami..	31	Ono, Tatsuo	60
Ogawa, Harry H.	34	Onodera, Kenji	51
Ogawa, Masaru	43	Osaki, George	46
Ogawa, Robert		Oshima, Fred Y.	39
Nobuijoshi	57	Oshita, Sakaye	31
Ogawa, Seido	39	Oshito, Hideo	28
Ogura, Joseph H.	39	Osumi, Paul S.	46
Ogura, Miss Sakiko ..	29	Ota, James H.	39
Ogura, Tommy	64	Ota, Robert K.	72
Ogura, Miss Yumi ...	29	Ota, Tetsuo F.	46
Ohara, George Yoshio	55	Ota, Tosuke	46
Ohashi, Miss Alice ...	39	Otake, Larry Takeo ..	29
Ohashi, Theodore	39	Otake, Masaru	63
Ohashi, George Yoshio	25	Otani, Genroku	27
Ohi, George, Jr.....	70	Otani, William	46
Ohmoto, Masao	67	Otsuka, Masashi	51
Ohno, William	55	Otsuki, Chieko	64
Ohtani, Masato	52	Ozaki, Miss Elsie T. .	46
		Ozamoto, Isamu	48

	PAGE		PAGE
Ozawa, Hayata	29	Sato, Miss Miyaco	63
Ozawa, Hayato Harris	28	Sato, Zen	65
Ozawa, Roy	33	Satow, Miss Eureka ..	31
		Sawahata, Alfred	30
S		Seiki, Miss Anna	29
Sacon, Yoshi-Shige		Senzaki, Kazuyoshi ...	43
Herman	58	Serisawa, Koko	46
Sagawa, Miss Michi ...	39	Sese, Miss Shigeiko ...	49
Sagayama, Yori	27	Sesoko, Miss Harriet	
Saito, Frank H.	70	Kimiko	28
Saito, Hiroshi	39	Seto, Masaharu	56
Saito, Morris M.	40	Setsuko, Kobayashi ...	63
Saito, Miss Taiko		Shibata, George	30
Margaret	40	Shibuya, Madoka	33
Saito, Miss Yaeko		Shiga, Kohei	51
Anne	40	Shigekawa, Sakaye	46
Sakabe, Shigeyoshi ...	66	Shigekawa, Toy Toru..	43
Sakaguchi, Shimpei ...	48	Shigezumi, George	40
Sakahara, Toru Roy ..	70	Shima, Takayoshi A...	43
Sakai, Miss Pansy		Shima, Ruidge	40
Tamiko	31	Shimada, Masao	34
Sakai, Mitsuo	40	Shimamoto, Miss	
Sakai, Toru	52	Haruko	29
Sakakibara, Raymond		Shimamoto, Miss Tae..	52
Reiichi	51	Shimamura, Charles ...	64
Sakamaki, Shunzo	61	Shimanaka, Fred	70
Sakami, Warwick ...	65	Shimazu, Miss Mary ..	29
Sakami, Miss Yuri ...	65	Shimisaki, Tom	30
Sakamoto, David	33	Shimizu, Kazu	46
Sakamoto, Makoto ...	54	Shimizu, Kiyoshi	31
Sakamoto, Micheo ...	33	Shimizu, Miss Masako	
Sakamoto, Wallace ...	56	Martha	46
Sakanari, George	40	Shimizu, Seihei	47
Sakata, Miss Alice		Shimizu, Shiro	24
Kimiko	31	Shimoda, Robert	
Sakimura, Miss Mary		Kazumi	57
Akiko	70	Shimokubo, Paul	40
Sameshima, Kenja	29	Shimomura, Eddie	
Sanmiya, Mamoru	32	Kazuo	70
Saoka, Miss Fumiko ...	70	Shimomura, Shigeru ..	26
Sasaki, Everett Shigeo	31	Shimomura, Takaji ...	26
Sasaki, George	43	Shimotori, George ...	40
Sasaki, Joe D.	40	Shimotori, Miss	
Sasaki, Micheo	33	Nobuko	40
Sasaki, Yasuo	63	Shinbo, Sherlock	
Sato, Miss Fumiko	29	Shorokuro	71
Sato, Hiroshi	46	Shingu, Shuzu L.	46
Sato, Joseph	64	Shinno, George M.	66
Sato, Miss Kiyo	33	Shinoda, Paul	40
Sato, Miss Kiyoko	29	Shinoda, Shiho	46
Sato, Masa	40	Shinohara, Kenichi ...	25
Sato, Miss Masako.....	63	Shinowara, George ...	63
		Shio, Esam Ronald ...	71
		Shiogi, Miss Mary ...	64

PAGE	PAGE
Shiojima, Hifumi 28	Tadokoro, Shigeru 51
Shiota, Manzo 40	Tafukuji, Mamoru 46
Shioto, Fumi 32	Tagashira, Miss
Shirai, Masahi 61	Hamako 29
Shirai, Noboru 55	Tagawa, Miss Takae.... 58
Shoyama, Kunito	Taira, Harry Y. 28
Thomas 24	Tajima, Miss Sophie.... 29
Sonoda, George 46	Tajima, Yuyi 29
Sonoda, Miss Margaret 40	Takagi, Harry Ichiro 71
Sonoda, Miss Mary .. 40	Takagi, Hiroichi 66
Suda, George M. 40	Takagi, Noboro G. 40
Suda, Walter 29	Takahasa, Henry
Suenaga, Henry 29	Hirayuki 30
Suenaga, Howard' 65	Takahashi, Alden
Sugahara, Miss Jean	Wataru 43
Fuji 43	Takahashi, Ernest 40
Sugahara, Roku 43	Takahashi, Miss Grace 41
Sugahiro, Reiko E.... 64	Takahashi, Ichiro J.... 54
Sugawara, Peter 31	Takahashi, Joseph
Sugi, Tetsu 43	Govo 31
Sugihara, Hideko 43	Takahashi, Kyojito 46
Sugimoto, Noboru 60	Takahashi, Seytsu S. 46
Sugimoto, Tashio 28	Takahashi, William ... 29
Sugiyama, Henry I... 40	Takahashi, William Y. 71
Sugiyama, Hiroshi 40	Takahashi, Yukio 24
Sugiyama, Tetsuo 40	Takaichi, Miss Martha 33
Sumeragi, Atsuyuki ... 29	Takaki, Miss Chiyoko 32
Sumida, Perry 25	Takaki, Sada 57
Sumida, Rigenda Togo 24	Takakoshi, Katsumi ... 71
Suyehara, Jimmie	Takamine, Tol 48
Shigeo 43	Takanaga, Robert
Suyehira, Henry 49	Toshiwo 58
Suyemoto, Miss Toyo 31	Takao, Susumu S. 40
Suzukawa, Isami 43	Takase, Mr. and Mrs. 61
Suzuki, Miss Florence	Takasugi, Miss Kazue 65
S. 43	Takasugi, Miss
Suzuki, Fujitsugu ... 71	Tomoye 29
Suzuki, John Ichiro ... 28	Takata, Hiroshi 27
Suzuki, Hajime 24	Takayama, Hideo 29
Suzuki, Harvey K. 40	Takayama, Shigeo 29
Suzuki, Hiroshi 43	Takayoshi, Miss
Suzuki, Kazuko 43	Masako 71
Suzuki, Kazumi 61	Takeda, Charles 30
Suzuki, Mitsuo Paul... 58	Takeda, Hiroshi 43
Suzuki, Richard C. ... 40	Takeda, Kaichi 58
Suzuki, Tsutomu Tom 27	Takeda, Miss Mary
	Mariko 71
	Takehara, Miss Helen
	Kiyoko 52
	Takei, Susumu 40
	Takei, Tatsuto 40
	Takemoto, Miss Fumie 41
	Takemoto, Haruta 49
	Takenaka, Kameichi... 57
T	
Tachibana, Takashi	
Francis 65	
Tabata, I. 52	
Tada, Donald K. 46	

PAGE	PAGE		
Takeo, Roy M.	46	Terashima, Muneyori..	59
Takehige, John	29	Terusaki, Frank	
Taketa, Robert	41	Fuzuko	71
Taketa, Ellsworth		Teshima, John	30
Hiroshi	46	Togashi, Miss Sada ...	27
Takeuchi, Miss Lilly		Toguri, Iva Ikiko	43
Makiko	71	Tokushige, Hiroo	47
Takeuchi, Miss Mary..	29	Tokuzawa, Ryutan ...	34
Takeuchi Frank Sei ...	46	Tom, Richard	47
Takeuchi, James Naoji	31	Tomita, Miss Yone	
Takeuchi, Paul	48	Ann	48
Takiguchi, Seiko	32	Tomoguchi, George	
Takii, Arthur	46	Yoshikatsu	53
Takimoto, Albert		Tomoyasu, Miss Kimi	30
Shinichi	24	Tonegawa, Ichiro	32
Takita, Miss Yoneko...	27	Toribara, Frank Yoshio	71
Tamato, Miss Fudeko	27	Toribara, Taft	71
Tamura, Joseph	63	Toriumi, Howard	
Tamura, Kosaku	41	Noboru	31
Tamura, Tahei	46	Toriumi, Kaoru D. ...	41
Tamura, Takatoshi	46	Toshujuki, John Y. ...	47
Tamura, Yoshio	71	Toyama, Henry Y. ...	47
Tanabe, S. David	71	Tsuboi, Miss Akiko ...	64
Tanabe, Eiji	43	Tsuboi Toshio	71
Tanabe, Miss Emi ...	41	Tsubota, George	25
Tanabe, Miss Hana ...	57	Tsubota, Miss Masuko	71
Tanaka, Ayako	43	Tsuchiga, Takashi	41
Tanaka, Miss Emily...	28	Tsuchiya, Eichira	27
Tanaka, Frank W. ...	62	Tsuchiya, Henry M. 71	
Tanaka, Fuji-Kazu ...	24	Tsuchiya, Kurao	
Tanaka, George	41	Harold	50
Tanaka, Miss Hiloko	41	Tsuchiyama, Hisako ...	43
Tanaka, Jonathan	66	Tsuda, Robert Roku...	32
Tanaka, Manabu	30	Tsuda, Yoshio	52
Tanaka, Miss Miyoka		Tsuji, Suejiro	67
Viola	71	Tsukada, Hideo	54
Tanaka, Roy K.	56	Tsukamoto, Alfred	
Tanaka, Togo	43	Iwao	32
Tanaká, Miss Yoshiko	41	Tsukamoto, Shigeo ...	47
Tanase, Miss Florence		Tsukano, Miss Mary 71	
H.	46	Tsukuno, Harold	
Tani, Henry Nobuo ...	34	Harunobu	71
Taniguchi, Tadao	41	Tsukuno, Kazuo	71
Tann, Miss Yoshiko...	41	Tsumura, Nobuzane ...	48
Tashiro, Haru	41	Tsuneishi, Hughes	30
Tasumoto, George	46	Tsunekawa, George	
Tasuno, Miss Yaeko...	28	Hirokazu	43
Tatsuda, Charlie	71	Tsuru, Shigeto	54
Tatsuguchi, Nobuo		Tsurumoto, Hajime ...	41
Paul	25	Tsutakawa, George ...	71
Tatsumi, Henry S. ...	71	Tsuzuki, Reisuke	
Tatsuo, Matsui	71	Howard	71
Terada, George S. ...	71		

	PAGE
U	
Uba, Katsumi	47
Uchida, Miss Setsuko	30
Uchimura, Miss	
Yuriko	49
Uchiyama, Miss Emily	30
Uemura, Miss Lillian	48
Ugai, Fred	58
Umemoto, Hart Haruto	47
Unoki, Kazuo Karl....	43
Uratsu, Hiroshi	41
Uriu, Masaye	33
Ushihara, Tom T.	41
Ushijima, Tatto Henry	43
Ushiro, Arthur K.	33
Ushiro, California	33
Utsumi, Toyoji	41
Utsunomiya, Miss	
Kiyoko	41
Uyechi, Tatsu J.	41
Uyeda, Katsujiro	71
Uyeda, Stanley T.	49
Uyematsu, Miss Kaley	
S.	71
Uyematsu, Miss	
Martha	49
Uyeminami, F. K.	72
Uyeno, Naozo	51
Uyenovanna, Hidekzu	56
Uyetake, Shio	72

W

Wada, Miss Dorothy	63
Wakamatsu, Miss Eiko	
Mary	43
Wakamatsu, Miss	
Frances	43
Wakamatsu, Norio J.	72
Wakimoto, Toshio	44
Wakiyi, Miss Takeko....	30
Wakukawa, Katsushiro	47
Washimoto, Daniel K.	24
Watanabe, Miss Fuziko	27
Watanabe, George	
Tsuyoshi	72
Watanabe, Henry	
Ichiro	44
Watanabe, Hiroshi	
Jerry	72
Watanabe, Hisako	47
Watanabe, Kenichi	25
Watanabe, Michiro	48

	PAGE
Watanabe, Miss Ruth	
T.	47
Watanabe, S.	47
Watanabe, Miss Seiko	64
Watanabe, Tetsui	51
Watanabe, Toshihisa..	51
Watanabe, Yisamu	51
Watanabe, Yoshio	47

Y

Yabuki, Masao	41
Yada, Tatsuro	64
Yagi, Fumio	72
Yamachika, Fumiye....	26
Yamada, George Y....	41
Yamada, Herman	
Henry	61
Yamada, Kitao	30
Yamada, Masao	41
Yamada, Tadayoshi	61
Yamada, Yaju	26
Yamada, Miss Yoshiko	72
Yamagata, H.	64
Yamagata, Howard	
Yasuo	32
Yamagata, Miss Mary	
K.	41
Yamaguchi, Mitsuga....	44
Yamaguchi, Ralph	
Tadashi	48
Yamakawa, Masami	33
Yamakawa, Utaka	33
Yamamoto, Fred J....	49
Yamamoto, Miss Kath- erine	67
Yamamoto, Miss Kikuo	41
Yamamoto, Louis	
Shigeto	32
Yamamoto, Masao	41
Yamamoto, Floyd	
Masayuki	72
Yamamoto, Ray	34
Yamamoto, Saburo	61
Yamamoto, Shinji	41
Yamamoto, Takoshi....	54
Yamamoto, Victor	34
Yamamura, Harold Y.	42
Yamaoka, Nobuichi	23
Yamasaki, Fred S.	32
Yamasaki, Hisato	42
Yamasaki, Kimi	47

	PAGE		PAGE
Yamasaki, Tsugio	26	Yatabe, Eiji	24
Yamashiro, Masami	47	Yatabe, Miss Minoe	
Yamashiro, Zengei		Grace	30
Yoshio	52	Yatabe, Motoko	42
Yamashita, Dr. Takeo	62	Yayoshi, Masao	72
Yamauchi, Paul	42	Yemoto, Miss Koko.....	26
Yamawaki, Chizuko ...	61	Yemoto, Miss Sadayo	26
Yamayata, Susamu	47	Yoda, Rinichi Frank....	72
Yamazaki, John Henry	44	Yokochi, C.	51
Yamazaki, Matsuo	28	Yonaga, Jack Tadashi	72
Yamazaki, Tomomasa..	42	Yoneda, Kiroataka	48
Yamazuchi, Ernest	47	Yonemoto, Fred	33
Yamota, Miss Juna		Yorioka, Ukio	72
Ruth	27	Yorozu, Miss Stella	
Yanaga, Chitoshi	42	Taeko	72
Yanaga, Miss Clara ...	42	Yoshida, Kiyoko	24
Yanagawa, Miss Kimi	27	Yoshida, Ryukichi	63
Yanagida, H.	51	Yoshihara, Shuko	72
Yanagimachi, George..	72	Yoshihashi, Takehiko..	44
Yanagisawa, Kazuo	42	Yoshikawa, George	58
Yanase, Stanley H.	47	Yoshikawa, Tsuneo	32
Yasuda, Hiroshi	53	Yoshimaru, Giroku	61
Yasuda, Taro	53	Yoshimura, Nobu	32
Yasuda, Taro	67	Yoshimura, Shinichi....	66
Yasui, Minoru	64	Yoshinaga, Miss Fumie	64
Yasui, Ray	64	Yoshioka, Ben T.	42
Yasumi, Hideo	44	Yositizumi, Minoru ...	61
Yasumori, M.	61	Yuasa, Hachiro	42
Yasumura, Miss Mary		Yuba, Arthur T.	47
Mariko	72	Yukawa, Moriyoshi ...	66
Yasumura, Miss			
Michiko	72	Z	
Yasunaga, Miss		Zuckeran, Warren	
Masayo	34	Shigegoru	26
Yata, Tatsuo Paul	44		

SUMMARY

(Fall Registration, 1934)

United States and Hawaii

<i>Men Students</i>	<i>Women Students</i>	<i>Total</i>
1,226	414	1,640

MEMORANDUM

MEMORANDUM

MEMORANDUM

MEMORANDUM

MEMORANDUM

Solving Your Travel Problems

ARE YOU planning a week-end trip, a short tour or cruise, or perhaps a few weeks away from school during the Holiday or Summer recess? You will probably have many problems to solve—where to go—what to see—how much to spend.

The nearest office of the American Express Company is the immediate answer to all of your questions. There you can

Arrange a suitable itinerary;

Secure railroad and steamship accommodations;

Make all airplane, pullman or hotel reservations;

Insure your baggage;

Safeguard your travel funds by purchasing American Express Travelers' Cheques.

Unbiased information regarding any phase of your travel problem will be cheerfully furnished.

Call, telephone or write to

AMERICAN EXPRESS COMPANY

Head Office:

65 BROADWAY NEW YORK, N. Y.

Offices in Principal Cities in the U. S.

Office in Yokohama, Japan

7 NIHON ODORI, NAKAKU

Yearly Calendar

1935	SUN.	MON.	TUE.	WED.	THU.	FRI.	SAT.	1935	SUN.	MON.	TUE.	WED.	THU.	FRI.	SAT.	
JAN	1	2	3	4	5		JUL	1	2	3	4	5	6	
	6	7	8	9	10	11	12		7	8	9	10	11	12	13	
	13	14	15	16	17	18	19		14	15	16	17	18	19	20	
	20	21	22	23	24	25	26		21	22	23	24	25	26	27	
	27	28	29	30	31			28	29	30	31			
FEB					1	2	AUG					1	2	3
	3	4	5	6	7	8	9		4	5	6	7	8	9	10	
	10	11	12	13	14	15	16		11	12	13	14	15	16	17	
	17	18	19	20	21	22	23		18	19	20	21	22	23	24	
	24	25	26	27	28			25	26	27	28	29	30	31	
MAR					1	2	SEP	1	2	3	4	5	6	7	
	3	4	5	6	7	8	9		8	9	10	11	12	13	14	
	10	11	12	13	14	15	16		15	16	17	18	19	20	21	
	17	18	19	20	21	22	23		22	23	24	25	26	27	28	
	24	25	26	27	28	29	30		29	30					
	31														
APR	1	2	3	4	5	6	OCT	1	2	3	4	5		
	7	8	9	10	11	12	13		6	7	8	9	10	11	12	
	14	15	16	17	18	19	20		13	14	15	16	17	18	19	
	21	22	23	24	25	26	27		20	21	22	23	24	25	26	
	28	29	30					27	28	29	30	31		
MAY					1	2	NOV					1	2	
	5	6	7	8	9	10	11		3	4	5	6	7	8	9	
	12	13	14	15	16	17	18		10	11	12	13	14	15	16	
	19	20	21	22	23	24	25		17	18	19	20	21	22	23	
	26	27	28	29	30	31		24	25	26	27	28	29	30	
															
JUN	2	3	4	5	6	7	8	DEC	1	2	3	4	5	6	7	
	9	10	11	12	13	14	15		8	9	10	11	12	13	14	
	16	17	18	19	20	21	22		15	16	17	18	19	20	21	
	23	24	25	26	27	28	29		22	23	24	25	26	27	28	
	30							29	30	31				

The
ALLIANCE
PRINTING CORP.

has printed this directory. It is one of the many jobs we have done for The Japanese Students' Christian Association in North America. They have been well satisfied with our service and prices. Ask them.

Your printing requirements can be handled by us in a manner that will be satisfactory to you as well. Try us. We have been in the business for 30 years. Our address is

110-114 WEST 32ND STREET
NEW YORK, N. Y.

Phone Pennsylvania 6-2443